

ΙΜΡΑΓΙΑ  
MILANO



<b>Reinventing the Classics</b>	
Our vision	3
Tailor Made in Italy	4
<b>Game Tables</b>	
Filotto	8
Scambio	28
Lungolinea	38
Scivolo	52
Derby	62
Unootto	70
Tuttuno	86
Sospeso	96
<b>Games and Accessories</b>	100
Mossa	102
Lancio	108
Tocco	110
Verso	112
Game sets	114
<b>IMPATIA and Creative Team</b>	120
Creative Direction	121
The Designers	122
<b>Technical Information</b>	124
<b>Terms and Conditions</b>	186
<b>Contacts</b>	188



## Elevate Leisure

A BEAUTIFUL WAY TO HAVE FUN

Located in the heart of the Milan district, known for its iconic fashion and design influences, Impatia embodies creativity and a flair for design in everything it does. Uniting the traditions of Italian design, art and craftsmanship to produce bespoke luxury game tables. At its core, Impatia manifests the principle of daring, distinct design that is destined to become a true classic. At Impatia each creation is a tale of excellence, driven by the core value of empathy.

Nata nel cuore del distretto produttivo di Milano, noto in tutto il mondo per le sue influenze nei campi della moda e del design, Impatia incarna l'estro creativo in ogni sua proposta. I suoi preziosi tavoli da gioco sono il risultato della tradizione del design, unita all'arte e all'artigianato italiano. L'anima di Impatia è sintetizzata nei principi del design audace e distinto, e destinata a diventare un vero classico. In Impatia ogni creazione è un racconto di eccellenza, guidato dal valore fondamentale dell'empatia.

## Entirely Made in Italy

HANDCRAFTED EXCELLENCE

Whether it is in the design, the craftsmanship or the materials used, Impatia always draws upon the highest quality of Italian traditions and innovations to create something that is harmonized between classic and modern. Impatia collaborates with talented artisans from across the country to bring to light creations that are one-of-a-kind. Proudly Made in Lombardy.

Nel design, nell'artigianato e nei materiali utilizzati, Impatia attinge sempre alla massima qualità della tradizione e innovazione italiana, perseguendo l'obiettivo di armonizzare classico e moderno. Impatia collabora con artigiani di talento da tutto il paese, proponendo creazioni uniche nel loro genere. Orgogliosamente Made in Lombardia.



Artisan Workshop  
Handcrafted leather pockets



Steel Workshop  
Unootta Connecting Joints



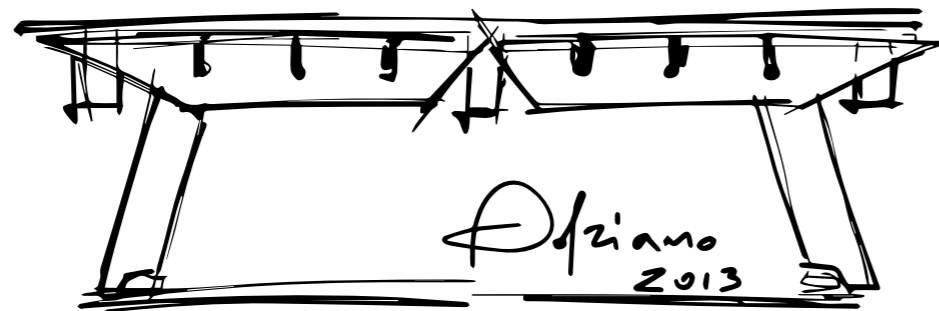
COLLECTION

## Filotto Collection

BILLIARD TABLE

Filotto is the first product created for Impatia's collection, that gives new life, new characteristics and new values to a classic product. The design, construction and workmanship of this work of genius are all Italian – showcasing the highest expression of technological sophistication and craftsmanship that has always distinguished Italy from the rest of the world.

Filotto è il primo tavolo ideato per la collezione di Impatia che dona nuova vita, nuove caratteristiche e nuovi valori a un prodotto classico. Il design, la costruzione e la lavorazione di questo innovativo biliardo sono tutti italiani e mostrano la massima espressione di sofisticazione tecnologica e dell'artigianalità che ha sempre distinto l'Italia dal resto del mondo.



Filotto Classic  
Wine Simonis cloth and Vino leather pockets



Filotto Classic

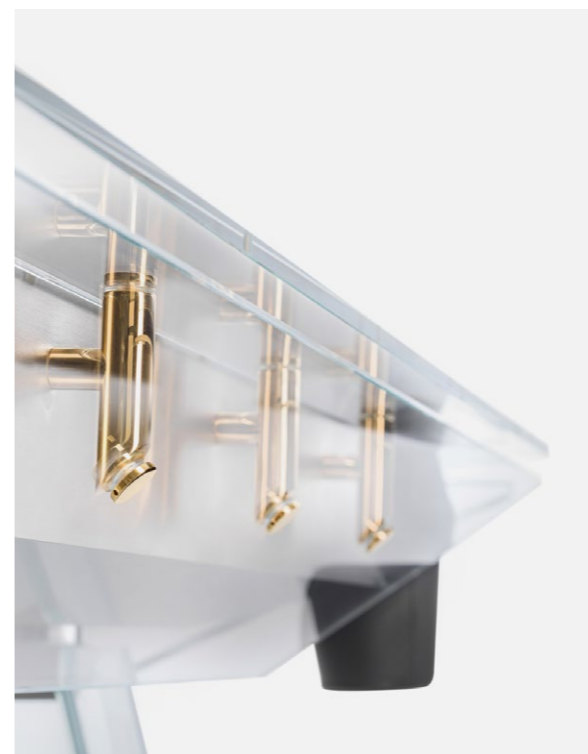


Filotto Classic  
Low-iron glass with metal components

## Filotto Gold

This edition of the Filotto takes the world of luxury to a whole new level by featuring handcrafted connecting joints made from gold made by Italian goldsmiths. While indeed beautiful in many aspects, the Filotto Gold Edition likewise ensures a premium quality gaming experience.

Questa edizione del Filotto porta il mondo del lusso a un livello completamente nuovo, caratterizzato da giunti artigianali in oro realizzati da orafi italiani. Anche Filotto Gold garantisce un'esperienza di gioco di qualità premium.





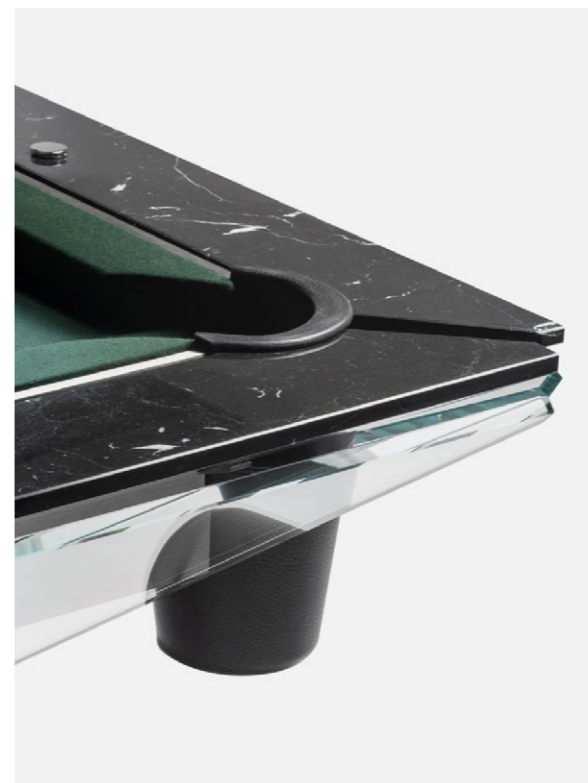
Filotto Gold  
Chartreuse Simonis cloth and Nero leather pockets



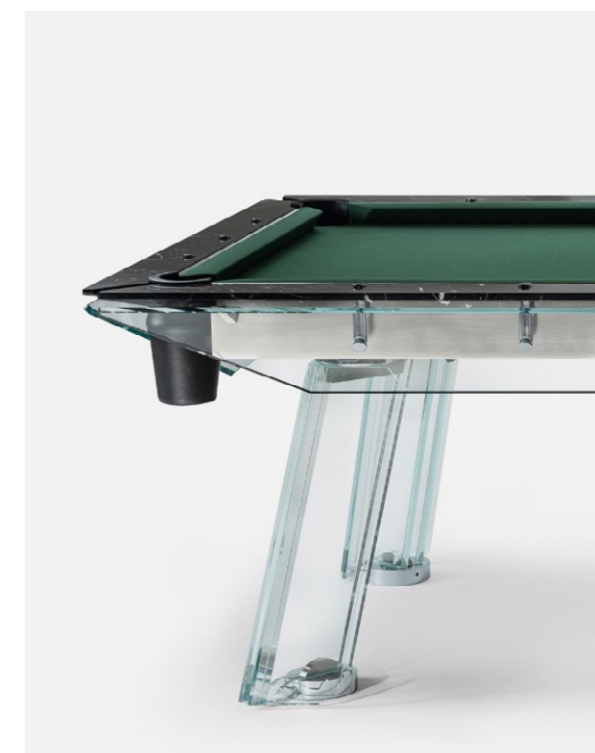
## Filotto Marble

A bold reinterpretation of our iconic pool table. Filotto takes on a marble body — grounding the game in pure stone while keeping its signature transparency untouched. Available in a refined selection of Italian marbles.

Una reinterpretazione audace del nostro iconico tavolo da biliardo. Filotto si veste di marmo — unisce la forza della pietra alla leggerezza della sua iconica trasparenza. Disponibile in una raffinata selezione di marmi italiani.



Marble and Transarent glass frame with handcrafted leather pocket



Customizable Simonis cloth playing field





## Filotto Dark

As a staple among Impatia's luxury game table collection, the Filotto pool table has always left an unforgettable impression, and now even more so with its sleek and modern smoked glass finish.

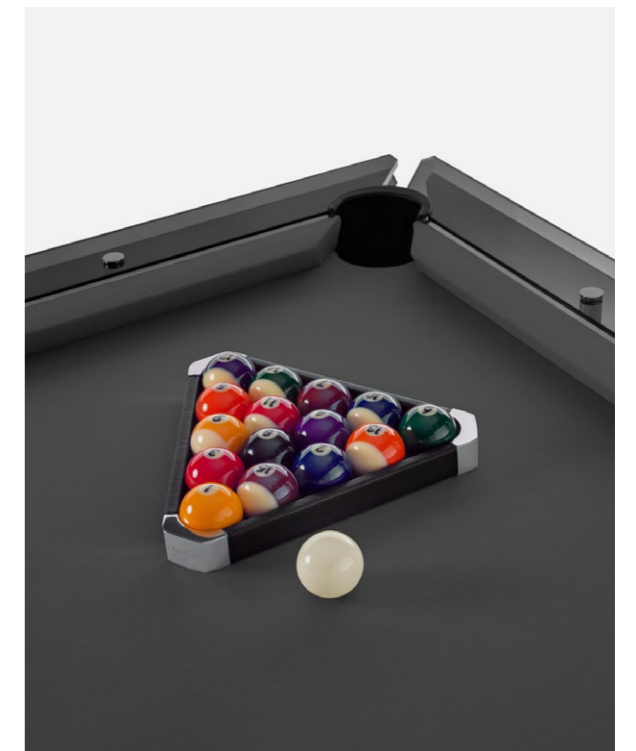
As a professional pool table, available in 8ft Pro and 7ft the Filotto Dark has a slate base, essential for any dedicated player, complemented by a customizable Simonis cloth playing field and elegant leather pockets.

Come un punto fermo nella collezione di tavoli da gioco di lusso di Impatia, il tavolo da biliardo Filotto ha sempre lasciato un'impressione indimenticabile, e ora ancora di più con la sua elegante e moderna finitura in vetro fumé.

Filotto Dark, tavolo da biliardo professionale, disponibile in 8 piedi Pro e 7 piedi, ha una base in ardesia, essenziale per ogni giocatore dedicato, completata da un campo da gioco in tessuto Simonis personalizzabile ed eleganti buche in pelle.



Smoked glass frame with handcrafted leather pocket



Customizable Simonis cloth playing field





Filotto Wood



Filotto Wood  
Bronze glass with walnut wood legs



Filotto Wood  
Smoked Glass and dark oak legs with a Slate Grey Simonis cloth

## Scambio

TABLE TENNIS

Scambio is a visual dialogue between solidity and lightness. Crafted from walnut and rosewood and supported by ethereal glass legs, it embodies an elegant contrast where the warmth of the wooden top meets the transparency of the structure, and tradition is reinvented. Two integrated leather-lined drawers discreetly store the paddles, balls, and leather net. The removable net allows the table to be transformed into a refined dining or meeting surface.

Scambio è un dialogo visivo tra solidità e leggerezza.

Realizzato in noce e palissandro e sorretto da eteree gambe in vetro, incarna un contrasto elegante in cui il calore del piano in legno incontra la trasparenza della struttura, e la tradizione si reinventa. Due cassetti integrati, rivestiti in pelle, custodiscono racchette, palline e rete in pelle. La rete removibile permette di trasformare il tavolo in una raffinata superficie da pranzo o da riunione.

Scambio  
Ping pong Leather Net





Scambio  
Walnut and rosewood, glass legs



Scambio  
Walnut and rosewood, glass legs



Scambio  
Walnut and rosewood, glass legs



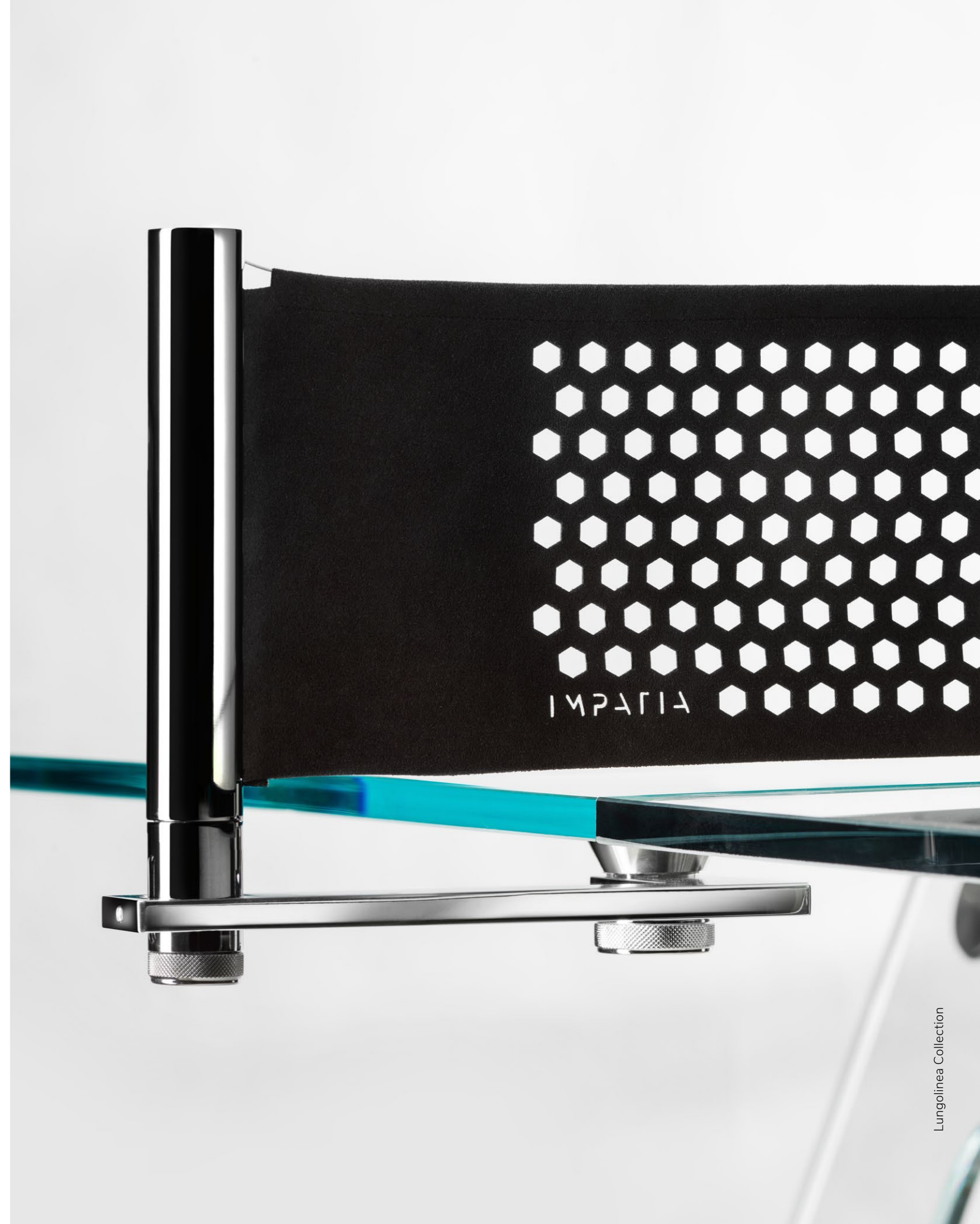
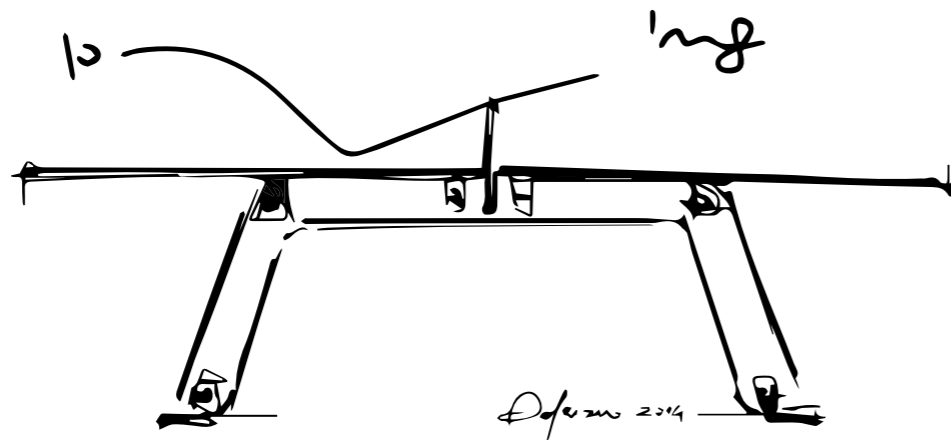


## Lungolinea Collection

### TABLE TENNIS

The idea of playing on a transparent game table may seem unimaginable, but thanks to careful engineering, it is now possible. Even for the most competitive professional players, a game of table tennis can now be enjoyed on a table made of complete glass.

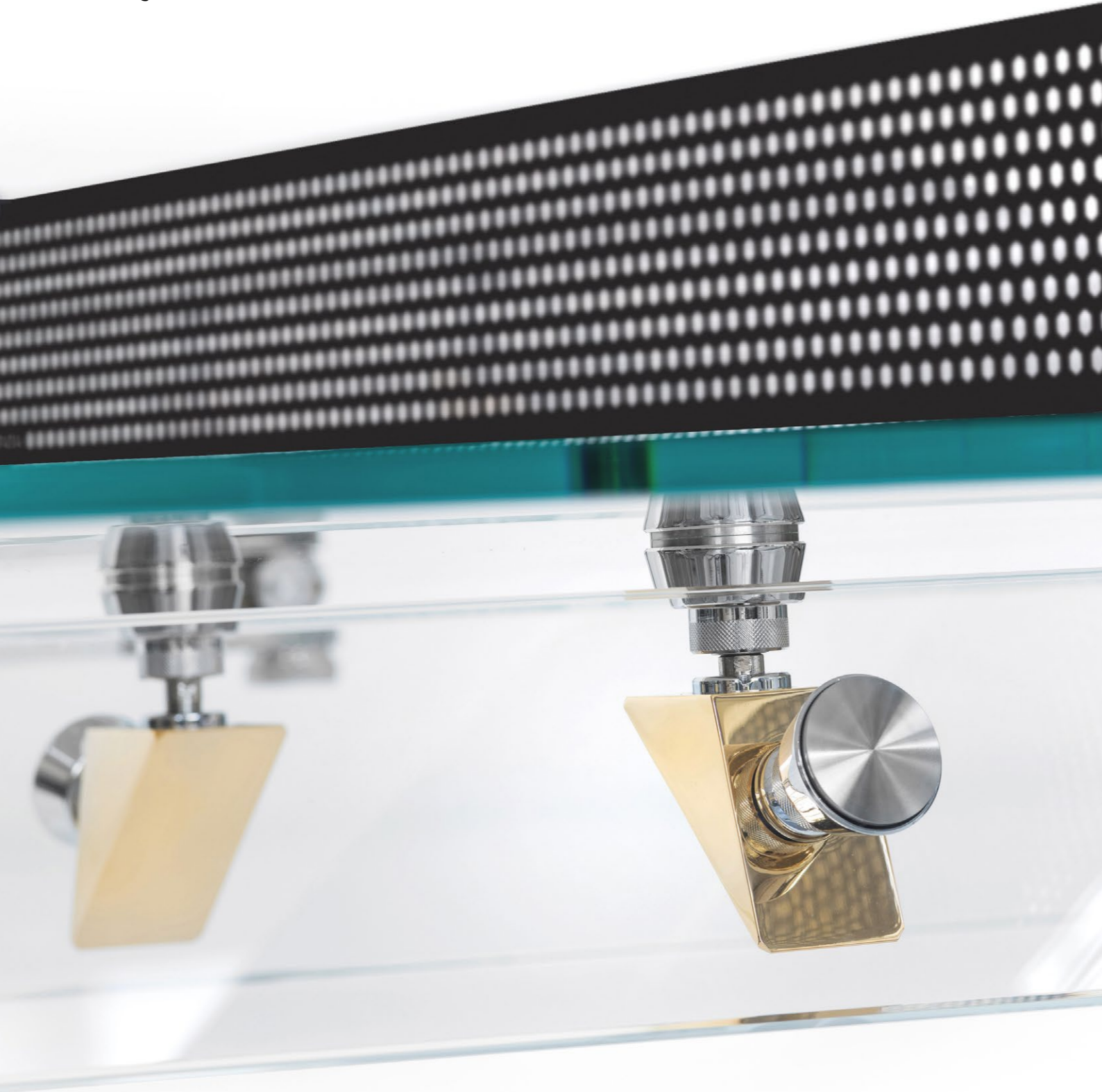
Giocare su una superficie trasparente può sembrare inimmaginabile, ma l'attenta progettazione di Lungolinea lo rende possibile. Con questo tavolo, anche i giocatori professionisti più competitivi possono apprezzare il tennis da tavolo su una superficie completamente in vetro.



Lungolinea Classic



Lungolinea Classic  
Low-iron glass with chrome components



Lungolinea Gold  
Gold plated components

Lungolinea Wood



Lungolinea Wood  
Chrome components with wooden legs and Alcantara net



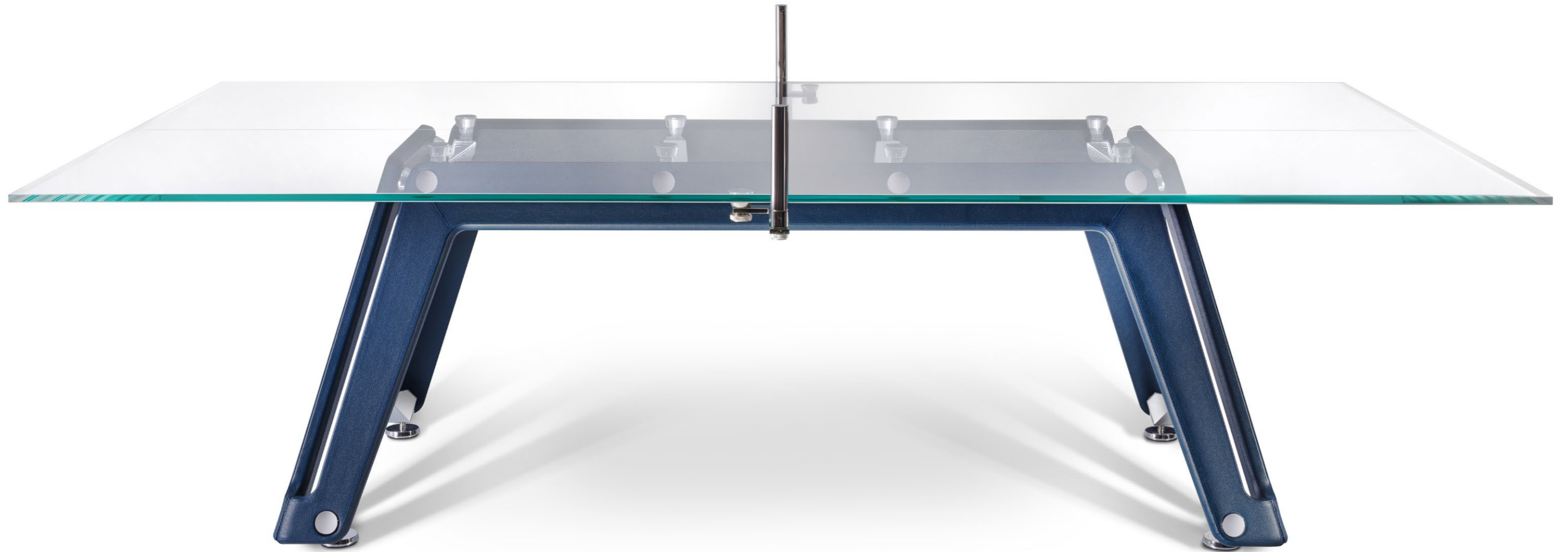
Lungolinea Wood introduces refined wooden accents, bringing a natural warmth and softness to the table's iconic transparent glass structure — a perfect harmony of tradition and innovation.

Questa edizione di Lungolinea presenta raffinati dettagli in legno, che donano calore e morbidezza naturali alla sua iconica struttura in vetro trasparente — un perfetto equilibrio tra tradizione e innovazione.



Lungolinea Wood  
Walnut legs with bronze glass

Lungolinea Leather



Lungolinea Leather  
Low-iron glass with chrome components



Lungolinea Leather  
Blu leather and Powder Alcantara



Lungolinea Leather  
Blu leather with chrome components

## Scivolo Collection

### SHUFFLEBOARD TABLE

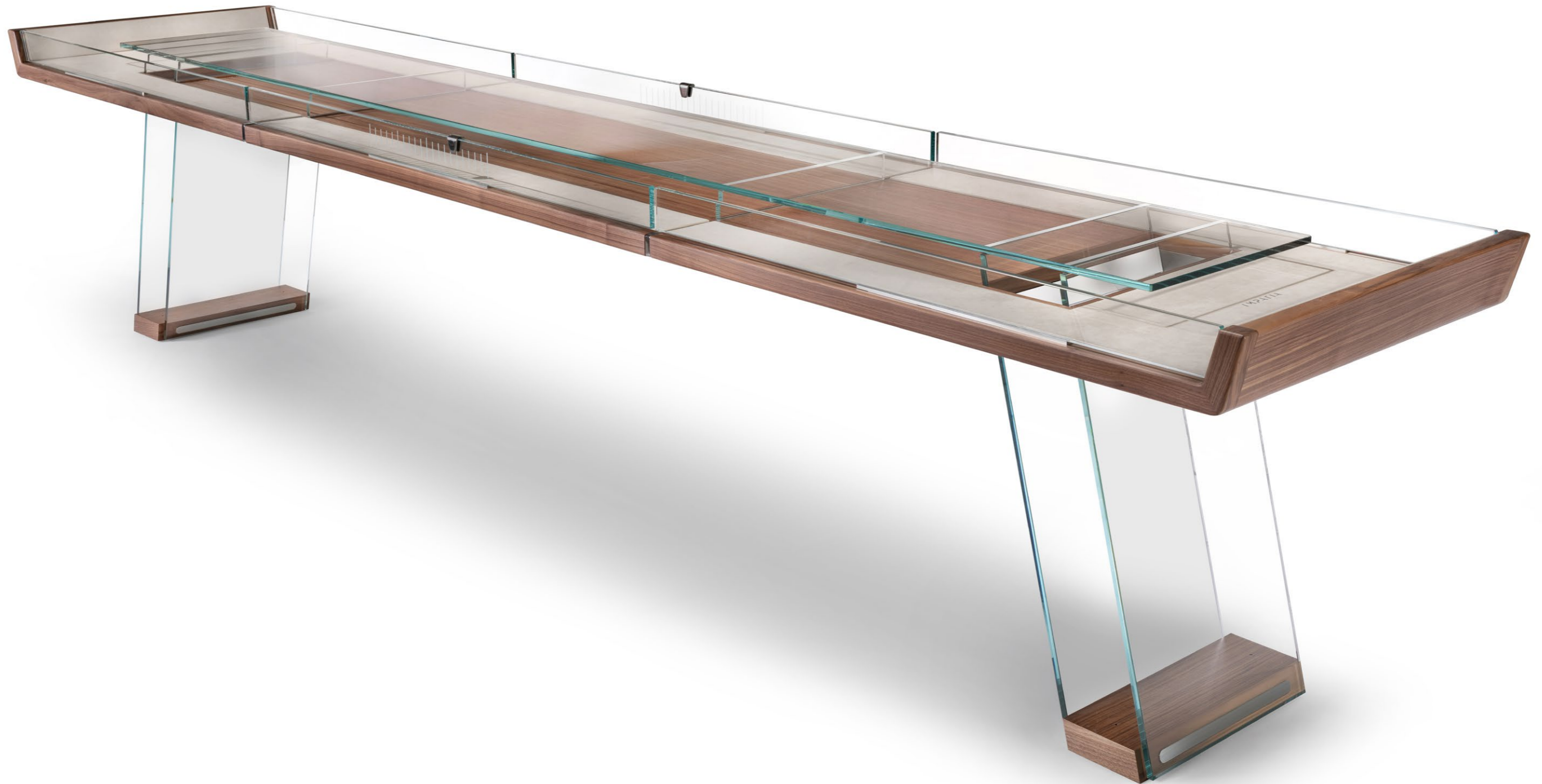
Scivolo represents IMPATIA's contemporary take on the traditional shuffleboard table, a game renowned for its ability to transcend barriers and unite people. Distinguished by its groundbreaking design featuring the innovative use of glass and minimalist aesthetics, Scivolo stands as a testament to original Italian design and masterful artisan production—a genuine Made in Italy masterpiece.

Scivolo rappresenta l'interpretazione contemporanea di IMPATIA del tradizionale Shuffleboard, un gioco noto per la sua capacità di superare le differenze e unire le persone. Distinguendosi per il suo design all'avanguardia che presenta l'uso innovativo del vetro e un'estetica minimalista, Scivolo diventa un testimone del design italiano originale e della produzione artigianale di eccellenza—un autentico capolavoro Made in Italy.

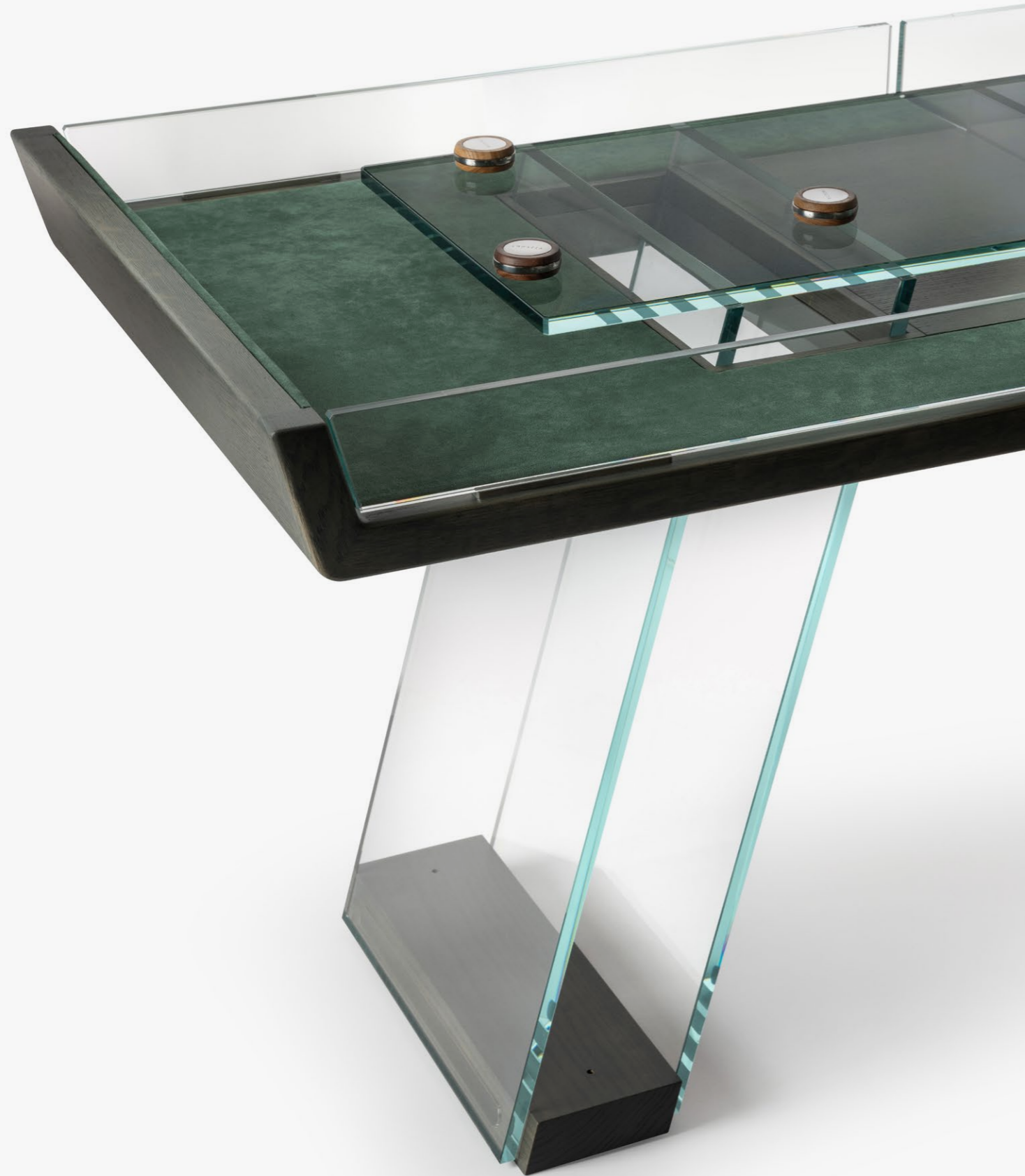


Scivolo Wood  
Walnut frame with a low-iron glass legs





Scivolo Wood  
Walnut and low iron structure with chrome components



The Scivolo shuffleboard showcases a dark oak wood frame, adding a warm and linear feel to the transparent glass legs and playing surface. Renowned for its timeless luxury finish, the Alcantara padding comes in a selection of 10 colors. Scivolo is thoughtfully designed to create an unparalleled gaming experience that seamlessly merges style with functionality.

Lo shuffleboard Scivolo mostra una cornice in legno di rovere scuro, che aggiunge un tocco caldo e lineare alle gambe trasparenti in vetro e alla superficie di gioco. Rinomato per la sua finitura di lusso senza tempo, il rivestimento in Alcantara è disponibile in una selezione di 10 colori. Scivolo è progettato con cura per creare un'esperienza di gioco senza pari, che fonde in modo impeccabile lo stile con la funzionalità.



Scivolo Wood  
Alcantara and Dark Oak surface



Scambio  
Walnut and rosewood, glass legs



Scambio  
Walnut and bronze glass legs



## Derby Collection

### FOOSBALL TABLE

For a game that is, loved by many around the world, IMPATIA is proud to present the Derby Collection, a modern rendition of the classic football table elevated by refined design, innovation, and the highest level of Italian artistry.

Dedicato ad un gioco amato in tutto il mondo, IMPATIA è orgogliosa di presentare la collezione Derby, una moderna interpretazione del classico calcio balilla, impreziosito da un design raffinato, innovativo e dal più alto livello di arte italiana.





Derby Wood  
Walnut frame with bronze glass playing field







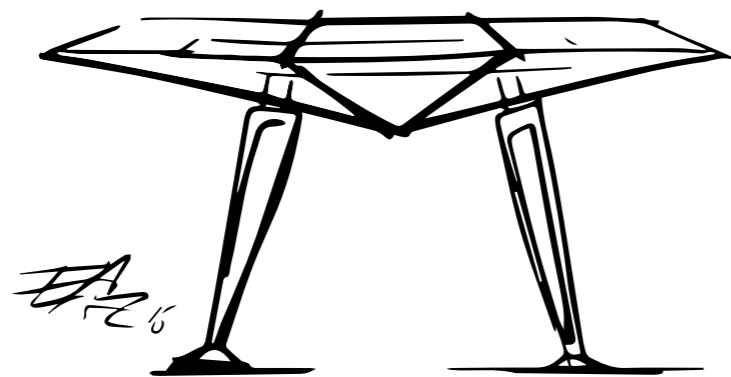
Derby Signature  
Walnut frame with Taj Black Quartzite stone playing field

## Unotto Collection

### CARD TABLE

Unotto is the reinterpretation of the traditional professional card table, making the A-game stylish and sophisticated. The entire structure is made of glass and is inspired by the classic cut of the diamond. The octagonal table consists of a frame that supports the playing surface in Alcantara®. The chrome finish metal legs make this jewel of an Italian design even more brilliant.

Unotto è la reinterpretazione del tradizionale tavolo da gioco di carte professionale, in grado di ridefinire l'A-game in modo elegante e sofisticato. L'intera struttura è in vetro ed è ispirata al classico taglio del diamante. Il tavolo ottagonale è costituito da una cornice che sostiene la superficie di gioco in Alcantara®. Le gambe in metallo con finitura cromata rendono questo gioiello del design italiano ancora più brillante.



Unotto Marble  
Nero Marquina marble frame with a low-iron glass edge



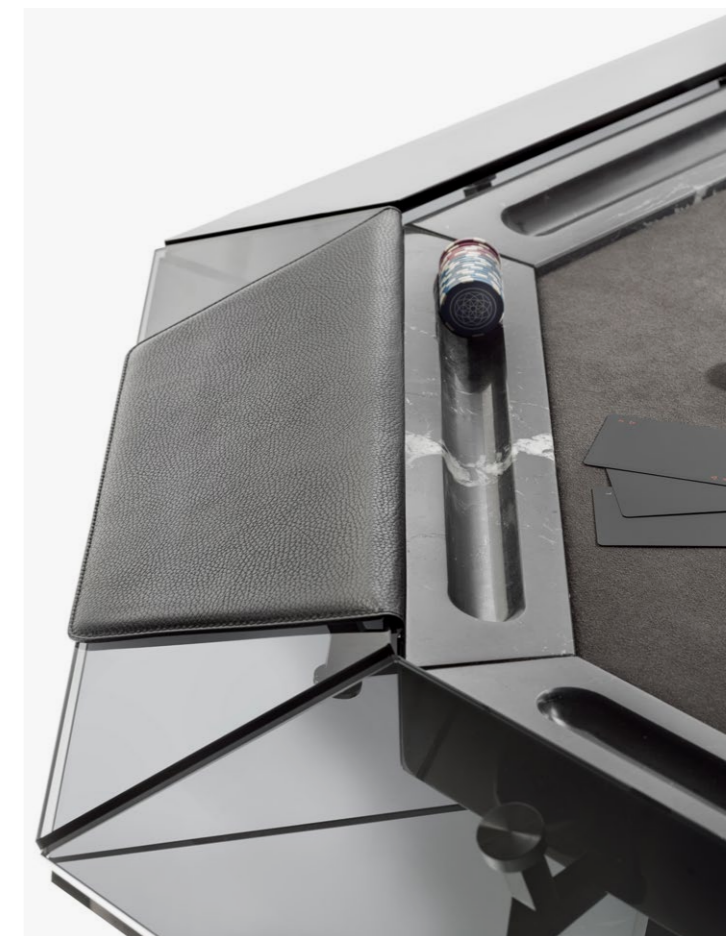
Unotto Marble  
Italian marble available in three colours



### Unotto Marble DARK EDITION

The refined lines of the Unotto card table welcome the player into the zone, that magic area in which the individual becomes one with the table, plunging into the game to the point of being able to predict his opponents' moves and transform his own to elicit success.

Le linee raffinate del tavolo da gioco di carte Unotto accolgono il giocatore in quell'area magica in cui l'individuo diventa un tutt'uno con la superficie di gioco, immergendosi nella partita fino a poter predire le mosse dei suoi avversari, o trasformare le proprie per vincere.



Unotto Dark  
Smoked glass with black matte components

## Unotto Marble

TRAVERTINE

Unotto – Travertine is a refined new reinterpretation of play, blending natural materials with Italian cultural heritage. Inspired by classical architecture, the travertine finish meets warm walnut wood legs to create a balanced, tactile experience. The result is a contemporary design that transforms a simple game into a moment of elevated leisure.

Unotto – Travertine Edition è una raffinata nuova reinterpretazione del gioco, che unisce materiali naturali all'estetica italiana. Ispirata all'architettura classica, la finitura in travertino incontra le gambe in caldo legno di noce, dando vita a un'esperienza tattile ed equilibrata. Il risultato è un design contemporaneo dal tocco elegante.

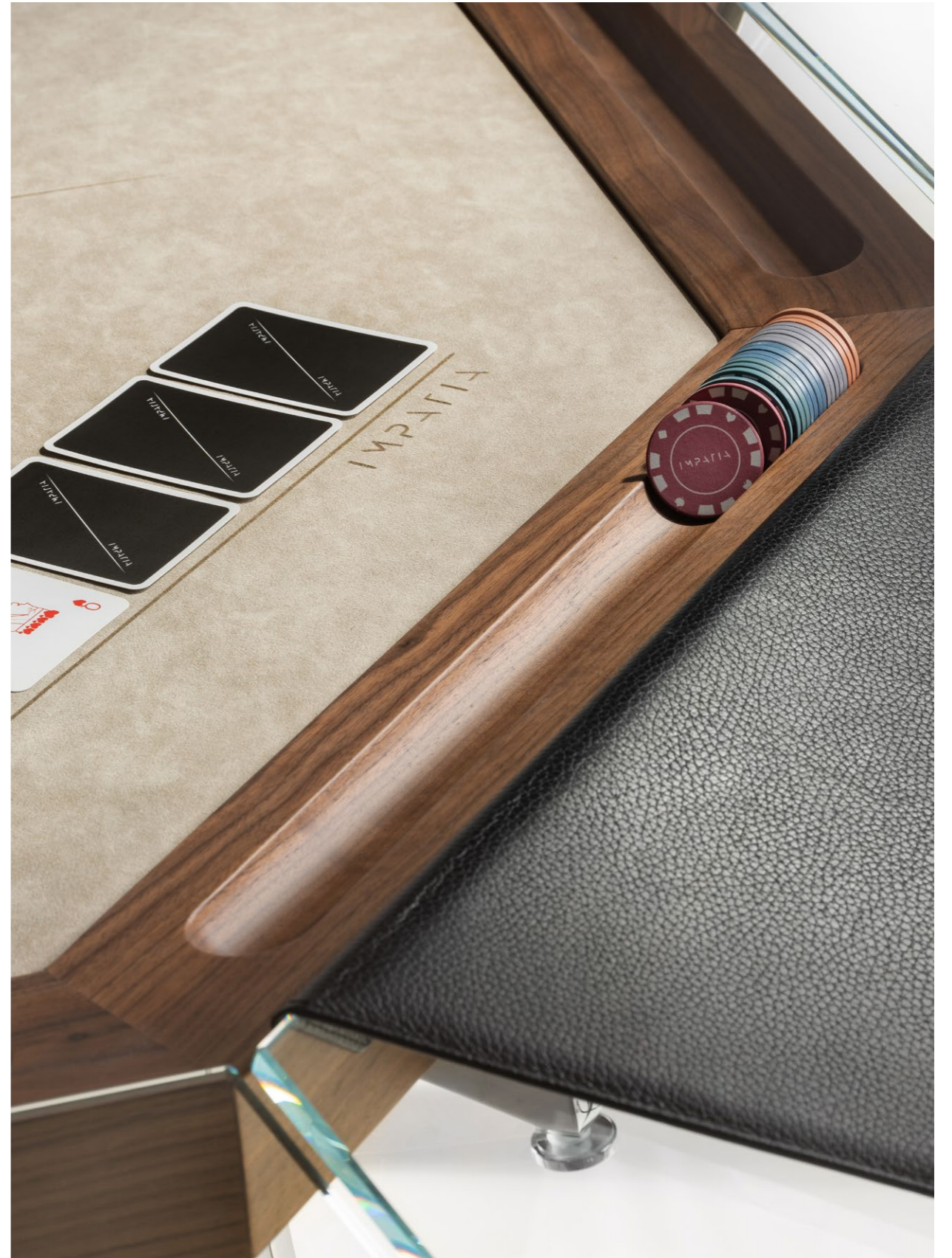




### Unotto Wood



Unotto Wood  
8 players card table with Bronze glass top and Walnut wood frame



Unotto Dark Wood



Unotto Wood  
Transparent glass with Dark oak and Anthracite Alcantara



## Tuttuno Collection

### MULTI-GAME TABLE

This modern table is designed to accommodate two or four players. The minimalistic design gives off the unique impression that the table is floating. Its design incorporates complexity and high quality material selection. The table is available in the Backgammon, Chess, Cards, Mahjong and Checkers version.

Questo moderno tavolo è progettato per ospitare due o quattro giocatori. Il design minimalista dà l'impressione unica che il tavolo fluttui nello spazio. Il suo design incorpora complessità e selezione dei materiali di alta qualità. Il tavolo è disponibile nelle versioni Backgammon, Scacchi, Carte, Mahjong e Dama, che includono esclusivi cofanetti di gioco disegnati da Impatia.



Tuttuno Leather  
Pearl Alcantara with a Chess playing surface



Tuttuno Leather  
CHESS

Tuttuno Leather  
BACKGAMMON



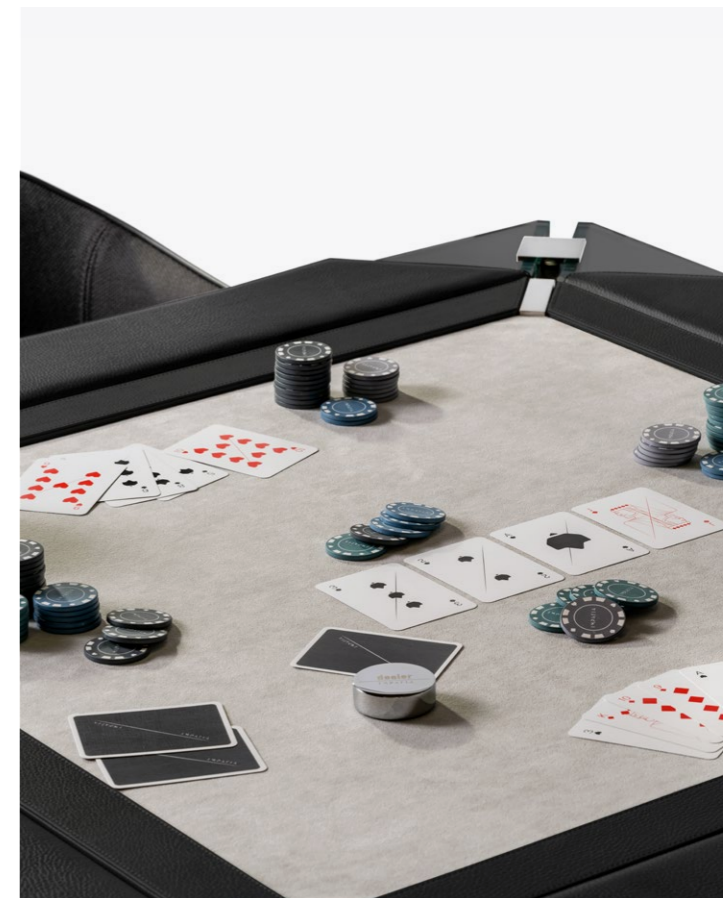
Tuttuno Leather  
Baby Grey Alcantara playing surface with Grigio leather frame



## Tuttuno Leather

Tuttuno's transparent aesthetic is the result of design precision and materiality. The elegant Alcantara® covering of the playing surface is highlighted by the essential glass structure of Tuttuno, which, with a simple gesture, can also be used as an elegant side table.

L'estetica trasparente di Tuttuno è il risultato della precisione e della materialità del design. L'elegante rivestimento in Alcantara® della superficie di gioco è evidenziato dall'essenziale struttura in vetro di Tuttuno che, con un semplice gesto, può essere utilizzato anche come elegante tavolino.



Tuttuno Leather  
Pearl Alcantara with a Card playing surface

## Tuttuno Casinò Collection

### CARD TABLE

This modern table is designed to accommodate two or four players. The minimalistic design gives off the unique impression that the table is floating. Its design incorporates complexity and high quality material selection. The table is available in the Backgammon, Chess, Cards, Mahjong and Checkers version.

Questo moderno tavolo è progettato per ospitare due o quattro giocatori. Il design minimalista dà l'impressione unica che il tavolo fluttui nello spazio. Il suo design incorpora complessità e selezione dei materiali di alta qualità. Il tavolo è disponibile nelle versioni Backgammon, Scacchi, Carte, Mahjong e Dama, che includono esclusivi cofanetti di gioco disegnati da Impatia.



Tuttuno Casinò Collection  
available in 6, 8, 10 player editions, with glass, metal, leather, and alcantara options





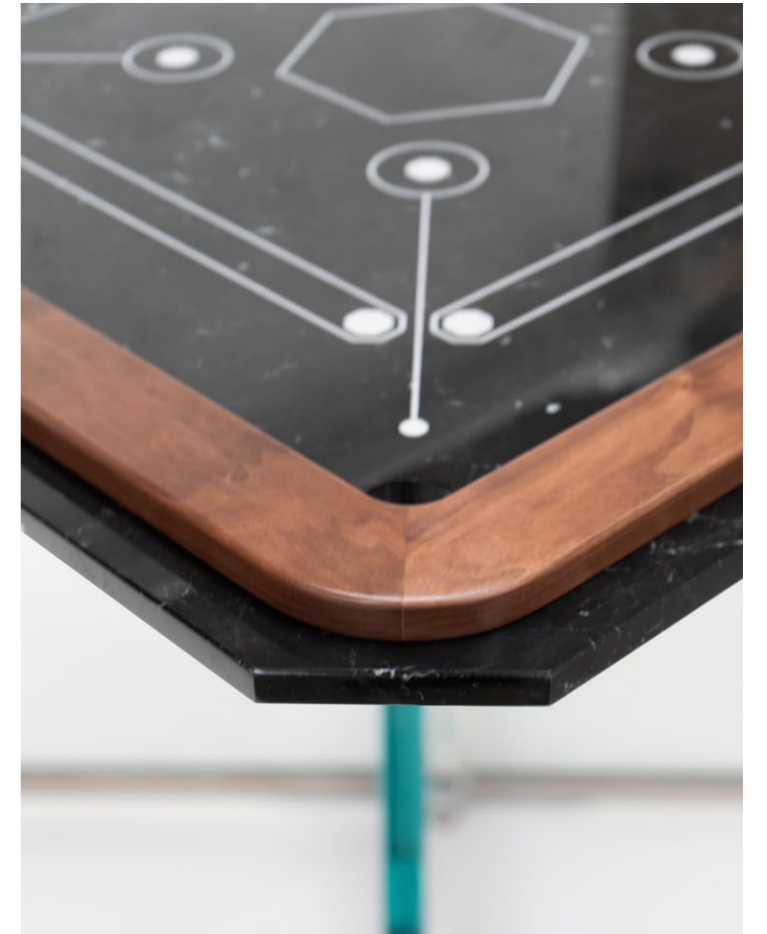


## Sospeso

### CARROM TABLE

The design of this Carrom table is defined by a sculptural structure, where transparency meets solidity in a play of weights and reflections. The base, composed of transparent glass wings arranged in a radial pattern, supports the top with an almost ethereal lightness, creating a sense of architectural balance suspended in a void.

Il design di questo tavolo da Carrom è definito da una struttura scultorea, dove la trasparenza incontra la solidità in un gioco di pesi e riflessi. La base, composta da ali di vetro trasparente disposte in un motivo radiale, sostiene il piano con una leggerezza quasi eterea, creando una sensazione di equilibrio architettonico sospeso nel vuoto.



Sospeso  
Nero marquina marble playing surface with walnut wood details.

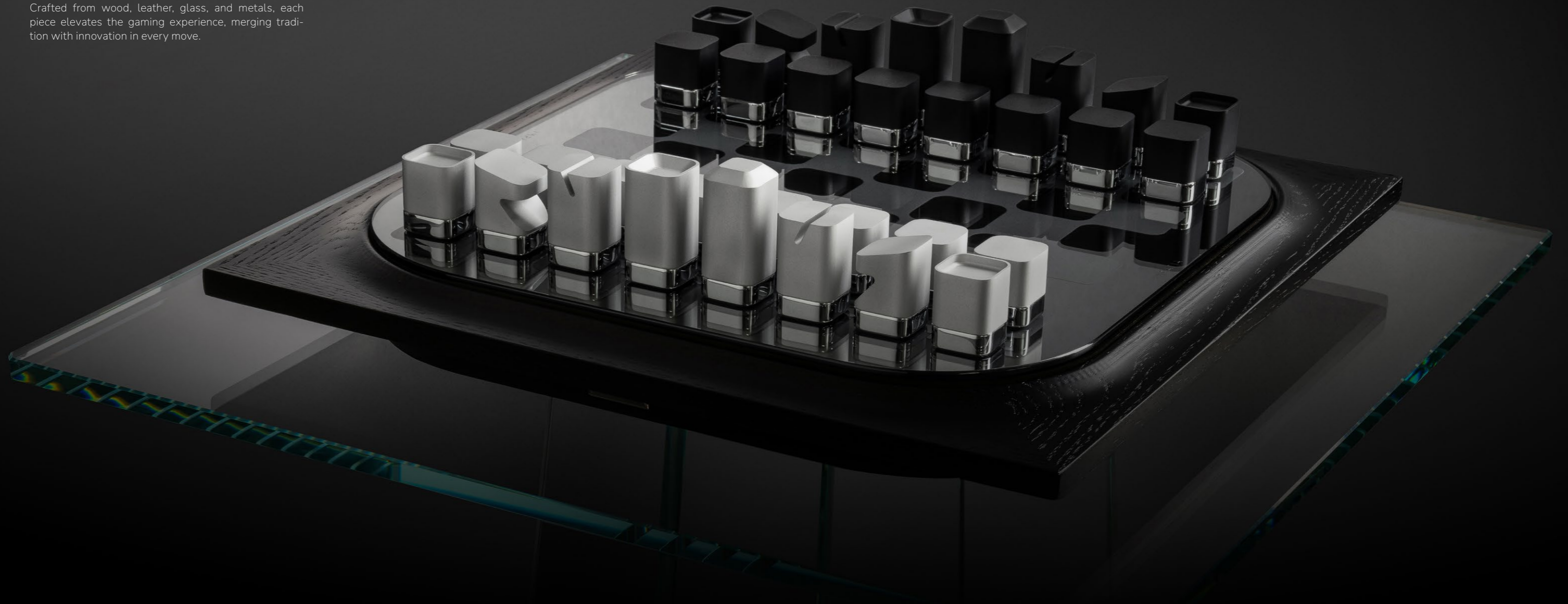




GAMES AND ACCESSORIES

Mossa  
CHESS GAME

DESIGNED BY IMPATIA R&D. Our first chess set blends fluid shapes with bold design, turning strategy into art. Crafted from wood, leather, glass, and metals, each piece elevates the gaming experience, merging tradition with innovation in every move.





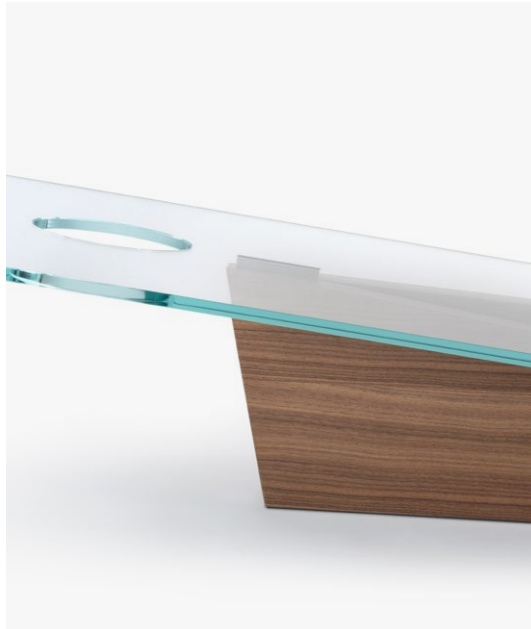


## Lancio Collection

### CORNHOLE

IMPATIA reimagines the classic game of "cornhole" by blending sophisticated design with the game's inherent simplicity. Suitable for both indoor and outdoor settings, Lancio's unique design features a glass plate supported by a marble or wood base. Lancio is complemented with eight cornhole bags meticulously handcrafted by Italian artisans using Alcantara and leather.

IMPATIA reinterpreta il classico gioco del "cornhole" unendo un design sofisticato alla semplicità intrinseca del gioco. Adatto sia per ambienti interni che esterni, il design unico di Lancio presenta un piatto in vetro supportato da una base in marmo o in legno. Lancio è arricchito da otto sacchetti per cornhole meticolosamente realizzati a mano da artigiani italiani utilizzando l'Alcantara e pelle.



Lancio Wood  
Alcantara and leather bags



**Tocco**  
MARBLE CUE RACK

Italian marble in its truest form, showcased with subtle touches of minimalistic design to enhance any living space. The Tocco cue rack is a classic accessory that has been reinterpreted in a flawless manner.

Il marmo italiano nella sua forma più vera, dal design minimalista in grado di valorizzare qualsiasi spazio abitativo. Il porta stecche Tocco è un accessorio classico che è stato reinterpretato in modo impeccabile.



Tocco by Adriano Design  
Bianco di Carrara



## Verso

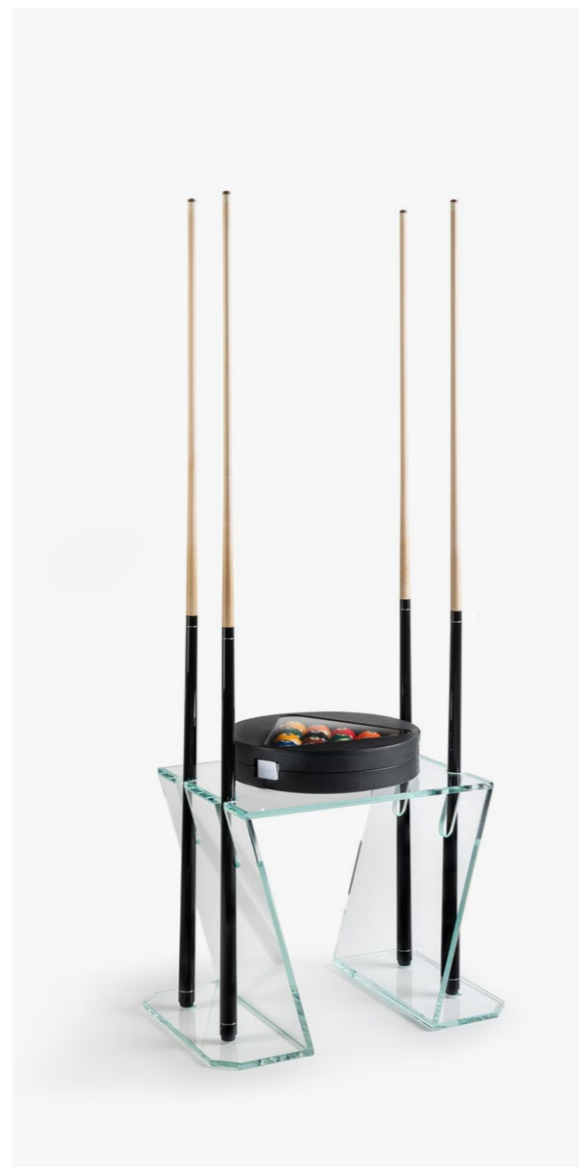
### CUE RACK

The Verso glass cue rack distinguishes itself as a singular example of design and functionality, reinventing a classic accessory with visual boldness and timeless elegance. The cues, placed at the sides of the structure, highlight the perfect equilibrium between form and function, where every detail is conceived to elevate the game to new achievements.

Il porta stecche Verso si distingue come un esemplare unico di design e funzionalità, reinventando un accessorio classico con un'audacia visiva e una raffinatezza senza tempo. Le stecche, poggiate ai lati della struttura, sottolineano l'equilibrio perfetto tra forma e funzione, dove ogni dettaglio è pensato per elevare il gioco a nuovi traguardi.



Verso by IMPATIA R&D  
Low-iron glass



Verso  
Smoked Glass

### Filotto Game Set BILLIARDS

Among a strong focus on developing one of kind game tables it is just as equally important to focus on the accessories. As a result, Impatia offers a range of luxury game accessories that complement each table perfectly. Extending the use of high-quality materials and Italian craftsmanship each accessory set is carefully thought out and designed to perfection.



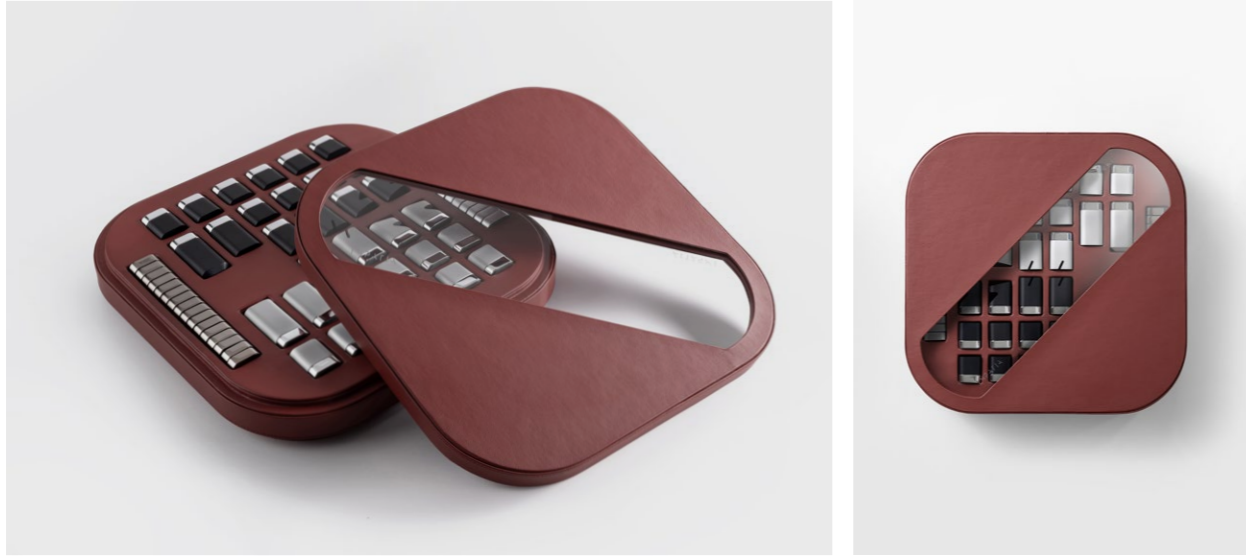
Handcrafted from leather

### Unotto Game Set POKER



Oltre ad una forte attenzione allo sviluppo di tavoli da gioco unici nel loro genere, è altrettanto importante concentrarsi sugli accessori. Di conseguenza, Impatia offre una gamma di accessori di gioco di lusso che completano perfettamente ogni tavolo. Estendendo l'uso di materiali di alta qualità e artigianato italiano, ogni set di accessori è attentamente pensato e progettato alla perfezione.

**Tuttuno Game Set**  
CHESS AND CHECKERS



BACKGAMMON





IMPATIA and the Creative Team

## A human-to-human approach

At Impatia each creation is a tale of excellence, driven by the core value of empathy. The human-to-human approach creates a journey of exploration, which is highlighted by technical development, high-quality materials, and incomparable aesthetic refinement.

In Impatia ogni creazione è un racconto di eccellenza, guidato dal valore fondamentale dell'empatia. L'approccio uomo-a-uomo pone le basi ad un viaggio di esplorazione per ogni creazione, evidenziato dallo sviluppo tecnico, dai materiali di alta qualità e dall'incomparabile raffinatezza estetica.



## Creative Direction

IMPATIA

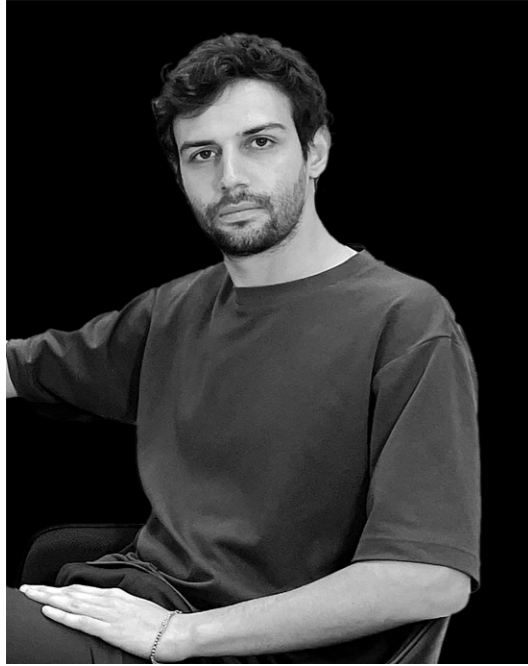
Founders Irene Prandoni and Gregg Brodarick lead the creative process at Impatia, developing design products that refined elegance along with functionality. Both with a background in architecture, the Italian and American duo bring a unique tailor-made experience that constantly aims to push the boundaries of the game table industry and bring a flair to the DNA of Impatia.

I fondatori Irene Prandoni e Gregg Brodarick guidano il processo creativo di Impatia, sviluppando prodotti dall'eleganza ricercata unita a un design funzionale. Accomunato anche dalla formazione nel campo dell'architettura, il duo italo-americano condivide un'esperienza unica e su misura che mira costantemente a ridefinire i confini dell'industria dei tavoli da gioco, incorporandoli nel DNA di Impatia.



## Martino Gardenghi

INDUSTRIAL DESIGNER



Martino Gardenghi is an Industrial Designer who graduated from the Politecnico di Milano and holds a Master's degree in **Industrial Design for Play** from Designskolen Kolding in Denmark. He is currently part of the research and development team at Impatia. Martino has gained valuable international experience, working as a designer in both Denmark and Italy, shaping a versatile and innovative design approach. Through his work, he seeks to combine craftsmanship with playful interaction, creating elegant objects that inspire connection and storytelling.

Martino Gardenghi è un Designer Industriale laureato al Politecnico di Milano con Master in Design Industriale per il Gioco presso la Designskolen Kolding in Danimarca, attualmente parte del team di ricerca e sviluppo di Impatia. Martino ha acquisito un'esperienza internazionale preziosa, lavorando come designer sia in Danimarca che in Italia, plasmando così un approccio di design versatile ed innovativo. Attraverso il suo lavoro cerca di combinare l'artigianato con l'interazione ludica, creando oggetti eleganti che ispirano connessione e storytelling.

## Lucia Guazzi

PRODUCT DESIGNER

Product Designer Lucia Guazzi, who graduated from Politecnico Milano, was part of Impatia's research and development team, helping develop a range of design products within the collection. In 2022, Guazzi received multiple awards for the Derby Football Table, including the GOOD DESIGN and the Archiproduct Design Award. With a balance between technical knowledge and creative ability, Guazzi has elevated Impatia's R&D team into creating design objects that showcase a beautiful way to have fun.

La Product Designer Lucia Guazzi, laureata al Politecnico di Milano, ha fatto parte del team di ricerca e sviluppo di Impatia, contribuendo allo sviluppo di una gamma di prodotti di design all'interno della collezione. Nel 2022, Guazzi ha ricevuto numerosi premi per il Calcio balilla Derby, inclusi il GOOD DESIGN e l' Archiproduct Design Award. Con un equilibrio tra conoscenza tecnica e capacità creativa, Guazzi ha portato il team di R&S di Impatia a creare oggetti di design che mostrano un modo bello di divertirsi.



## Adriano Design

PRODUCT DESIGNERS

The Torino based design studio Adriano Design, formed by brothers Davide and Gabriele Adriano, designed the glass Lungolinea table tennis and Filotto billiard table for Impatia. Established in 1997, the studio has worked in collaboration with prominent global brands. Their wide range of work has also been displayed in some of the most distinguished museums, including the Triennale Design Museum in Milan and the Chicago Athenaeum. They have received numerous international awards, including the prestigious Compasso d'Oro ADI in 2014 and 2022.

Lo studio di design torinese Adriano Design, fondato dai fratelli Davide e Gabriele Adriano, ha creato per Impatia il tavolo da ping pong in cristallo Lungolinea e il tavolo da biliardo Filotto. Avviato nel 1997, lo studio vanta collaborazioni con rinomati marchi internazionali. Una selezione dei loro numerosi progetti è stata esposta in prestigiosi musei, tra cui la Triennale di Milano e il Chicago Athenaeum. Hanno ottenuto diversi riconoscimenti internazionali, inclusi il Compasso d'Oro nel 2014 e nel 2022.



## Enrico Azzimonti

ARCHITECT AND DESIGNER



Enrico Azzimonti designed the Unootto glass poker table for Impatia which received the distinguished GOOD DESIGN Award in 2022. Driven by a passion for innovation and Italian industrial design, Azzimonti established his studio in 1994 and since then has researched and developed products for Italian and international brands.

He has won numerous awards, including the Platinum A'Design Award in 2017, and selections of his projects are permanently shown in The Design Museum of Barcelona.

Enrico Azzimonti ha progettato il tavolo da poker in vetro Unootto per Impatia, ricevendo il prestigioso premio GOOD DESIGN nel 2022. Mosso da una passione per l'innovazione e il design industriale italiano, Azzimonti ha fondato il suo studio nel 1994 e da allora si è dedicato alla ricerca e allo sviluppo di prodotti per marchi italiani e internazionali.

Ha ricevuto numerosi riconoscimenti, tra cui il Platinum A'Design Award nel 2017, e alcune selezioni dei suoi progetti sono esposte in modo permanente al Museo del Design di Barcellona.



TECHNICAL INFORMATION

Filotto Classic  
7ft - 8ft Pro



268 cm

105,5"

82 cm (h)

32"



152 cm

60"

PRODUCT INFORMATION  
Frame and legs in low-iron glass  
Chrome components  
Three-piece Italian slate base  
Simonis cloth  
Leather pockets

\*7FT DIMENSIONS  
235 x 135 x 82 (h) cm  
92,5 x 53 x 32 (h)"

PACKAGING INFORMATION  
164 x 134 x 90 (h) cm  
65 x 52 x 35 (h)"  
820 Kg / 1807 lbs

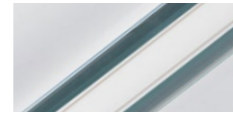
PRODUCT WEIGHT  
640 Kg / 1410 lbs (8ft)  
470 Kg / 1036 lbs (7ft)

SUGGESTED ROOM DIMENSION  
600 x 485 cm / 234 x 190"  
MINIMUM ROOM DIMENSION  
550 x 435 cm / 217 x 171"

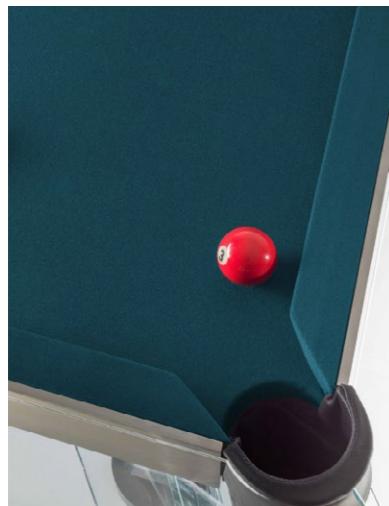
SELECTED MATERIALS



Chrome



Transparent Glass



Simonis cloth



Frame and legs in low-iron glass



Leather pockets

FILOTTO SIMONIS CLOTH



Simonis Green™



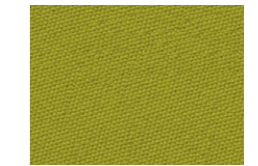
Blue Green



Dark Green



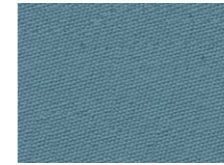
English Green



Chartreuse



Petroleum Blue



Powder Blue



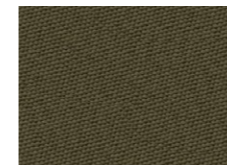
Electric Blue



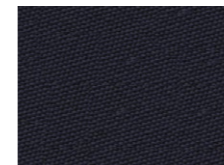
Tournament Blue™



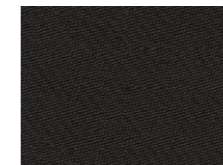
Royal Blue



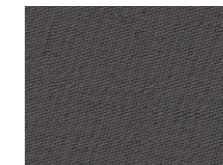
Olive



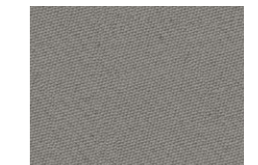
Marine blue



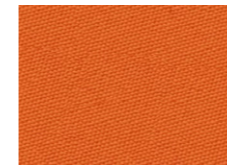
Black



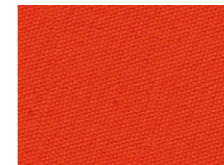
Slate Grey



Grey



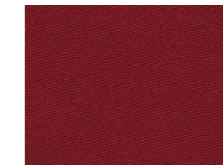
Burnt Orange



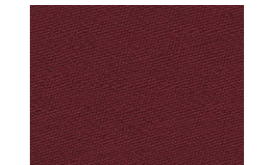
Orange



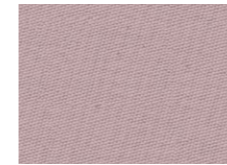
Red



Burgundy



Wine



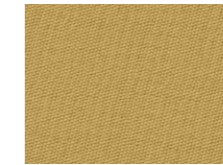
Dusty Pink



Purple



Mocha



Gold

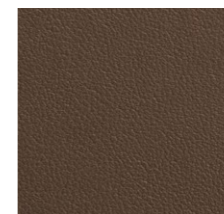


Espresso

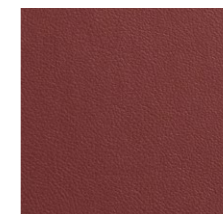
SELECTED LEATHER



Nero



Tabacco



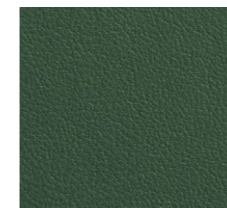
Vino



Arancio



Beige



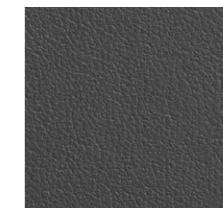
Verde



Cielo



Grigio



Cenere



Blu

Filotto Marble  
7ft - 8ft Pro



268 cm

105,5"

82 cm (h)

32"

PRODUCT INFORMATION

Top frame in Marble  
Legs and frame in low-iron glass  
Selected chrome components  
Three-piece Italian slate base  
Simonis cloth  
Leather pockets

PRODUCT WEIGHT

640 Kg / 1410 lbs (8ft)  
470 Kg / 1036 lbs (7ft)

\*7FT DIMENSIONS

235 x 135 x 82 (h) cm  
92,5 x 53 x 32 (h) "

PACKAGING INFORMATION

164 x 134 x 90 (h) cm  
65 x 52 x 35 (h) "  
820 Kg / 1807 lbs

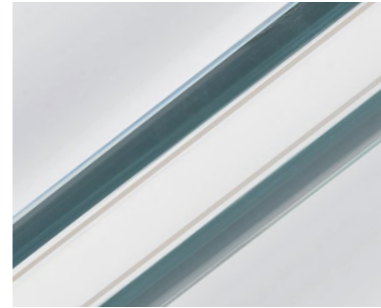
SUGGESTED ROOM DIMENSION

600 x 485 cm / 234 x 190"

MINIMUM ROOM DIMENSION

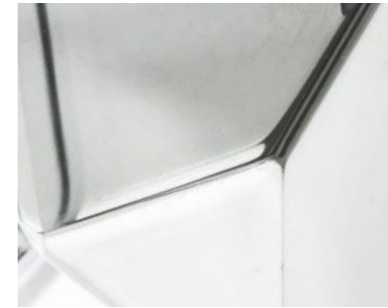
550 x 435 cm / 217 x 171"

SELECTED GLASS



Transparent

SELECTED METAL



Chrome

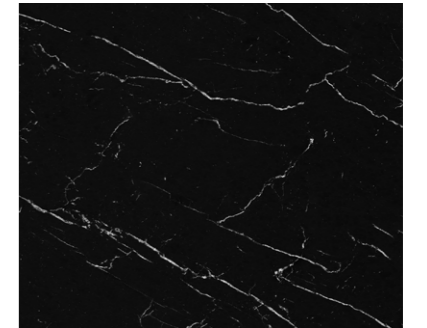
SELECTED MARBLE



Travertino



Bianco di Carrara



Nero Marquina



Marble and Low iron glass structure



Legs in low-iron glass



Leather pockets and Marquina Marble

Filotto Gold  
7ft - 8ft Pro



268 cm

105,5"

82 cm (h)

32"



152 cm

60"

PRODUCT INFORMATION  
Frame and legs in low-iron glass  
Selected gold plated components  
Three-piece Italian slate base  
Simonis cloth  
Leather pockets

\*7FT DIMENSIONS  
235 x 135 x 82 (h) cm  
92,5 x 53 x 32 (h) "

PRODUCT WEIGHT  
640 Kg / 1410 lbs (8ft)  
470 Kg / 1036 lbs (7ft)

PACKAGING INFORMATION  
164 x 134 x 90 (h) cm  
65 x 52 x 35 (h) "  
820 Kg / 1807 lbs

SUGGESTED ROOM DIMENSION  
600 x 485 cm / 234 x 190"

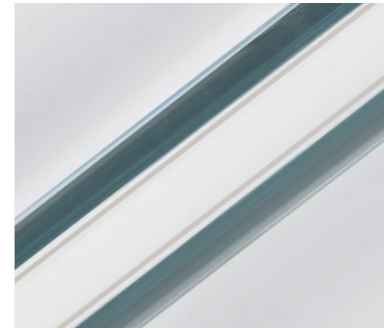
MINIMUM ROOM DIMENSION  
550 x 435 cm / 217 x 171"

SELECTED METAL



Gold

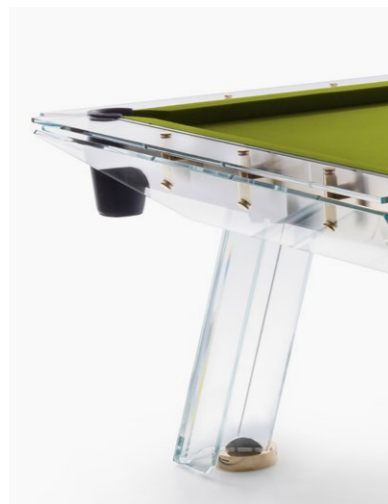
SELECTED GLASS



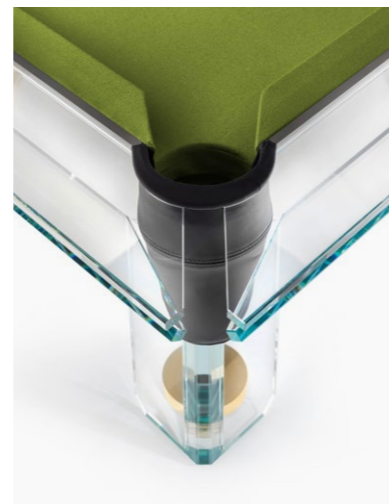
Transparent



Gold plated components



Frame and legs in low-iron glass



Leather pockets

Filotto Dark  
7ft - 8ft Pro



268 cm

105,5"

82 cm (h)

32"



152 cm

60"

PRODUCT INFORMATION  
Frame and legs in tinted glass  
Chrome components  
Three-piece Italian slate base  
Simonis cloth  
Leather pockets

\*7FT DIMENSIONS  
235 x 135 x 82 (h) cm  
92,5 x 53 x 32 (h) "

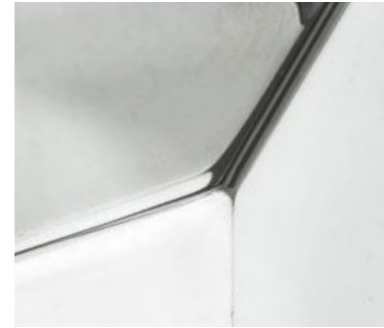
PRODUCT WEIGHT  
640 Kg / 1410 lbs (8ft)  
470 Kg / 1036 lbs (7ft)

PACKAGING INFORMATION  
164 x 134 x 90 (h) cm  
65 x 52 x 35 (h) "  
820 Kg / 1807 lbs

SUGGESTED ROOM DIMENSION  
600 x 485 cm / 234 x 190"

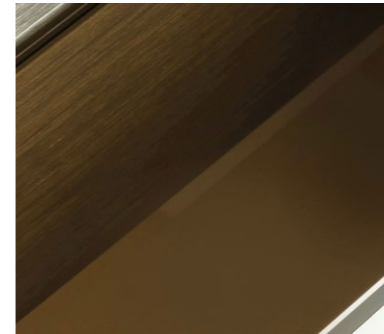
MINIMUM ROOM DIMENSION  
550 x 435 cm / 217 x 171"

SELECTED METAL



Chrome

SELECTED GLASS



Bronze



Smoked



Chrome foot joint



Bronze glass frame



Leather pocket

Filotto Wood  
7ft - 8ft Pro



268 cm  
105,5"



152 cm  
60"

PRODUCT INFORMATION  
Frame in tinted glass  
Legs in wood  
Chrome components  
Three piece Italian slate base  
Simonis cloth  
Leather pockets

\*7FT DIMENSIONS  
235 x 135 x 82 (h) cm  
92,5 x 53 x 32 (h) "  
PRODUCT WEIGHT  
640 Kg / 1410 lbs (8ft)  
470 Kg / 1036 lbs (7ft)

PACKAGING INFORMATION  
164 x 134 x 90 (h) cm  
65 x 52 x 35 (h) "  
820 Kg / 1807 lbs  
SUGGESTED ROOM DIMENSION  
600 x 485 cm / 234 x 190"  
MINIMUM ROOM DIMENSION  
550 x 435 cm / 217 x 171"

SELECTED METAL

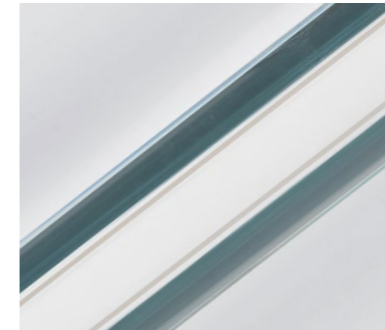


Chrome



Gold

SELECTED GLASS



Transparent

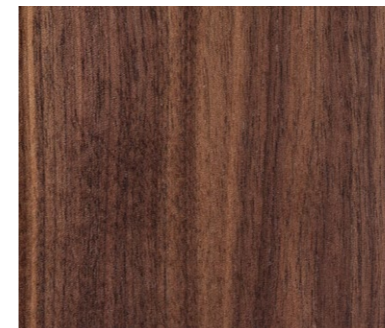


Bronze

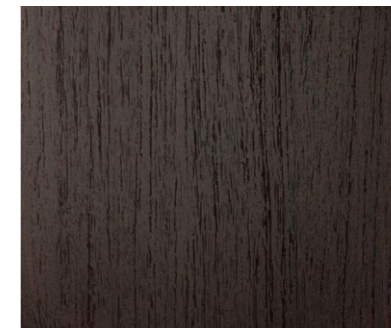


Smoked

SELECTED SOLID WOODS



Walnut



Dark Oak



Transparent glas and Dark Oak Legs



Bronze glass frame  
Walnut wood legs



Smoked glass frame

## Filotto Accessories



## Billiards Game Set

Handcrafted from leather  
Glass detailing and chrome components  
Available in a range of 10 colors.  
Made in Italy

## SET INCLUDES

1 Professional cue ball game set  
1 Leather triangle rack  
4 Chucks

## DIMENSIONS AND WEIGHT

36,3 Ø x 8,5 cm  
14,3 Ø x 3,3"  
Gross Weight: 8 kg / 17 lbs



## Tocco Cue Rack

Design by Adriano Design  
Solid marble, Made in Italy  
\*Cue stick set not included

## DIMENSIONS AND WEIGHT

28 x 28 x 28 (h) cm  
11 x 11 x 11 (h) "  
36 Kg / 79 lbs

## PACKAGING INFORMATION

35 x 35 x 40 (h) cm  
14 x 14 x 16 (h) "  
40 Kg / 88 lbs

## Cue Stick Set (4)

Made in Italy



## Filotto Removable Top

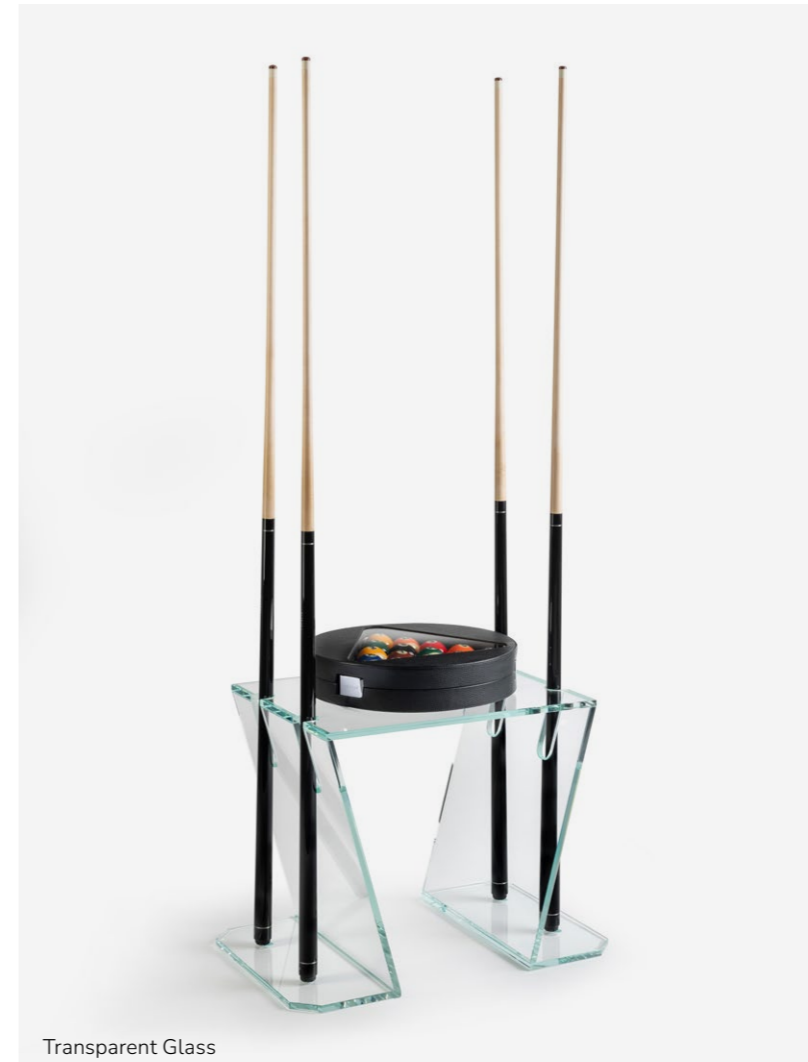
FENIX custom top  
Consists of two-pieces  
Made in Italy  
Includes removable ping pong net kit

## DIMENSIONS AND WEIGHT

137 x 152.5 x 1 cm each piece  
54 x 60 x 0,4" each piece  
76 kg / 168 lbs

## PACKAGING INFORMATION

161 x 145 x 37 (h) cm  
64 x 57 x 15 (h) "  
160 Kg / 353 lbs



## Verso Cue Rack

Design by IMPATIA R&D  
Low-iron glass, Made in Italy

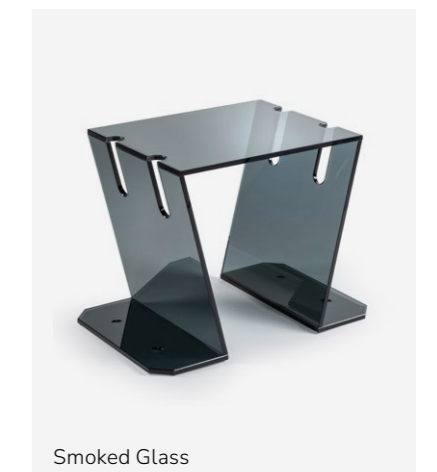
## DIMENSIONS AND WEIGHT

60 x 40 x 45 (h) cm  
24 x 16 x 18 (h) "  
20 Kg / 44 lbs

## PACKAGING INFORMATION

72 x 52 x 67 (h) cm  
28 x 20 x 26 (h) "  
40 Kg / 88 lbs

Transparent Glass



Smoked Glass

### Scambio



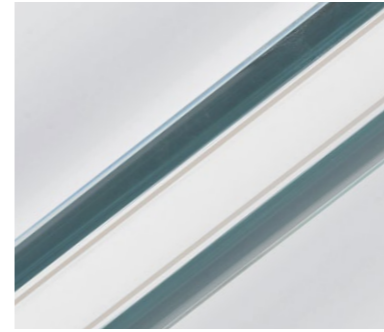
**PRODUCT INFORMATION**  
 Playing surface in Wood  
 Legs low-iron glass  
 Chrome metal components  
 Removable Leather net

**ACCESSORIES**  
 1 Removable net kit  
 4 Professional rackets  
 10 Professional balls

**PRODUCT WEIGHT**  
 217 kg / 478 lbs

**PACKAGING INFORMATION**  
 169 x 146 x 95 cm  
 66 x 57 x 37 "  
 350 kg / 772 lbs

### SELECTED GLASS



Transparent

### SELECTED WOODS



Walnut Frame and Rosewood Top

### SELECTED LEATHER



Nero



Vino



Cielo



Wood surface



Drawers



Removable Leather Net



### Racket Set

Design by IMPATIA R&D  
 Handcrafted Black Leather  
 Made in Italy

### Lungolinea Classic



**MATERIALS**  
 Low-iron glass  
 Polished metal components  
 Chrome connecting joints  
 Alcantara® net

**ACCESSORIES**  
 1 Table tennis net kit  
 4 Professional rackets  
 10 Professional balls

**PRODUCT WEIGHT**  
 220 Kg / 485 lbs

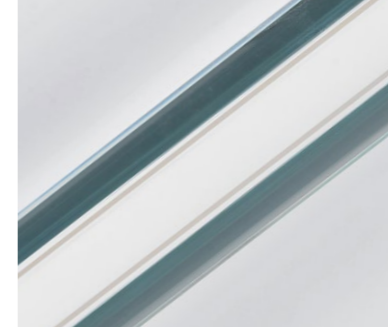
**PACKAGING INFORMATION**  
 204 x 151 x 40 (h) cm  
 80 x 59 x 16 (h) "  
 340 kg / 750 lbs

#### SELECTED METAL



Chrome

#### SELECTED GLASS

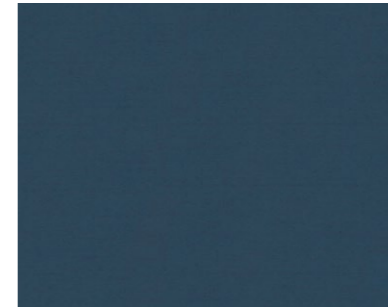


Transparent

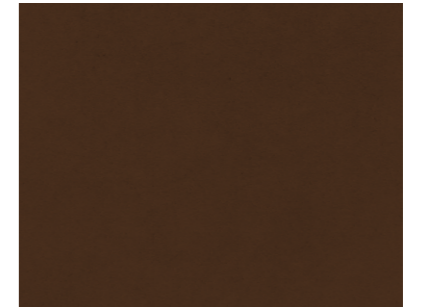
#### SELECTED ALCANTARA



Anthracite



Powder



Chestnut



Chrome metal components



Removable Alcantara net



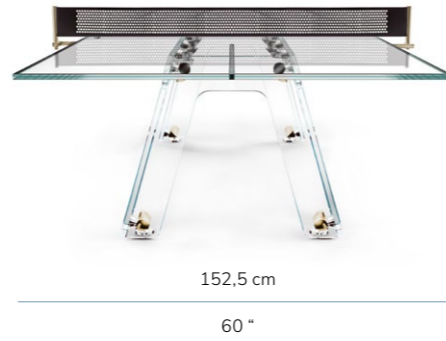
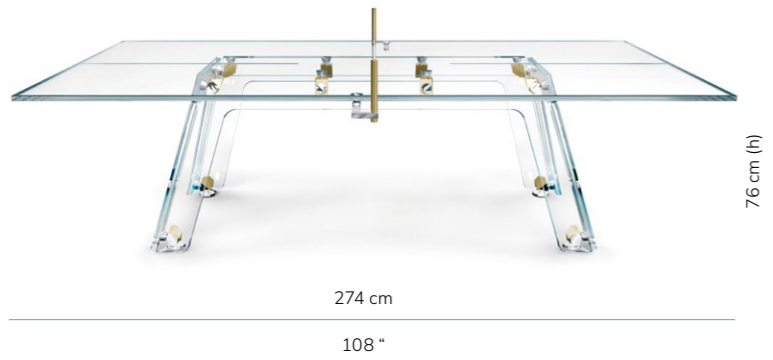
Metal components



#### Racket Set

Design by IMPATIA R&D  
 Handcrafted Black Leather  
 Made in Italy

Lungolinea Gold



**MATERIALS**  
 Low-iron glass  
 Polished metal components  
 Selected gold plated connecting joints  
 Alcantara® net

**ACCESSORIES**  
 1 Table tennis net kit  
 4 Professional rackets  
 10 Professional balls

**PRODUCT WEIGHT**  
 220 kg / 485 lbs

**PACKAGING INFORMATION**  
 204 x 151x 40 (h) cm  
 80 x 59 x 16 (h) "  
 340 kg / 750 lbs



Gold plated connecting joint



Removable Alcantara net



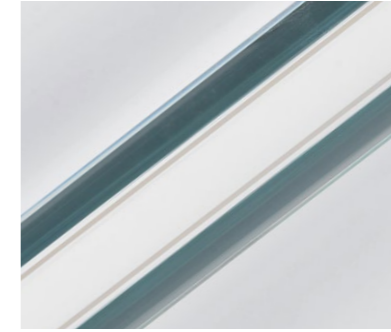
Gold plated connecting joint

SELECTED METAL



Gold

SELECTED GLASS

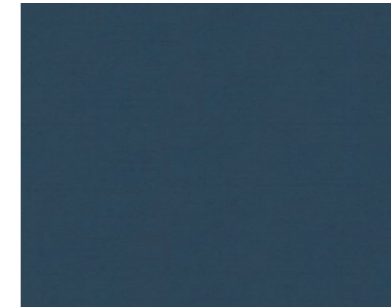


Transparent

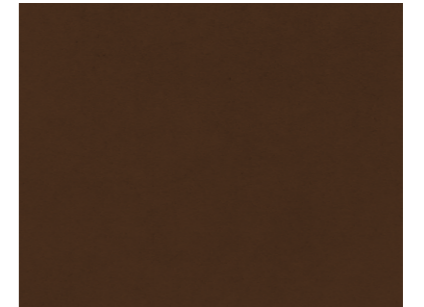
SELECTED ALCANTARA



Anthracite



Powder



Chestnut



Racket Set

Design by IMPATIA R&D  
 Handcrafted Black Leather  
 Made in Italy

Lungolinea Wood



**MATERIALS**  
 Top in Low-iron glass  
 Base in wood  
 Polished metal components  
 Chrome connecting joints  
 Alcantara® net

**ACCESSORIES**  
 1 Table tennis net kit  
 4 Professional rackets  
 10 Professional balls

**PRODUCT WEIGHT**  
 200 kg / 441 lbs

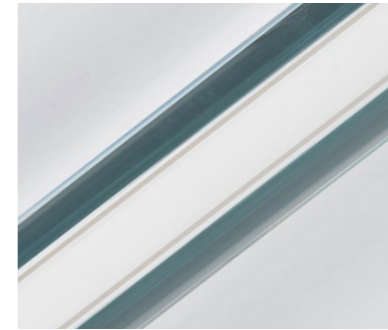
**PACKAGING INFORMATION**  
 204 x 151 x 40 (h) cm  
 80 x 59 x 16 (h) "  
 320 kg / 705 lbs

SELECTED METAL



Chrome

SELECTED GLASS

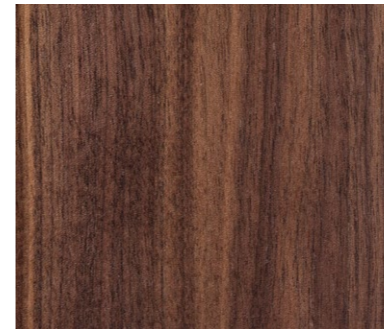


Transparent



Bronze / Smoked

SELECTED SOLID WOODS

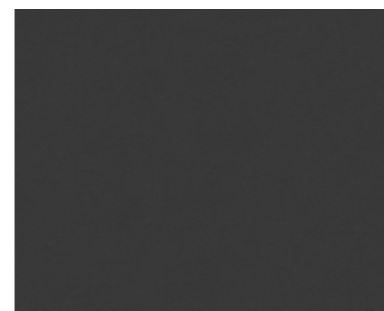


Walnut

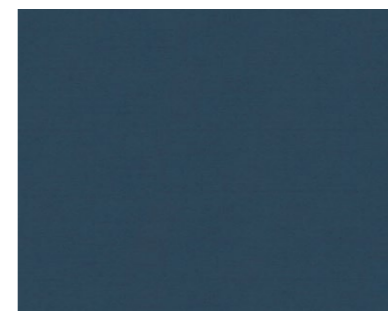


Dark Oak

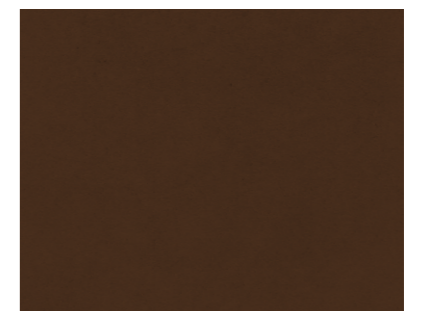
SELECTED ALCANTARA



Anthracite



Powder



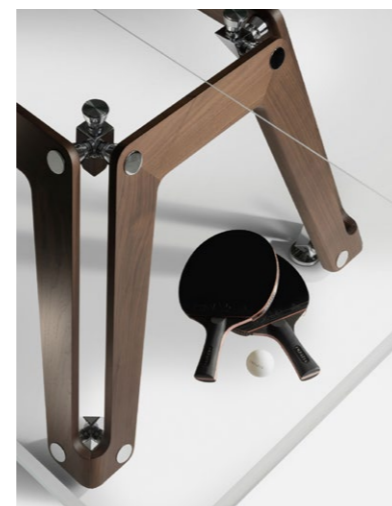
Chestnut



Chrome metal components



Removable Alcantara net



Wood base

### Lungolinea Leather



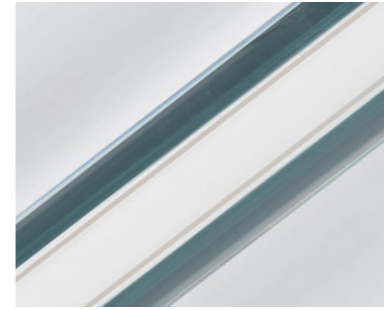
**MATERIALS**  
 Low-iron glass table top  
 Leather table base  
 Chrome metal components  
 Alcantara® net

**ACCESSORIES**  
 1 Table tennis net kit  
 4 Professional rackets  
 10 Professional balls

**PRODUCT WEIGHT**  
 200 Kg / 441 lbs

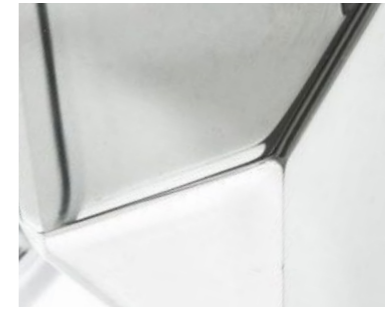
**PACKAGING INFORMATION**  
 204 x 151 x 40 (h) cm  
 80 x 59 x 16 (h) "  
 320 kg / 705 lbs

#### SELECTED GLASS



Transparent

#### SELECTED METAL



Chrome

#### SELECTED LEATHER



Nero



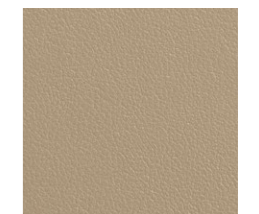
Tabacco



Vino



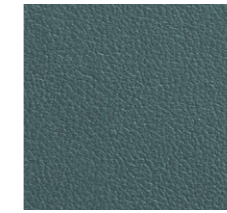
Arancio



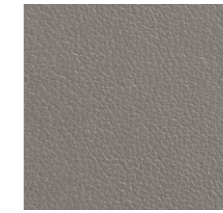
Beige



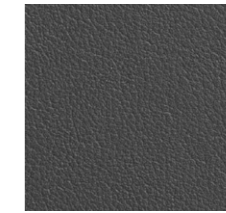
Verde



Cielo



Grigio

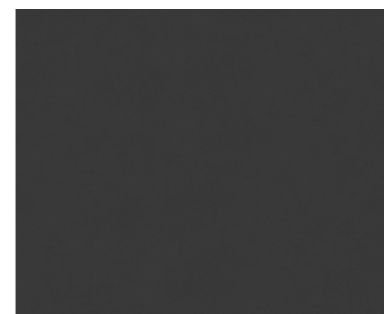


Cenere

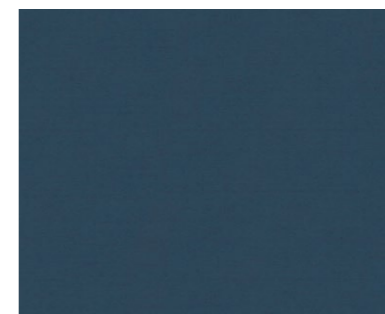


Blu

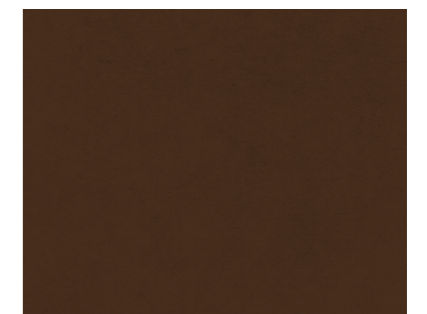
#### SELECTED ALCANTARA



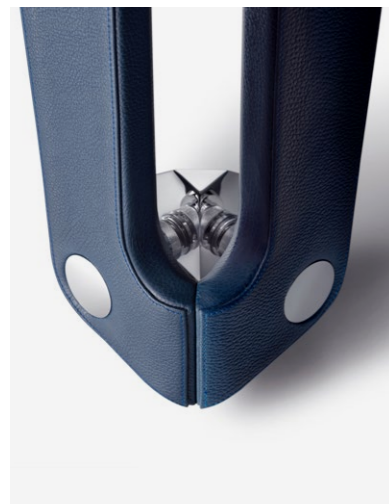
Anthracite



Powder



Chestnut



Chrome metal components



Removable Alcantara net



Leather base

Scivolo Wood  
9ft - 12ft Shuffleboard\*



**MATERIALS**  
Top in Low-iron glass  
Base in wood  
Metal components  
Alcantara® surface

**ACCESSORIES**  
8 Pucks  
Shuffleboard Powder  
Dustpan and Brush

**PRODUCT WEIGHT**  
323 kg / 712 lbs

**PACKAGING INFORMATION 12ft**  
**CRATE 1**  
144 x 96 x 76 (h) cm  
56 x 37 x 29 (h) "  
240 kg / 430 lbs

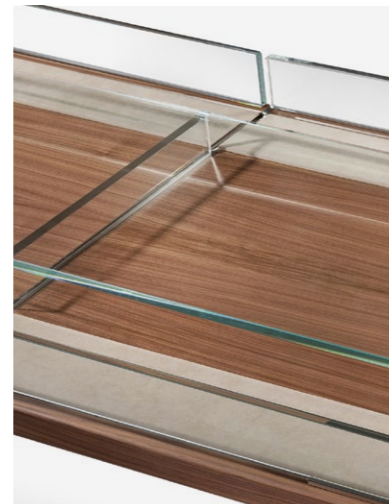
**CRATE 2**  
332 x 65 x 32 (h) cm  
130 x 25 x 12 (h) "  
230 kg / 419 lbs



Low-iron leg

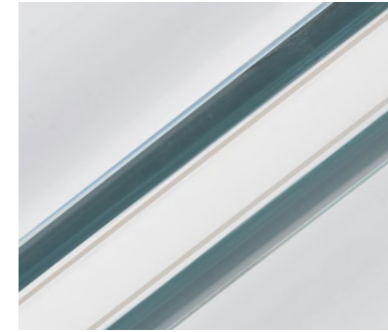


Glass Playing Surface



Wood base

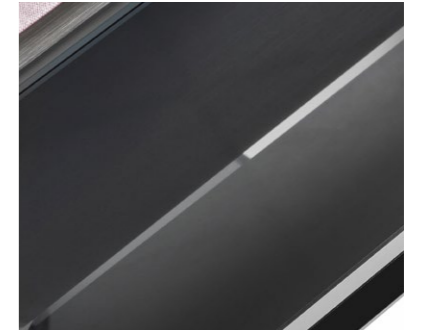
SELECTED GLASS



Transparent

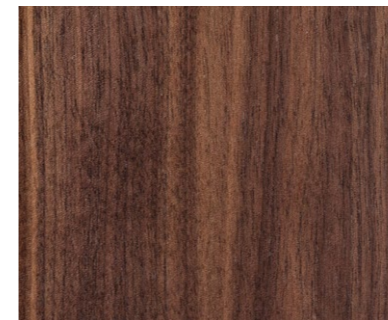


Bronze

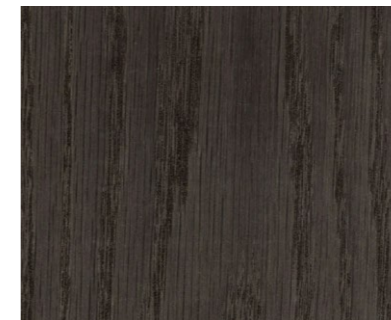


Smoked

SELECTED WOOD



Walnut



Dark Oak

SELECTED ALCANTARA



Pearl



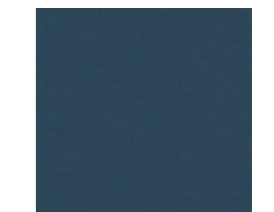
Sea Sand



Baby Grey



Lichen



Powder



Pompeian



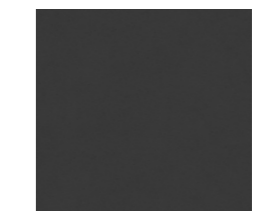
Chestnut



Terra



Steel



Anthracite

### Derby Wood



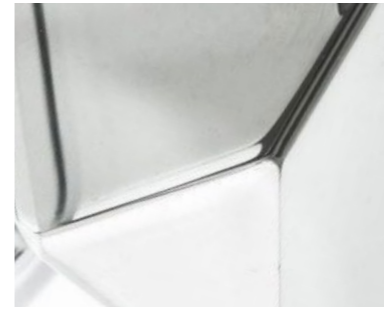
**MATERIALS**  
 Wood structure  
 Low-iron glass playing field  
 Chrome finished metal components  
 Anodised aluminum players  
 Leather goal

**ACCESSORIES**  
 3 cork balls  
 3 standard white balls

**PRODUCT WEIGHT**  
 80 kg / 176 lbs

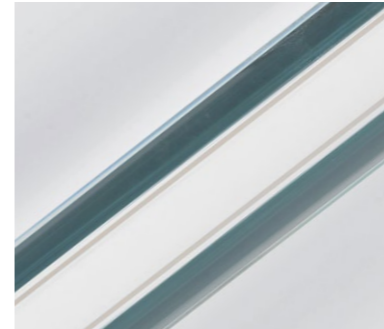
**PACKAGING INFORMATION**  
 162 x 94 x 61(h) cm  
 64 x 37 x 24 (h) "  
 160 kg / 353 Lbs

#### SELECTED METAL



Chrome

#### SELECTED GLASS



Transparent



Walnut structure and handlers

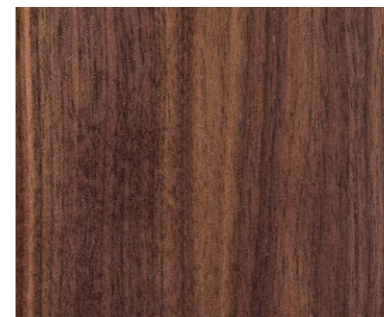


Handcrafted Leather and transparent glass

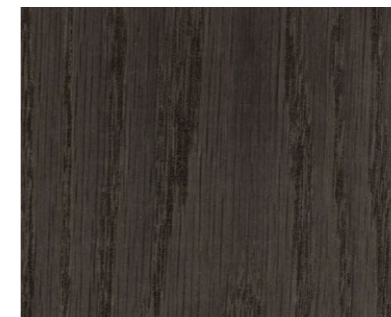


Walnut and chrome details

#### SELECTED WOOD



Walnut



Dark Oak

### Derby Dark



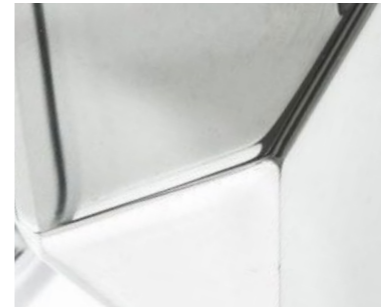
**MATERIALS**  
Wood structure  
Tinted glass playing field  
Chrome finished metal components  
Anodised aluminum players  
Leather goal p. 103

**ACCESSORIES**  
3 cork balls  
3 standard white balls

**PRODUCT WEIGHT**  
80 kg / 176 lbs

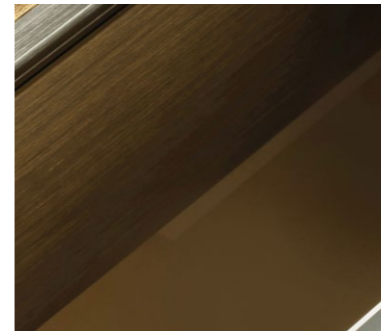
**PACKAGING INFORMATION**  
162 x 94 x 61(h) cm  
64 x 37 x 24 (h) "  
160 kg / 353 Lbs

#### SELECTED METAL

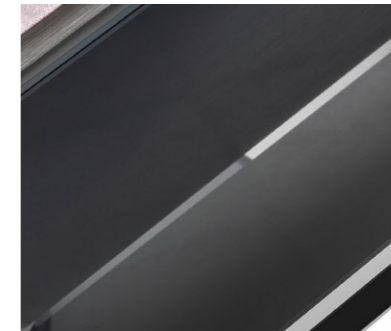


Chrome

#### SELECTED GLASS



Bronze



Smoked



Dark Oak and smoked glass

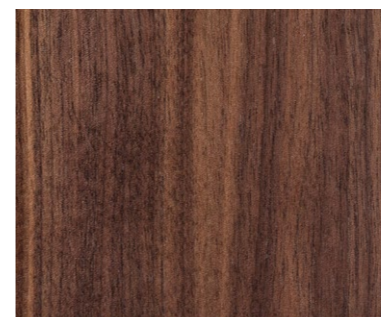


Dark Oak legs

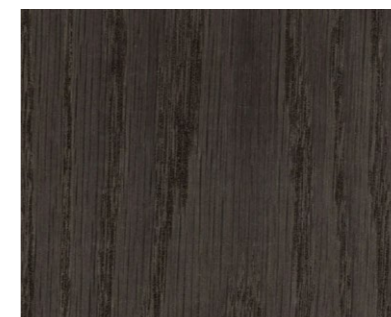


Walnut with bronze glass

#### SELECTED WOOD



Walnut



Dark Oak

### Derby Leather



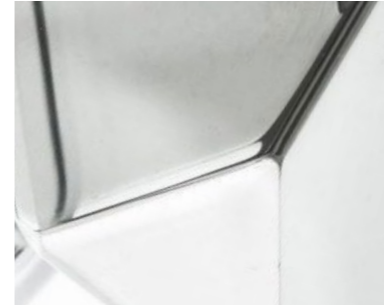
**MATERIALS**  
 Leather table frame  
 Low-iron glass playing field  
 Chrome finished metal components  
 Anodised aluminum players  
 Leather goal

**ACCESSORIES**  
 3 cork balls  
 3 standard white balls

**PRODUCT WEIGHT**  
 80 kg / 176 lbs

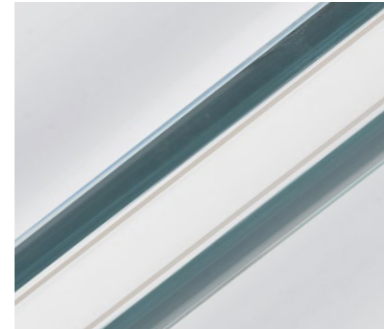
**PACKAGING INFORMATION**  
 162 x 94 x 61(h) cm  
 64 x 37 x 24 (h) "  
 160 kg / 353 Lbs

### SELECTED METAL



Chrome

### SELECTED GLASS



Transparent

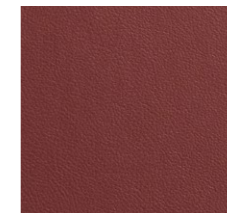
### SELECTED LEATHER



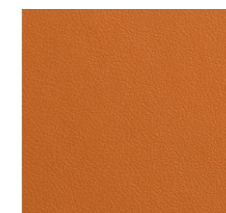
Nero



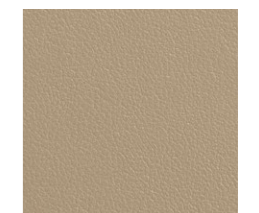
Tabacco



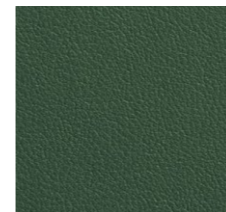
Vino



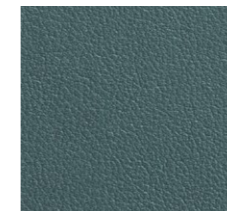
Arancio



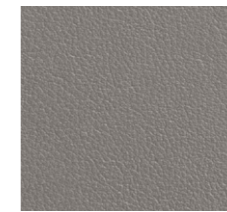
Beige



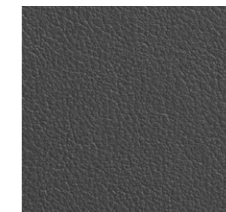
Verde



Cielo



Grigio



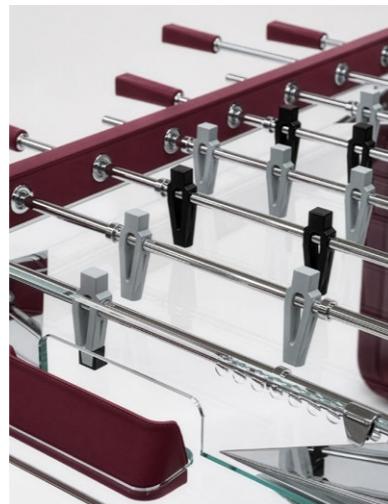
Cenere



Blu



Leather handlers



Handcrafted Leather and transparent glass



Leather and chrome details

### Derby Signature



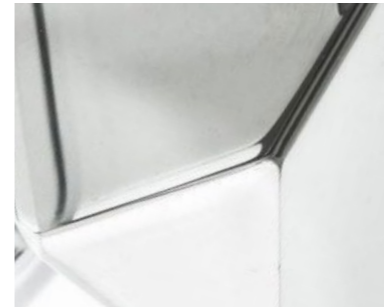
**MATERIALS**  
 Wood structure  
 Quartzite Stone  
 Chrome finished metal components  
 Anodised aluminum players  
 Leather goalers

**ACCESSORIES**  
 3 cork balls  
 3 standard white balls

**PRODUCT WEIGHT**  
 80 kg / 176 lbs

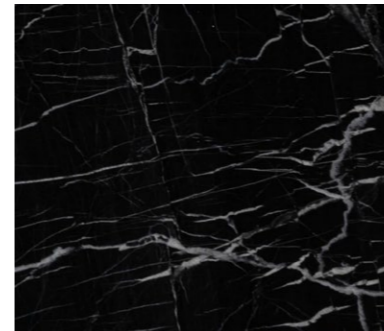
**PACKAGING INFORMATION**  
 162 x 94 x 61(h) cm  
 64 x 37 x 24 (h) "  
 160 kg / 353 Lbs

#### SELECTED METAL



Chrome

#### SELECTED STONE



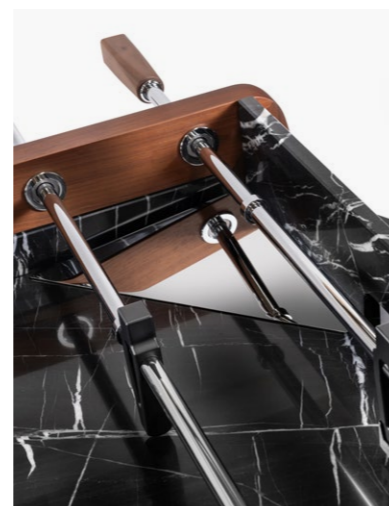
Taj Black Quartzite



Leather goal slots

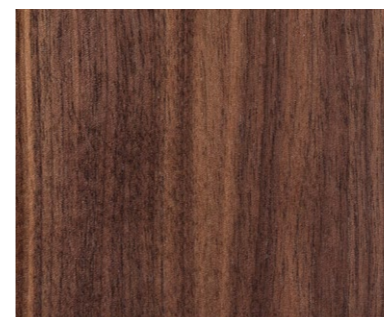


Chrome details



Walnut with Taj Black Quartzite Stone

#### SELECTED WOOD



Walnut

**Unotto Marble**  
Also available in 10 Players



**MATERIALS**  
Low-iron glass frame  
Chrome finished legs and components  
Marble top structure  
Alcantara® playing surface

**PRODUCT WEIGHT**  
110 Kg / 242,5 lbs

**PACKAGING INFORMATION**  
142 x 142 x 48 (h) cm  
60 x 60 x 18,9 (h) "  
205 kg / 452 lbs

**CUSTOMIZE OPTIONS**  
Legs material options:  
Chrome  
Black matte  
Walnut or Dark oak wood



Chrome finished metal leg

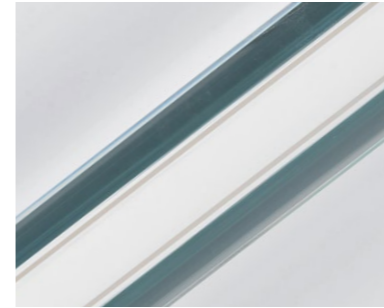


Marble frame



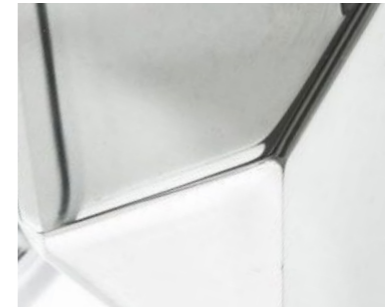
Low-iron glass frame

SELECTED GLASS



Transparent

SELECTED METAL



Chrome

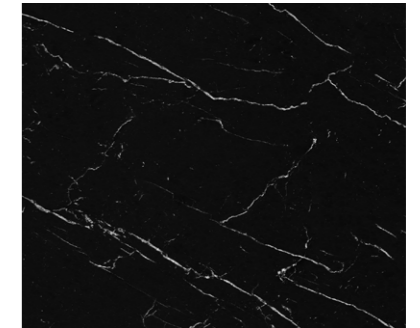
SELECTED MARBLE



Travertino



Bianco di Carrara



Marquina

SELECTED ALCANTARA



Pearl



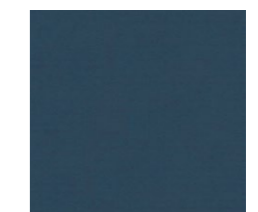
Sea Sand



Baby Grey



Lichen



Powder



Pompeian



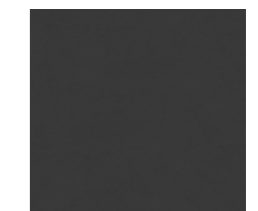
Chestnut



Terra



Steel



Anthracite

Unotto Marble - Dark Edition  
Also available in 10 Players



**MATERIALS**  
Smoked glass frame  
Selected black matte finished metal legs  
Marble top frame  
Alcantara® playing surface

**PRODUCT WEIGHT**  
110 Kg / 242,5 lbs

**PACKAGING INFORMATION**  
142 x 142 x 48 (h) cm  
60 x 60 x 18,9 (h) "  
205 kg / 452 lbs

**CUSTOMIZE OPTIONS**  
Legs material options:  
Chrome  
Black matte  
Walnut or Dark oak wood



Black matte metal finished leg



Nero Marquina marble frame

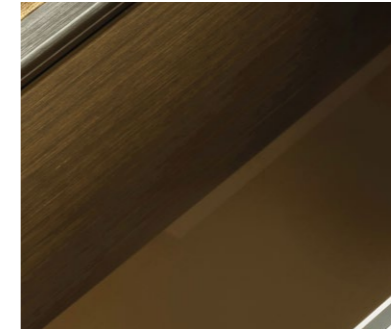


Smoked glass frame

SELECTED METAL



Matte Black



Bronze



Smoked

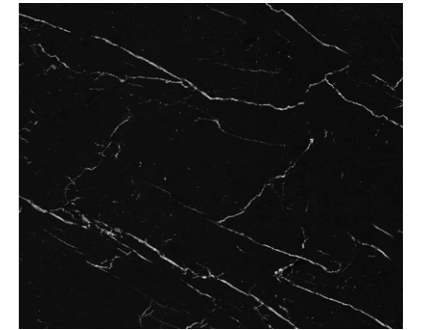
SELECTED MARBLE



Travertino



Bianco di Carrara



Nero Marquina

SELECTED ALCANTARA



Pearl



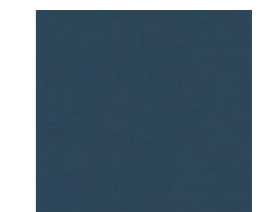
Sea Sand



Baby Grey



Lichen



Powder



Pompeian



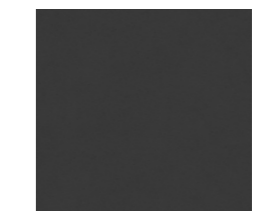
Chestnut



Terra



Steel



Anthracite

### Unotto Wood

Also available in 10 Players



**MATERIALS**  
 Low-iron glass frame  
 Wood top frame  
 Chrome finished legs and components  
 Alcantara® playing surface

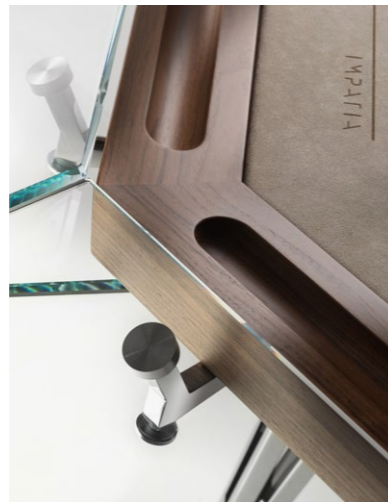
**PRODUCT WEIGHT**  
 95 kg / 209 lbs

**PACKAGING INFORMATION**  
 142 x 142 x 48 (h) cm  
 60 x 60 x 18,9 (h) "  
 205 kg / 452 lbs

**CUSTOMIZE OPTIONS**  
 Legs material options:  
 Chrome  
 Black matte  
 Walnut or Dark oak wood



Chrome finished metal leg

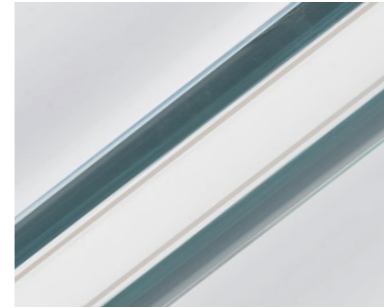


Walnut top frame



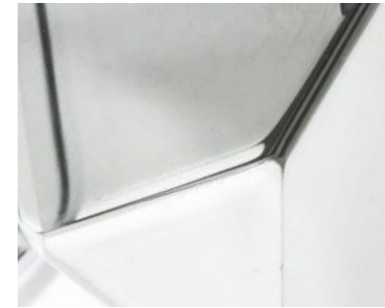
Dark oak top frame

#### SELECTED GLASS



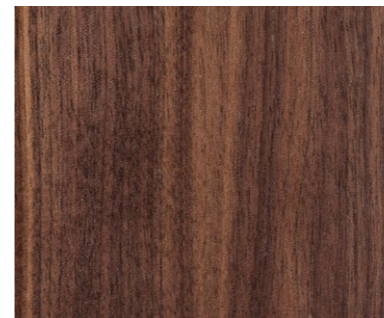
Transparent

#### SELECTED METAL

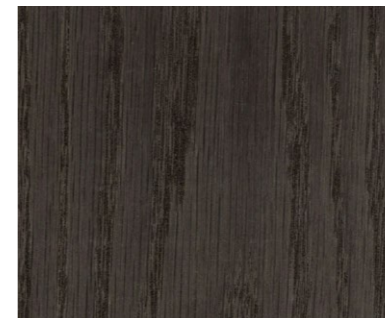


Chrome

#### SELECTED WOOD



Walnut



Dark Oak

#### SELECTED ALCANTARA



Pearl



Sea Sand



Baby Grey



Lichen



Powder



Pompeian



Chestnut



Terra



Steel



Anthracite

Unotto Wood - Dark Edition  
Also available in 10 Players



**MATERIALS**  
Glass frame  
Selected black matte finished metal legs  
Wood top frame  
Alcantara® playing surface

**PRODUCT WEIGHT**  
95 kg / 209 lbs

**PACKAGING INFORMATION**  
142 x 142 x 48 (h) cm  
60 x 60 x 18.9 (h) "  
205 kg / 452 lbs

**CUSTOMIZE OPTIONS**  
Legs material options:  
Chrome  
Black matte  
Walnut or dark oak wood



Black matte metal finished leg



Walnut frame with bronze glass



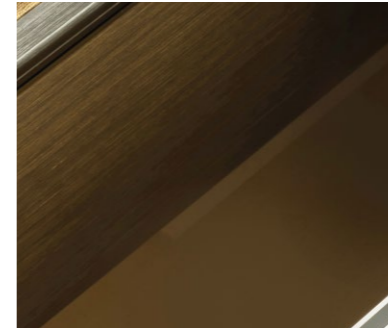
Walnut wood and chrome legs

SELECTED METAL



Matte Black

SELECTED GLASS

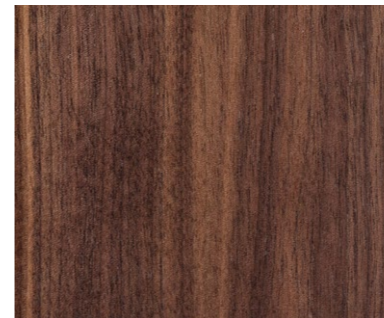


Bronze

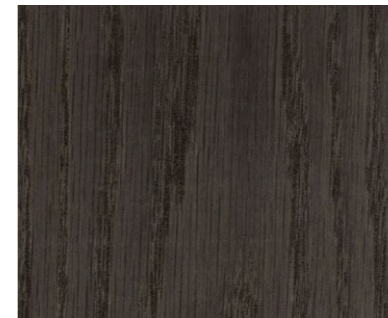


Smoked

SELECTED WOOD



Walnut



Dark Oak

SELECTED ALCANTARA



Pearl



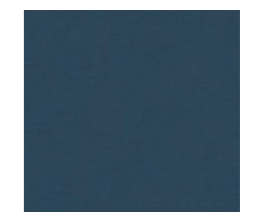
Sea Sand



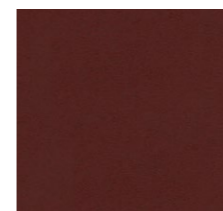
Baby Grey



Lichen



Powder



Pompeian



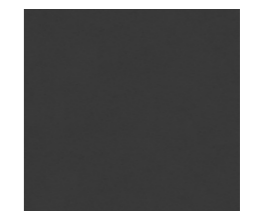
Chestnut



Terra



Steel



Anthracite

**Unotto Gold**  
Also available in 10 Players



**MATERIALS**  
Low-iron glass frame  
Selected gold plated legs and components  
Marble top structure  
Alcantara® playing surface

**PRODUCT WEIGHT**  
110 Kg / 242,5 lbs

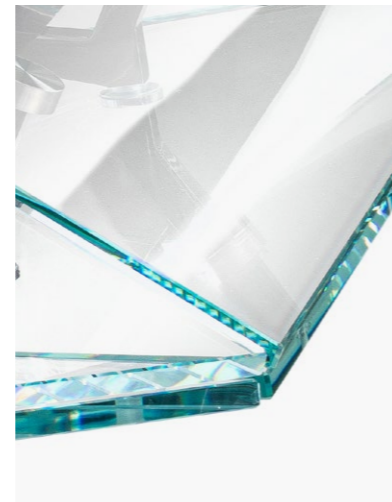
**PACKAGING INFORMATION**  
142 x 142 x 48 (h) cm  
60 x 60 x 18,9 (h) "  
205 kg / 452 lbs



Gold plated metal leg

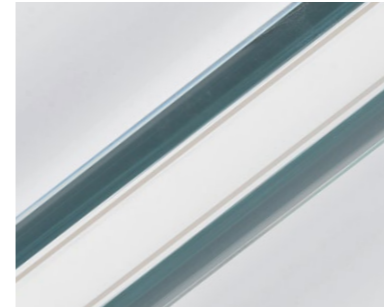


Bianco di Carrara marble frame



Low-iron glass frame

SELECTED GLASS



Transparent

SELECTED METAL



Gold

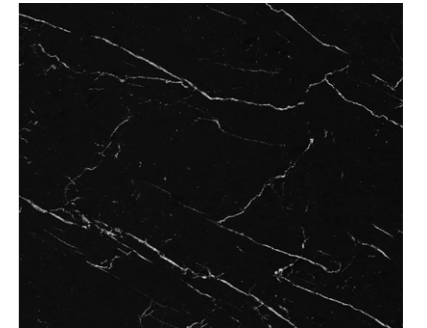
SELECTED MARBLE



Travertino



Bianco di Carrara



Nero Marquina

SELECTED ALCANTARA



Pearl



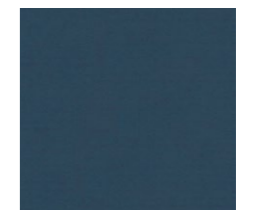
Sea Sand



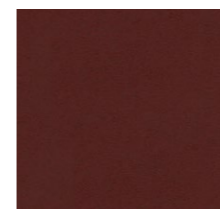
Baby Grey



Lichen



Powder



Pompeian



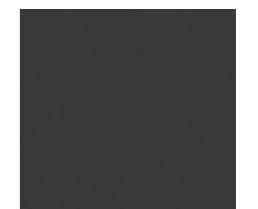
Chestnut



Terra



Steel



Anthracite

Unotto 10 Players



234 cm

92"



156 cm

61"

76 cm (h)

30"

**MARBLE EDITION MATERIALS**  
 Transparent, bronze or smoked glass  
 Chrome or black matte metal components  
 Marble top frame  
 Alcantara® playing surface

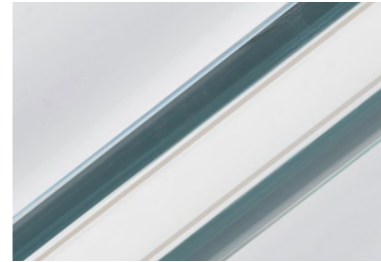
**CUSTOMIZE OPTIONS**  
 Legs material options:  
 Chrome  
 Black matte  
 Walnut or dark oak wood

**PRODUCT WEIGHT**  
 140Kg / 309lbs

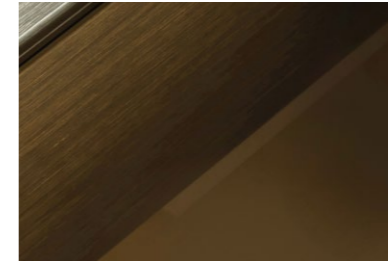
**PACKAGING INFORMATION**  
 221 x 141 x 48 (h) cm  
 87 x 55 x 19 (h)"  
 304 kg / 670 lbs

**WOOD EDITION MATERIALS**  
 Transparent, bronze or smoked glass  
 Chrome or black matte metal components  
 Wood top frame  
 Alcantara® playing surface

SELECTED GLASS



Transparent

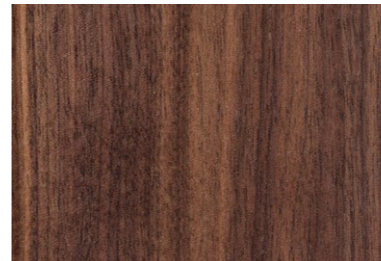


Bronze



Smoked

SELECTED WOOD



Walnut



Dark Oak

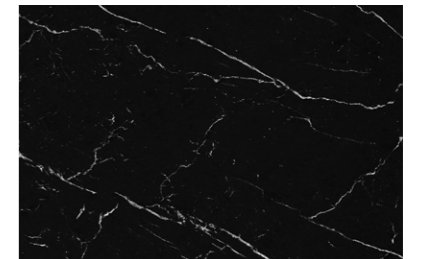
SELECTED MARBLE



Travertino



Bianco di Carrara



Nero Marquina

SELECTED ALCANTARA



Pearl



Sea Sand



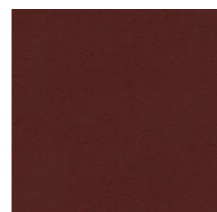
Baby Grey



Lichen



Powder



Pompeian



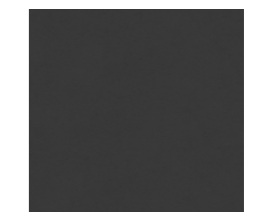
Chestnut



Terra



Steel



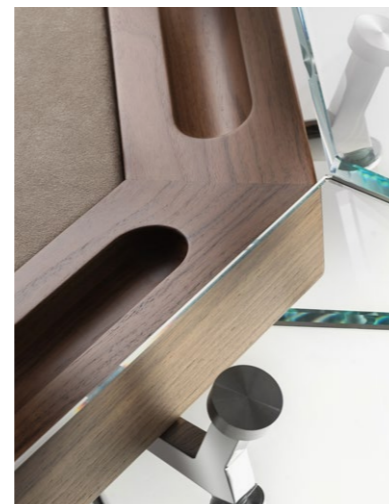
Anthracite



Chrome metal finished leg



Nero Marquina marble frame



Walnut inner top frame

## Unotto Accessories



## Poker Game Set

Design by IMPATIA R&D  
Handcrafted from leather  
10 colors available.  
Made in Italy

DIMENSIONS AND WEIGHT  
35,6 x 35,6 x 6,5 (h) cm  
14,1 x 14,1 x 2,6 (h) "  
Gross Weight: 8 kg / 17 lb



## Cup Holders

Design by Enrico Azzimonti  
Handcrafted from leather.  
10 colors available. Made in Italy

DIMENSIONS  
12 Ø x 7 (h) cm  
4.7 Ø x 2.7 (h) "  
0,8 kg / 1,76 lb



## Unotto Removable Top

FENIX custom top  
Made in Italy

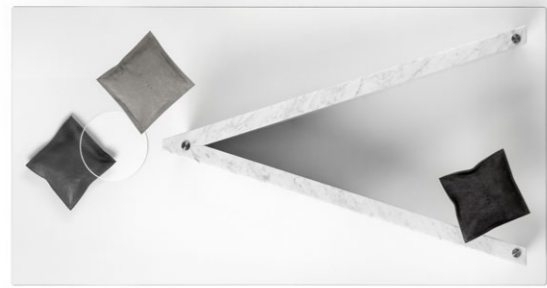
DIMENSIONS AND WEIGHT  
122 x 122 x 1 cm  
48 x 48 x 0,4 "  
18 kg / 39 lb



## Leather Armrests

Design by IMPATIA R&D  
Handcrafted from leather  
10 leather colors available  
Made in Italy

### Lancio Marble



120 cm

47"

60 cm

24"

30 cm (h)

11"



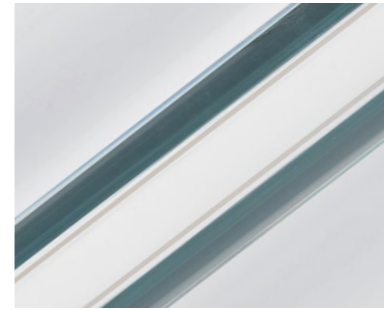
**MATERIALS**  
Low-iron glass frame  
Marble structure  
Alcantara® and leather game set

**ACCESSORIES**  
8 Alcantara® and leather Cornhole bags

**PRODUCT WEIGHT**  
47,5 kg / 105 lbs

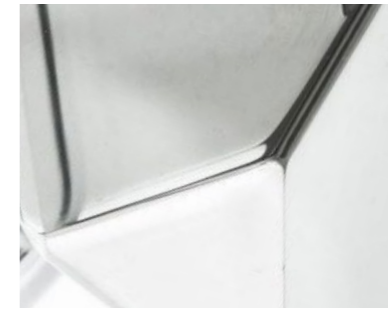
**PACKAGING INFORMATION**  
135 x 75 x 50 (h) cm  
53 x 30 x 20 (h) "  
105 kg / 231 lbs

#### SELECTED GLASS



Transparent

#### SELECTED METAL



Chrome

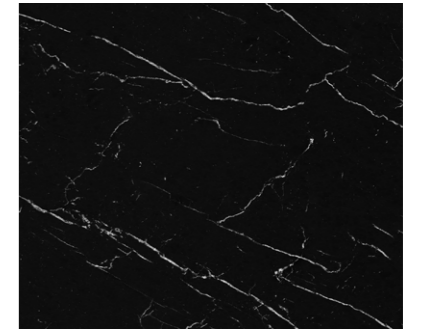
#### SELECTED MARBLE



Travertino

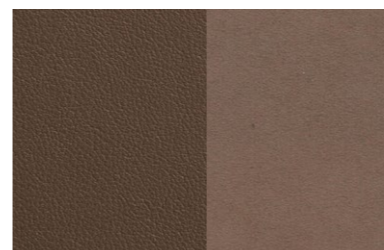


Bianco di Carrara

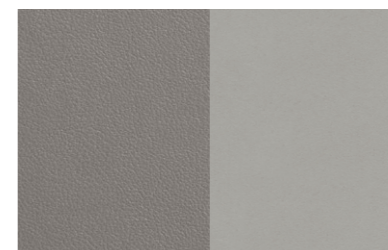


Nero Marquina

#### SELECTED GAME SET COLORS



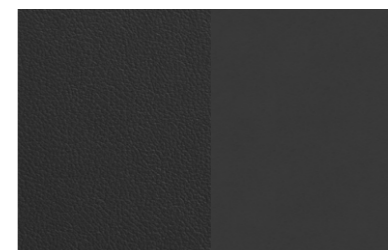
Tabacco



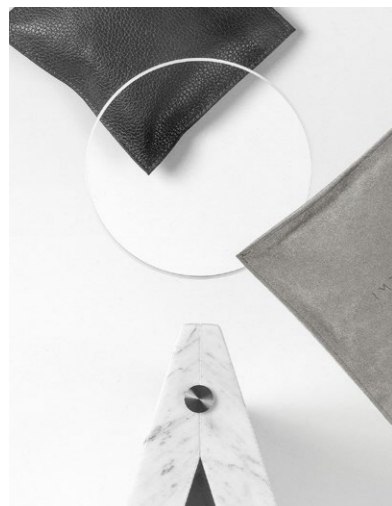
Grey



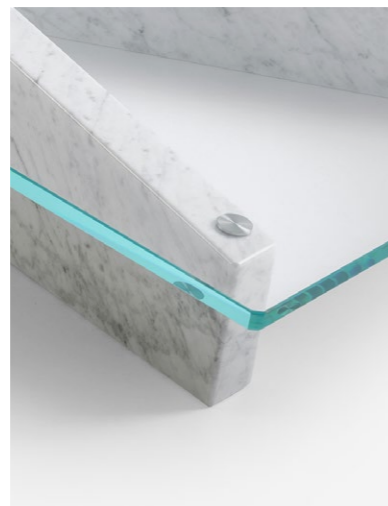
Beige



Nero



Low-iron glass

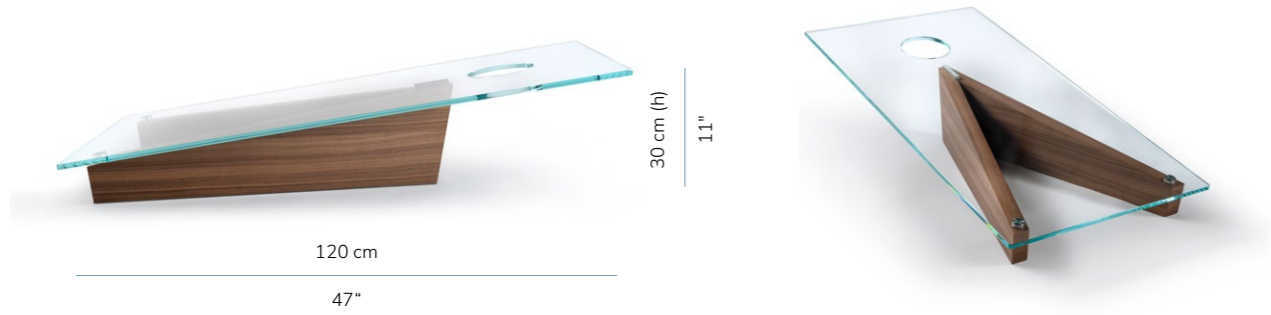


Marble structure



Alcantara® and leather game set

### Lancio Wood

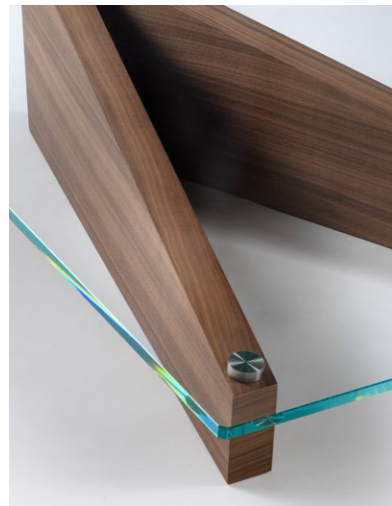


**MATERIALS**  
 Low-iron glass frame  
 Wood structure  
 Alcantara® game set

**ACCESSORIES**  
 8 Leather Cornhole bags

**PRODUCT WEIGHT**  
 33 kg / 73 lbs

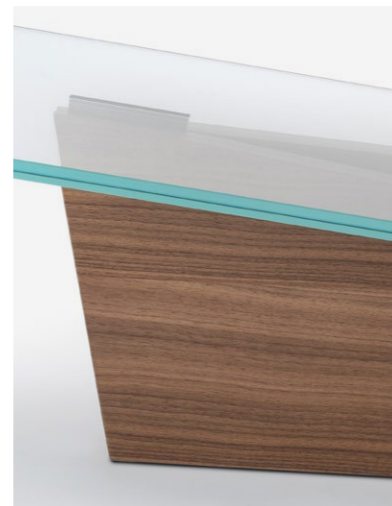
**PACKAGING INFORMATION**  
 135 x 75 x 50 (h) cm  
 51 x 28 x 19 (h) "  
 87 kg / 192 lbs



Low-iron glass

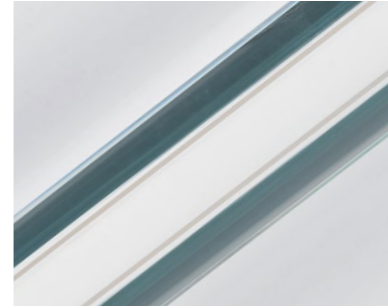


Leather and Alcantara® Game set



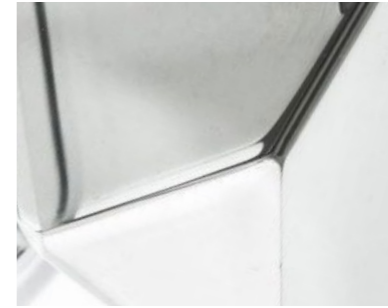
Wood Structure

### SELECTED GLASS



Transparent

### SELECTED METAL



Chrome

### SELECTED WOOD

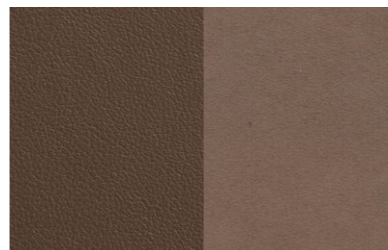


Walnut

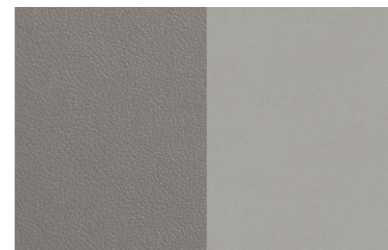


Dark Oak

### SELECTED GAME SET COLORS



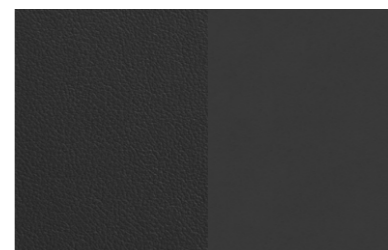
Tabacco



Grey



Beige



Nero

Mossa

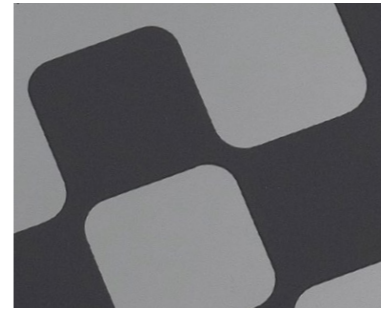


MATERIALS  
Smoked mirror and lacquered glass  
Wood structure  
Checkers in anodized aluminum  
Chess pieces in anodized aluminum  
and chrome

DIMENSIONS AND WEIGHT  
46 x 46 x 5 (h) cm  
18 x 18 x 2 (h) "  
8,5kg / 18,8 lbs

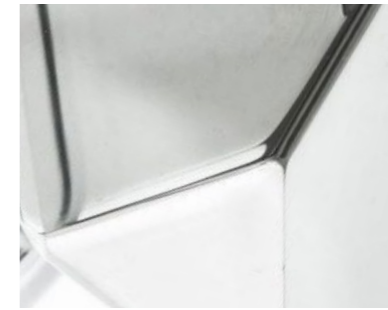
PACKAGING INFORMATION  
50 x 50 x 8 (h) cm  
19,7 x 19,7 x 3,2 (h) "  
11,5kg / 25,4 lbs

SELECTED GLASS



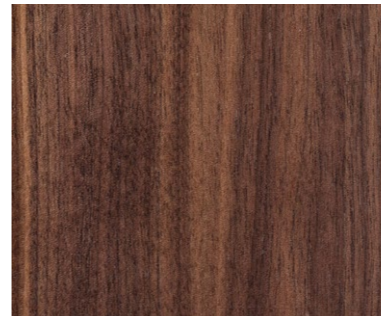
Smoked Mirror and Lacquered

SELECTED METAL



Chrome

SELECTED WOOD



Walnut



Black Lacquered Oak



Black lacquered Oak Structure



Chess Pieces



Wallnut Structure

### Tuttuno Leather



**MATERIALS**  
 Low-iron glass structure and legs  
 Chrome finished metal components  
 Leather top structure  
 Alcantara® playing field

**PACKAGING INFORMATION**  
 124 cm x 87 cm x 53 cm (h)  
 48" x 34" x 20.5" (h)  
 95 kg / 209 lbs

**SELECTED METAL**



Chrome

**PRODUCT WEIGHT**  
 35 kg / 77 lbs



### Tuttuno Dark



**MATERIALS**  
 Smoked glass structure and legs  
 Chrome finished metal components  
 Leather top structure p. 116  
 Alcantara® playing field p. 116

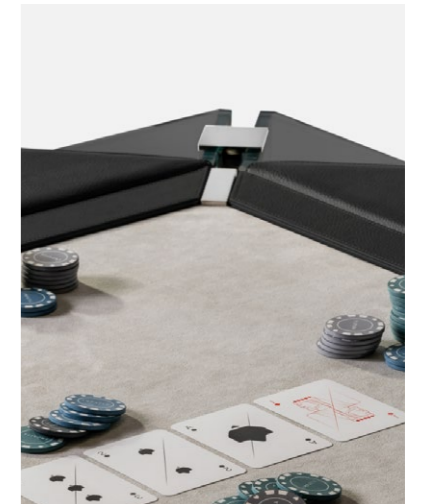
**PACKAGING INFORMATION**  
 124 cm x 87 cm x 53 cm (h)  
 48" x 34" x 20.5" (h)  
 95 kg / 209 lbs

**SELECTED METAL**



Chrome

**PRODUCT WEIGHT**  
 35 kg / 77 lbs



**Tuttuno Casinò Collection**  
Also available in 6-8-10 Players versions



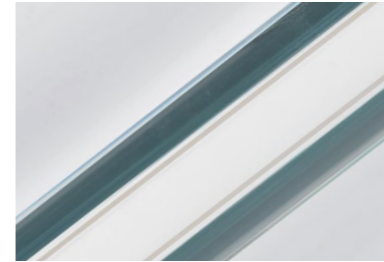
**MATERIALS**  
Low-iron glass structure and legs  
Chrome finished metal components  
Leather top structure  
Alcantara® playing field

**PACKAGING INFORMATION**  
150cm x 150cm x 53 cm (h)  
60" x 60" x 20.5" (h)  
150 kg / 330 lbs

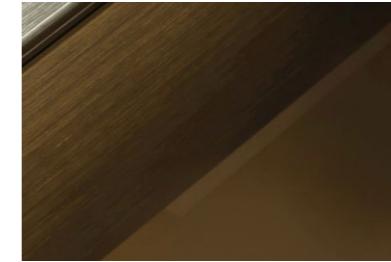
**PRODUCT WEIGHT**  
75 kg / 165 lbs



SELECTED GLASS



Transparent



Bronze



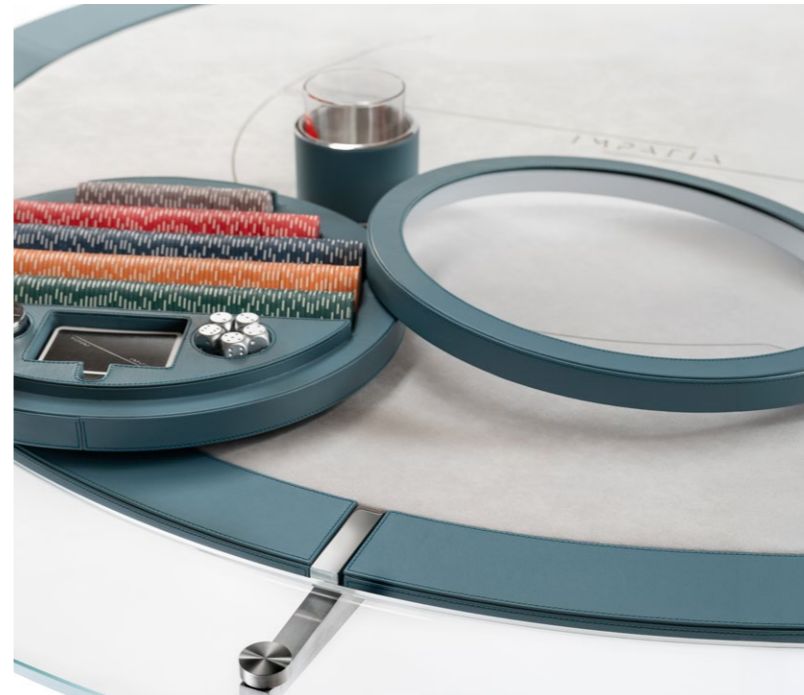
Smoked

SELECTED METAL



Chrome

TUTTUNO CASINO' COLLECTION ACCESSORIES

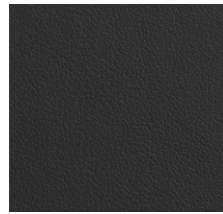


**Leather Armrests**  
Handcrafted from leather  
10 Leather colors available  
Made in Italy

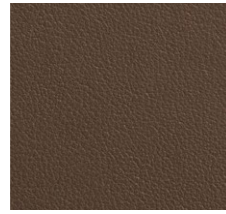
**Poker Game Set**  
Handcrafted from leather  
10 Leather colors available  
Made in Italy

**Cup Holders**  
Handcrafted from leather  
10 Leather colors available  
Made in Italy

SELECTED LEATHER



Nero



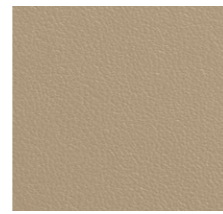
Tabacco



Vino



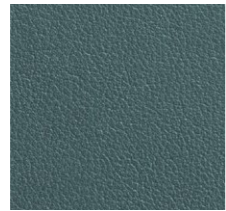
Arancio



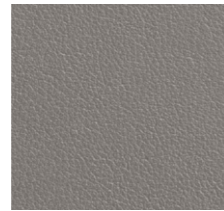
Beige



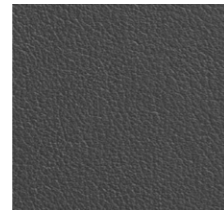
Verde



Cielo



Grigio



Cenere



Blu

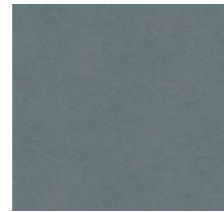
SELECTED ALCANTARA



Pearl



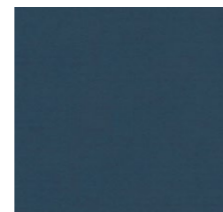
Sea Sand



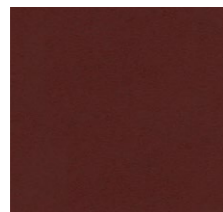
Baby Grey



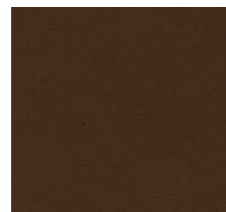
Lichen



Powder



Pompeian



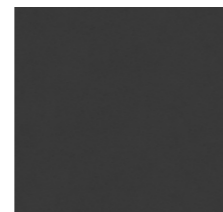
Chestnut



Terra



Steel



Anthracite

TUTTUNO ACCESSORIES



**Leather Armrests**  
Handcrafted from leather  
10 Leather colors available  
Made in Italy



**Chess and Checkers Game Set**  
Handcrafted leather box  
Chrome chess pieces and aluminium checkers  
10 Leather colors available  
Made in Italy

**DIMENSIONS**  
36 x 36 x 6 (h) cm  
14,1 x 14,1 x 2,3 (h) "

**PRODUCT WEIGHT**  
7,5 kg / 16,5 lb

**Gross Weight**  
11,5 kg / 25,3 lbs



**Backgammon Game Set**  
Handcrafted leather box with aluminium and chrome checkers  
10 Leather colors available  
Made in Italy

**DIMENSIONS AND WEIGHT**  
30,5 x 7,5 x 7,5 (h) cm  
12 x 2,9 x 2,9 (h) "  
Gross Weight: 1,5 kg / 3,3 lb

### Sospeso

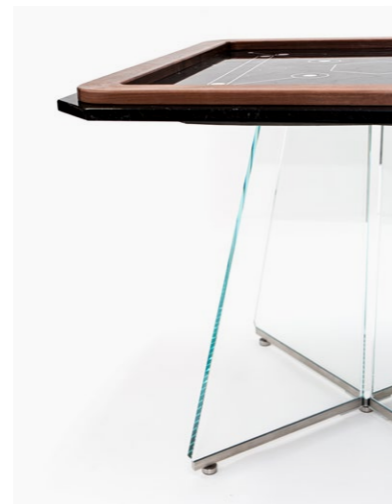
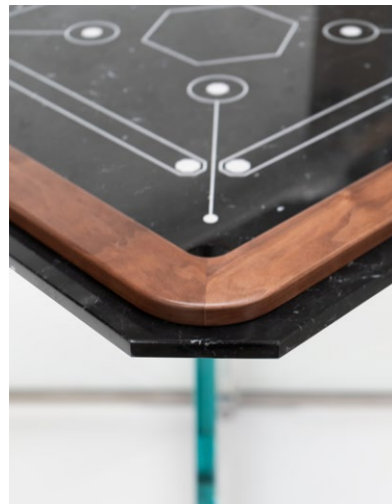


**MATERIALS**  
 Low-iron glass legs  
 Walnut wood frame  
 Nero Marquina marble playing surface

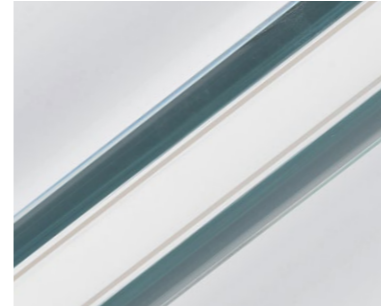
**PRODUCT WEIGHT**  
 95kg / 210 lbs

**ACCESSORIES**  
 Wood game set

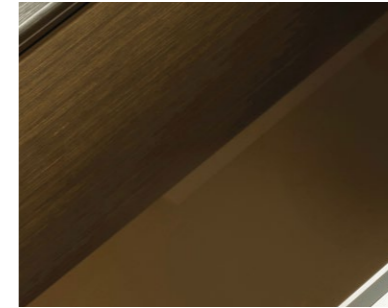
**PACKAGING INFORMATION**  
 110 cm x 110 cm x 53 cm (h)  
 43" x 43" x 20.5" (h)  
 160 kg / 352 lbs



### SELECTED GLASS



Transparent

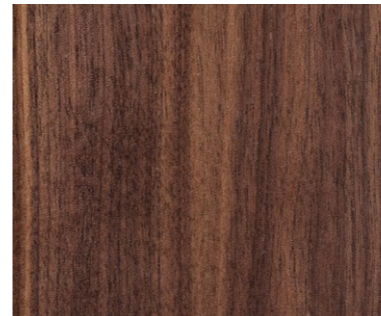


Bronze



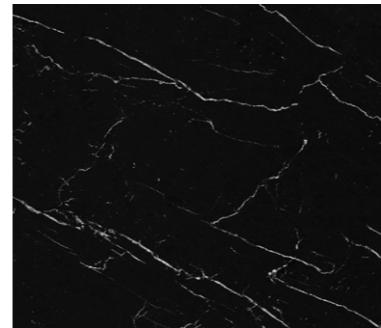
Smoked

### SELECTED WOOD



Walnut

### SELECTED MARBLE



Nero Marquina



### Billiard

Design by IMPATIA R&D  
Crocodile box with glass and metal detailing.  
Available in a range of 6 colors.  
Made in Italy

**DIMENSIONS AND WEIGHT**  
36,3 Ø x 8,5 cm  
14,3 Ø x 3.3"  
Gross Weight: 8 kg / 17 lbs



### Poker

Design by IMPATIA R&D  
Crocodile box with glass and metal detailing.  
Available in a range of 6 colors.  
Made in Italy

**DIMENSIONS AND WEIGHT**  
35,6 cm x 35,6 cm x 6,5 cm (h)  
14" x 14" x 2.5" (h)  
Gross Weight: 8kg / 17 lbs



### Cup Holder

Design by Enrico Azzimonti  
Crocodile with interior metal detailing.  
Available in a range of 6 colors.  
Made in Italy

**DIMENSIONS**  
12 cm Ø x 7 cm(h)  
4.7" Ø x 2.7" (h)



### Backgammon

Design by IMPATIA R&D  
Crocodile box with glass and metal detailing.  
Available in a range of 6 colors.  
Made in Italy

**DIMENSIONS AND WEIGHT**  
30,5 cm x 7,5 cm x 7,5 cm (h)  
12" x 2.9" x 2.9" (h)  
Gross Weight: 1.5kg / 3.3 lb

### SELECTED PRECIOUS LEATHER



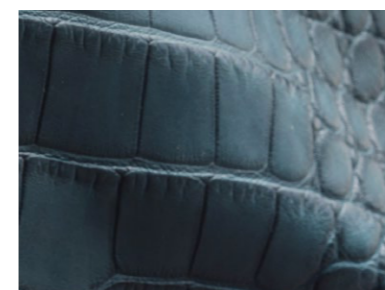
Burgundy



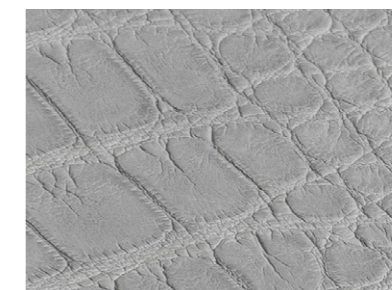
Deep Blue



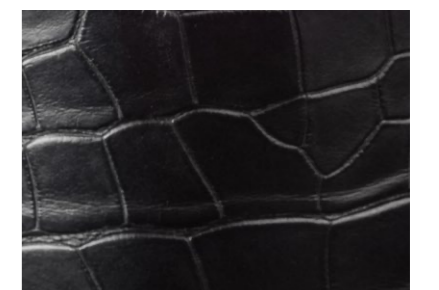
Bright Orange



Forest Green



Smoked Gray



Midnight Black

## Terms and Conditions

### BINDING EFFECTS

This document contains the terms and conditions on which Impatia srl (Busto Arsizio, 21052 Italy), ("Seller") will sell products to you ("Customer"). By submitting an order or a deposit payment for any of Seller's products, Customer agrees to be bound by these terms and conditions. Any modifications, amendments, exceptions, and/or cancellations must be agreed upon exclusively in writing and must be expressly accepted by Seller. These terms and conditions constitute an integral and essential part of the sales transaction. The placing of an order by Customer, even in the event of not being signed, or the submission of a deposit payment, constitutes 32 acknowledgment and acceptance of these general conditions. Furthermore, these terms and conditions will prevail over any other condition or agreement proposed by the Customer.

### PRICE AND PAYMENT TERMS

The price for the products being sold hereunder is set forth on the order confirmation. Payment shall be made 50% (of the total purchase price plus shipping and taxes, if applicable) upon the placing of the order by Customer, and the remaining 50% shall be due and payable on or before the estimated shipment date of the products from the manufacturer's facility in Italy. All payments shall be via ACH, wire transfer, cashier's check, or other forms of collected funds, and must be received by the Seller prior to the estimated shipping date. In the event the Customer fails to timely make any payment due hereunder, the Seller may, at its option, delay shipment of the products until payment has been made. Upon default by Customer hereunder, Customer shall be responsible for any collection costs, attorney fees, or other costs and expenses incurred by Seller in enforcing its rights hereunder. In addition, interest shall accrue on any sums due hereunder at a rate equal to 1.5% per month from its due date until paid.

### SHIPPING

All products sold hereunder FCA Olgiate Olona, shipping point (Italy), ICC Incoterms® 2020 and the cost of transportation shall be borne by Customer. The seller cannot and does not guarantee a shipping date for the products. Any shipping date supplied by Seller to Customer is solely an "estimated" shipping date and Seller shall not be responsible for any delays in shipment, including but not limited to any delays caused by strikes, labor shortage, res, floods, customs, or import inspections. All products are shipped disassembled and flat-packed in fumigated crates.

### WARRANTY

Seller warrants that the goods to be supplied hereunder will conform to the description on the face hereof; that it will convey good title thereto; that such goods will be delivered free from any lawful security interest or other lien or encumbrance unknown to customer; and that such goods will be free from defects in material and workmanship for a period of two years from the date of delivery to the Customer. There is no warranty that the goods shall be fit for any particular purpose nor is there any other warranty, express or implied, except such as is expressly set forth herein. Seller shall not be liable for any incidental or consequential damages for any breach of warranty, seller's liability, and customer's exclusive remedy being expressly limited, at seller's option, to the repair of defective goods, or the replacement thereof with conforming goods at the fca point shown on the face hereof, or the repayment of the purchase price. Replacement of defective goods or repayment of the purchase price therefor will be made only upon return of the defective goods which may be returned at the cost of seller only after inspection by seller and receipt by customer of definite shipping instructions from seller.

### ALL SALES FINAL

All sales are final, and once shipped, products are not subject to return except in accordance with the terms of the limited warranty set forth in Section 4 above. This order may be canceled by Customer within 7 days after confirmation of the order by Customer, and Seller agrees to refund to Customer any deposit or other sums paid prior to cancellation, less 10%. Any order canceled more than 7 days after confirmation of the order shall result in a forfeiture of any deposits or other sums paid by Customer prior to cancellation.

### WAIVER

No provision hereof and no breach of any provision shall be deemed waived by reason of any previous waiver of such provision or any breach thereof.

### LIMITATIONS ON LIABILITY

In no event shall Seller be liable to Customer for special, incidental, or consequential damages (including, but not limited to, loss of profits, loss of data, or loss of use damages) arising out of the manufacture, sale, or supply of the products. All products are made for indoor use.

NO RIGHTS CAN DERIVE FROM THE IMAGES. IMPATIA RESERVES THE RIGHT TO MODIFY THE MODELS, AND THE COLORS WITHOUT ANY OBLIGATION TO MODIFY THE PRODUCTS ALREADY ON THE MARKET. COLORS ARE INDICATIVE.

