



IMPAZIA



*Tonino Lamborghini*  
TOTAL LIVING



GAME COLLECTION



## A Symphony of Italian Excellence

In the sphere of Italian artistry and innovation, few names resonate with the distinction of Tonino Lamborghini and Impatia. United by a shared philosophy of transcending boundaries, this extraordinary collaboration fuses the bold spirit of Lamborghini's iconic design legacy with Impatia's mastery of crafting unparalleled game tables. Together, these two world-renowned brands unveil a collection that redefines the essence of luxury leisure.

At the heart of this partnership lies an unwavering commitment to authenticity and precision—hallmarks of Italian craftsmanship. Each piece is an exquisite balance of form and function, where sleek aesthetics meet unparalleled performance. The collection is not merely a celebration of design but an invitation to indulge in a lifestyle of bold elegance and refined play.

Drawing from Tonino Lamborghini's iconic motifs and Impatia's innovative approach to reinvention, this collection embodies a harmonious blend of tradition and modernity. Every detail, from the precision-engineered components to the carefully selected materials, has been meticulously curated to honor the legacy of both brands while pushing the boundaries of possibility.

This collaboration is more than a meeting of minds; it is a testament to Italy's enduring legacy as a global design powerhouse. The Impatia x Tonino Lamborghini game table collection stands as a symbol of boldness, creativity, and the timeless pursuit of excellence. Welcome to a world where passion meets precision, and where every game becomes a masterpiece.

IMPATIA



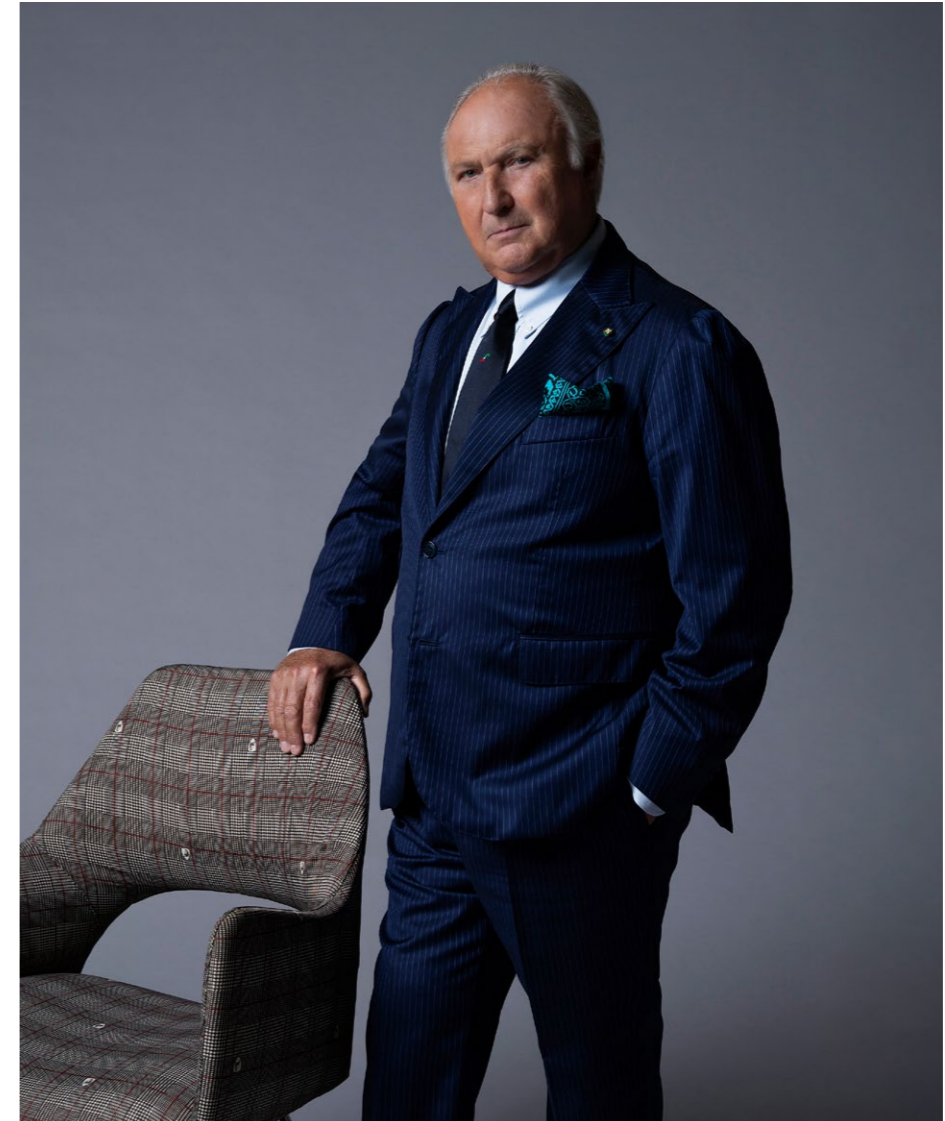
# TONINO LAMBORGHINI

## ENDURING EXCELLENCE

Entrepreneur acumen, visionary ambition and persistence: this is how Tonino Lamborghini has crafted one of the widest and most recognizable lifestyle experience brand of all times.

Each chapter of our story resonates with Tonino Lamborghini's bold vision and creativity: for more than 40 years, the consistent search for excellence has been a tribute to the grandeur of Italian spirit, becoming synonym with elegance and distinction.

Following his intuition, Tonino Lamborghini has interpreted and in some cases predicted the evolution of trends and markets alike, thus allowing the heritage to continue its unstoppable run on the global scene – becoming an international symbol of pure Italian style around the world.



## Game Tables

POOL TABLE Filotto	8
SHUFFLEBOARD TABLE Scivolo	16
PING PONG TABLE Lungolinea	20
FOOSBALL TABLE Derby	30
CARD GAME Unootto	34

## Accessories

GAME SETS	42
CUE STICKS AND RACKS	44

Technical Informations	46
------------------------	----

Terms and Conditions	52
----------------------	----

# POOL TABLE FILOTTO



## POOL TABLE FILOTTO

The Filotto pool table is reborn in the Tonino Lamborghini edition, captures the brand's dynamic essence with a striking vivid red finish—a hallmark of Tonino Lamborghini's bold identity. This remarkable piece is further distinguished by Tonino Lamborghini logo, seamlessly integrated as a signature of excellence. Fusing sleek transparency with precision craftsmanship, the Filotto becomes a statement of unparalleled design and vibrant performance.

Design by Adriano Design

### DIMENSIONS

268 x 152 x 82 (h) cm  
105,5 x 60 x 32 (h) "

### MATERIALS

Structure in low-iron glass  
Metal components  
Three-piece Italian slate  
Simonis wool cloth  
Leather pockets

### AVAILABLE ACCESSORIES

Filotto cue ball game set  
4 professional cue sticks  
Marble cue rack  
Glass cue rack

### AVAILABLE EDITIONS

Classic and Gold

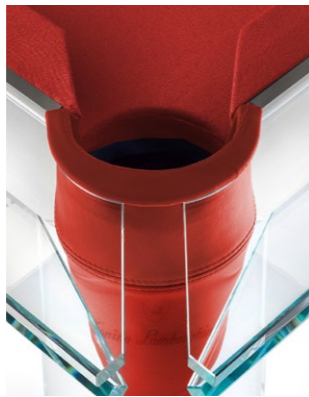
# CLASSIC EDITION



**CHROME METAL COMPONENTS**  
Connecting frame joints and legs  
Engraved product #  
High Quality  
Made in Italy



**STRUCTURE AND FRAME**  
Low iron glass  
Three-slate Surface  
Tonino Lamborghini Logo  
High Quality  
Durable  
Made in Italy



**AUTHENTICITY**  
Embroidered Logo  
High Quality  
Made in Italy



**PROFESSIONAL CLOTH**  
Simonis ®  
100% Wool  
Made in Belgium



**LEATHER POCKETS**  
Handcrafted Leather  
High Quality  
Made in Italy



# GOLD EDITION



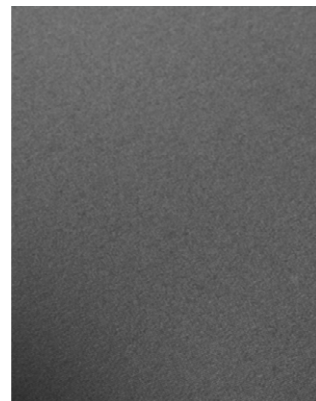
**GOLD PLATED**  
Connecting frame joints and legs  
Engraved product #  
High Quality  
Made in Italy



**STRUCTURE AND FRAME**  
Low iron glass  
Tonino Lamborghini Logo  
Three-slate Surface  
Made in Italy



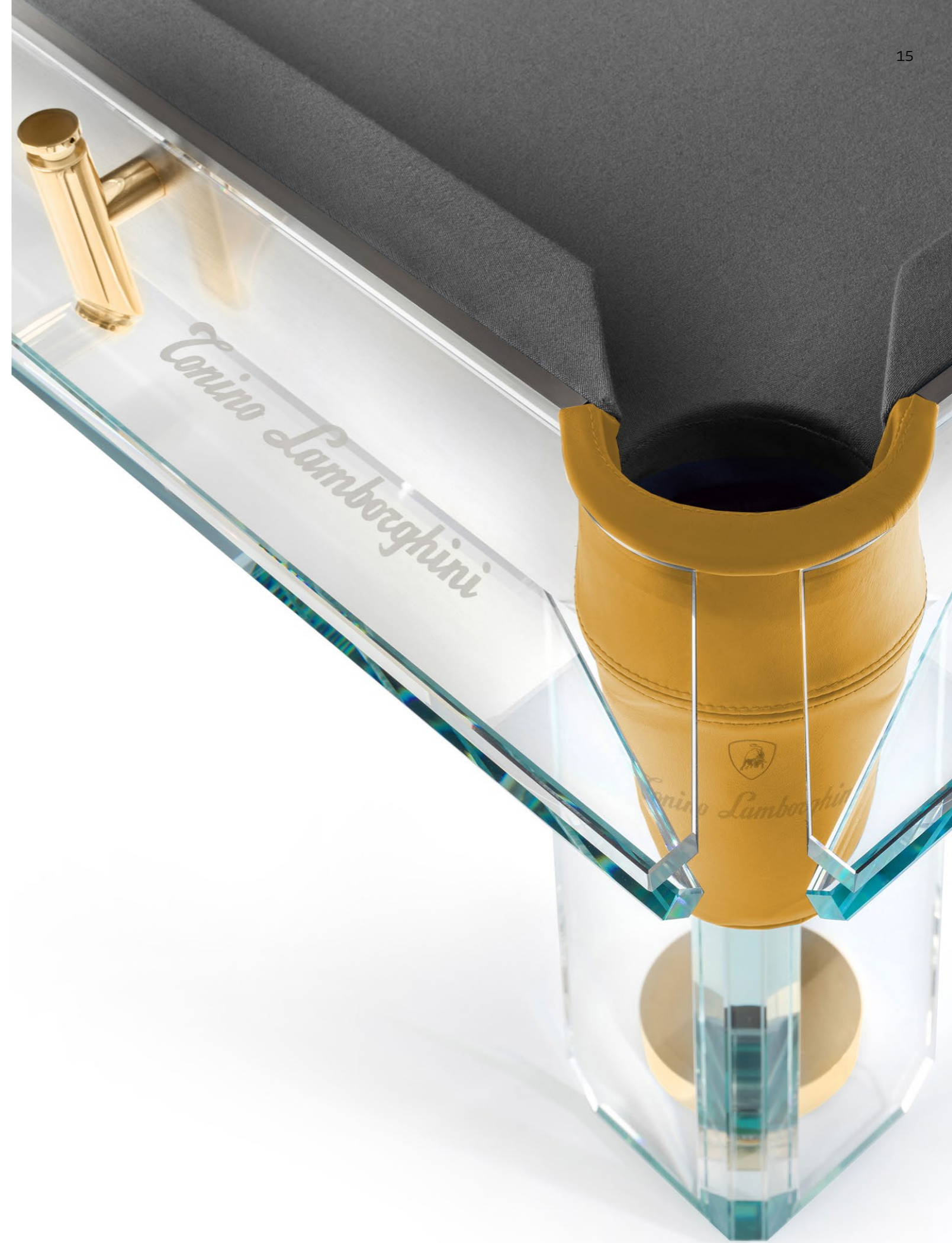
**AUTHENTICITY**  
Embroidered Logo  
High Quality  
Made in Italy



**PROFESSIONAL CLOTH**  
Simonis ®  
100% Wool  
Made in Belgium



**LEATHER POCKETS**  
Handcrafted Leather  
Tonino Lamborghini Logo  
High Quality  
Made in Italy

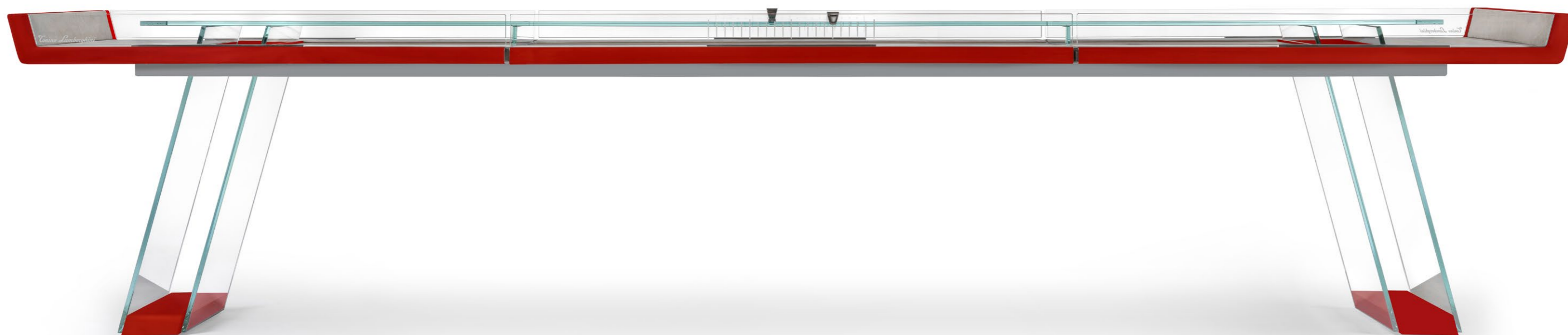


# SHUFFLEBOARD TABLE

## SCIVOLO

The modern reinterpretation of the classic shuffleboard table, a game that unites people across generations. Scivolo with Tonino Lamborghini iconic elements and character, showcases the essence of Italian craftsmanship and creativity — a true Made in Italy masterpiece.

Design by IMPATIA R&D



### DIMENSIONS 12ft

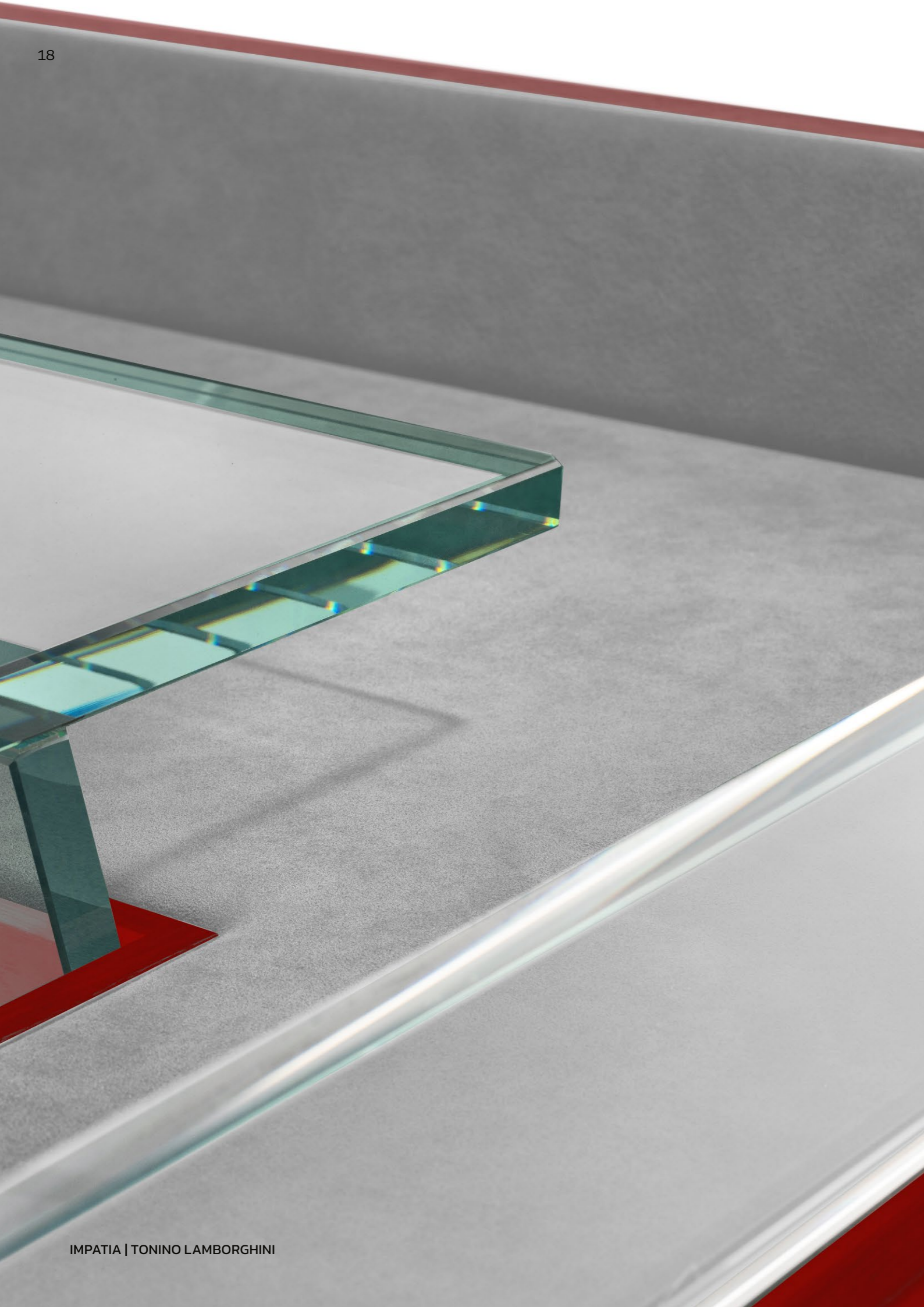
375 x 75 x 80 (h) cm  
148 x 30 x 32 (h) "

### MATERIALS

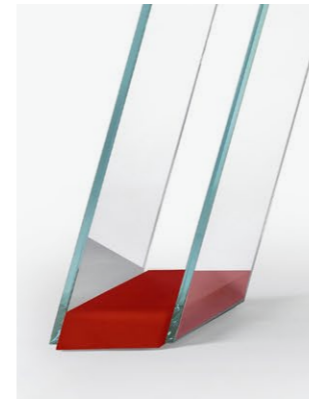
Top in low-iron glass  
Solid Lacquered wood  
Metal components  
Alcantara® surface

### ACCESSORIES

8 Pucks  
Shuffleboard Powder  
Brush  
Sand shovel



## Selected High End Materials



**PLAYING SURFACE AND LEGS STRUCTURE**  
 Low iron glass with Tonino Lamborghini Logo  
 High Quality  
 Durable  
 Made in Italy



**ALCANTARA**  
 Handcrafted in Italy  
 High Quality  
 Durable  
 Laser cut Logo  
 IMPATIA | Tonino Lamborghini



**STRUCTURE**  
 Lacquered Solid Wood  
 High Quality  
 Made in Italy

PING PONG  
LUNGOLINEA LEATHER



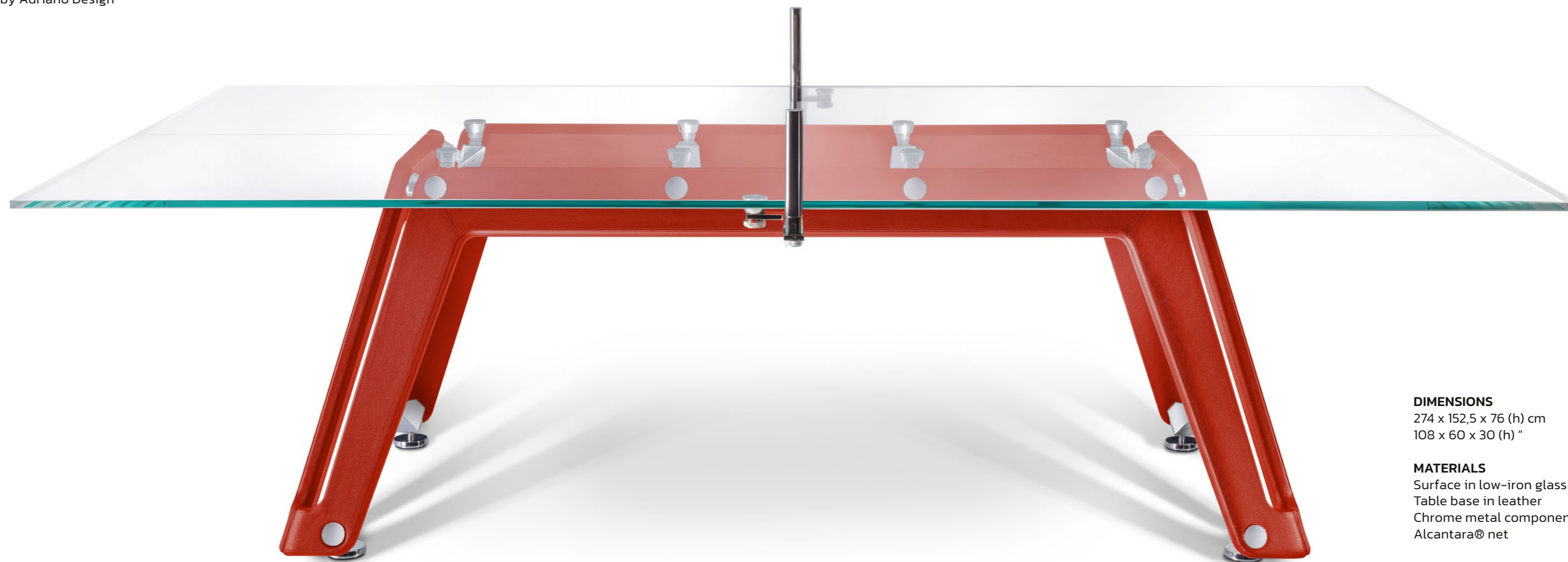
# PING PONG

## LUNGOLINEA LEATHER

The Lungolinea ping pong table ambitiously reimagines the classics, showcasing the sophistication and ingenuity of Italian design and craftsmanship. A journey of exploration defined by technical innovation, premium materials, and unparalleled aesthetic refinement.

A refined piece that embodies the excellence of Made in Italy technology, offering an unparalleled experience to the game of table tennis. Lungolinea Leather is designed to ensure high-performance playing qualities. This edition features a sophisticated leather base, chrome components, and a premium laser-cut design Alcantara net. Adding to its distinctive appeal, the table proudly showcases meticulously crafted logo details, seamlessly integrated into the design—an emblem of prestige and authenticity.

Design by Adriano Design



#### DIMENSIONS

274 x 152,5 x 76 (h) cm  
108 x 60 x 30 (h) "

#### MATERIALS

Surface in low-iron glass  
Table base in leather  
Chrome metal components  
Alcantara® net

#### INCLUDED ACCESSORIES

1 Removable net kit  
2 Professional rackets

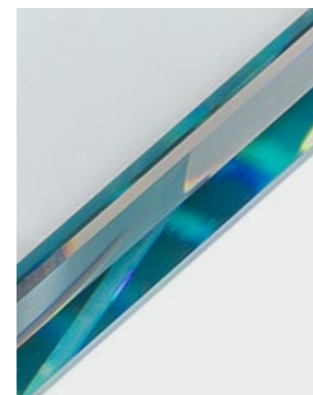
#### AVAILABLE EDITIONS

Classic and Gold

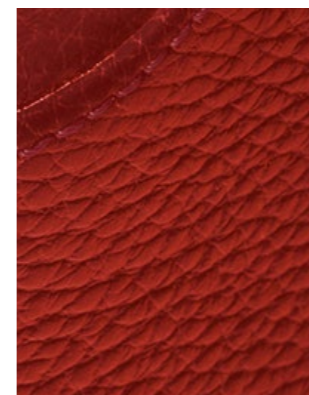




### Selected High End Materials



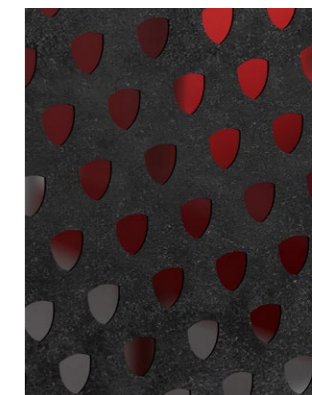
**PLAYING SURFACE**  
 Low iron Glass  
 High Quality  
 Durable  
 Made in Italy



**STRUCTURE**  
 Handcrafted Leather  
 High Quality  
 Made in Italy



**CONNECTING JOINTS**  
 Chrome Metal or Gold Plated  
 Click system  
 High Quality  
 Made in Italy



**REMOVABLE NET**  
 Alcantara ©  
 Laser cut design  
 Made in Italy

### Authentic Product



Metal Logo



Engraved logo  
 Engraved Product  
 #LN14-02TLOO0



Laser cut Logo  
 Engraved logos

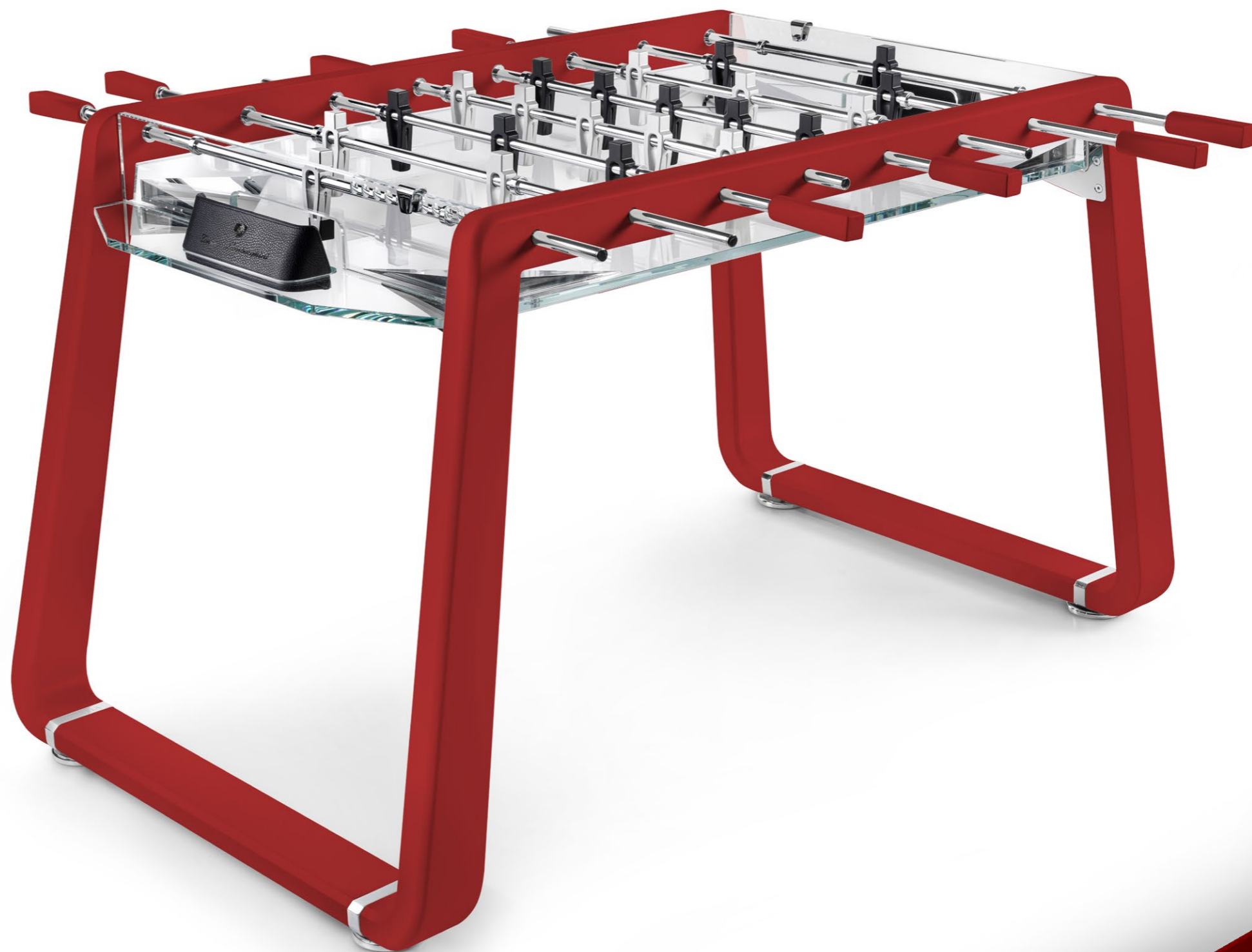


# FOOSBALL TABLE

## DERBY

Derby is a contemporary foosball table crafted from a harmonious blend of premium materials. A unique lacquered frame paired with transparent playing surfaces, chrome accents with Tonino Lamborghini statement elements, embodying a fresh take on classic leisure equipment.

Design by IMPATIA R&D



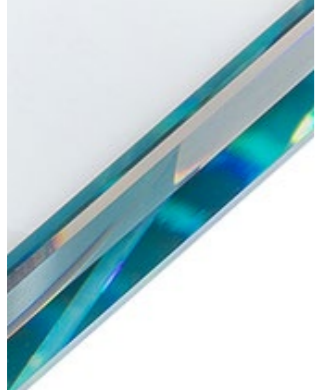
### DIMENSIONS

153 x 122 x 85,8 (h) cm  
60 x 48 x 33,8 (h)"

### MATERIALS

Lacquered Wood Structure  
Playing field in low-iron glass  
Chrome finished metal rods  
Solid lacquered Wood handles  
Aluminum players  
Leather goals

## Selected High End Materials



**PLAYING SURFACE**  
Low iron Glass  
High Quality  
Durable  
Made in Italy



**CONNECTING JOINTS**  
Chrome Metal  
High Quality  
Made in Italy



**GOALS**  
Handcrafted Leather  
Tonino Lamborghini Logo  
Made in Italy



**WOOD STRUCTURE**  
Lacquered Solid Wood  
High Quality  
Made in Italy



# CARD GAME TABLE

## UNOOTTO MARBLE

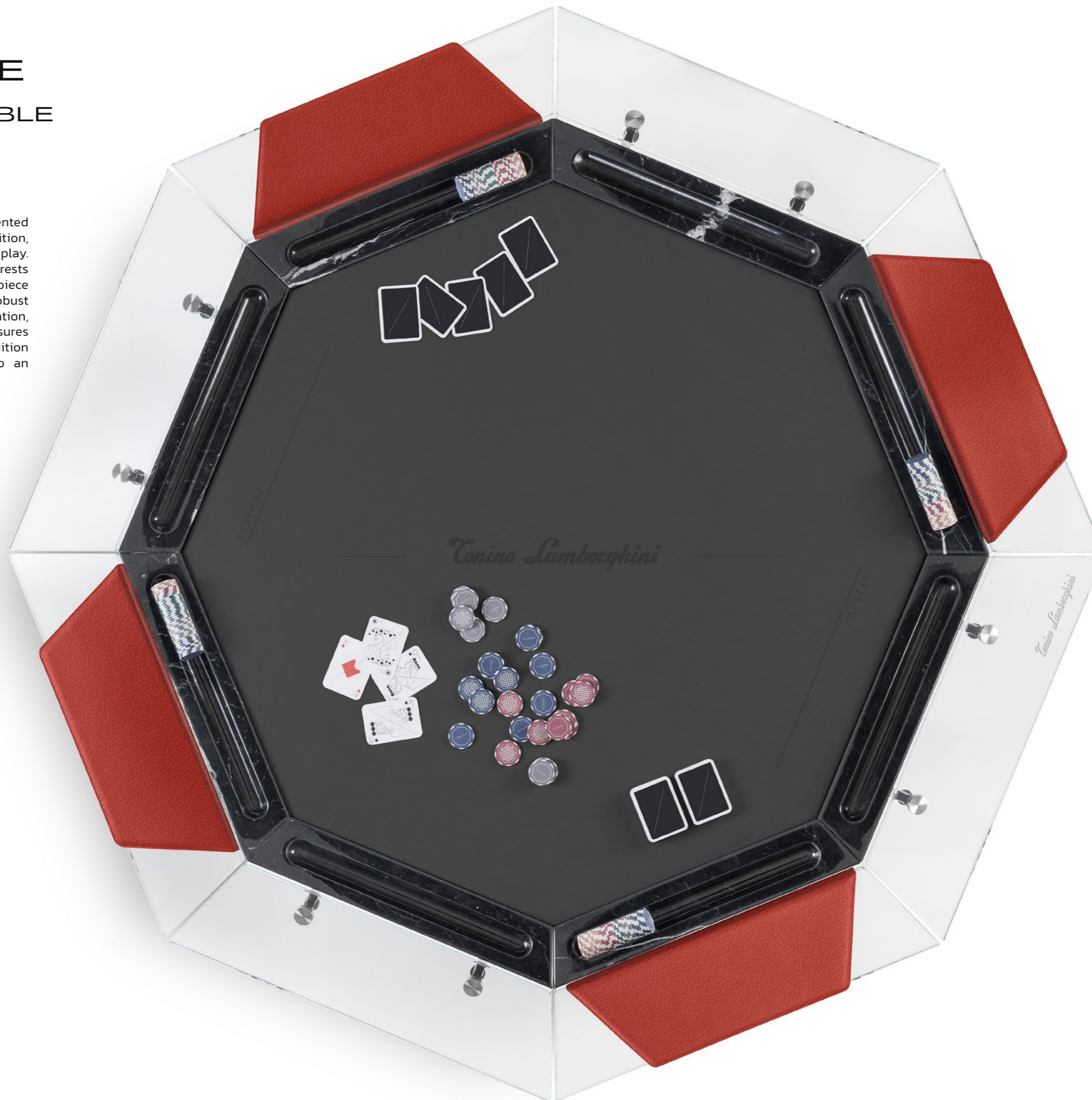


# CARD GAME

## UNOOTTO MARBLE

The Unootto card game table, now presented as Tonino Lamborghini and Impatia edition, exemplifies the fusion of luxury and play. Featuring handcrafted red leather armrests embossed with the iconic logo, this piece offers an elevated tactile experience. Its robust marble frame structure exudes sophistication, while the Alcantara playing surface ensures a smooth and refined gameplay. This edition transforms the classic card table into an emblem of Italian design excellence.

Design by Enrico Azzimonti



### DIMENSIONS

156 x 156 x 76 (h) cm  
61 x 61 x 30 (h) "  
110 Kg / 242,5 lbs

### MATERIALS

Low-iron glass frame  
Marble interior frame  
Alcantara® playing surface  
Chrome metal components  
Chrome finished metal legs

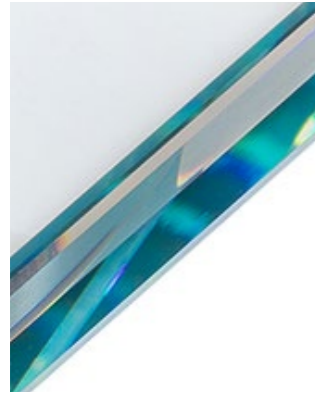
### AVAILABLE ACCESSORIES

Poker game set  
Leather armrests  
Leather cup holders

### AVAILABLE EDITIONS

Classic and Gold

## Selected High End Materials



**GLASS FRAME**  
 Low iron Glass  
 Tonino Lamborghini Logo  
 High Quality  
 Durable  
 Made in Italy



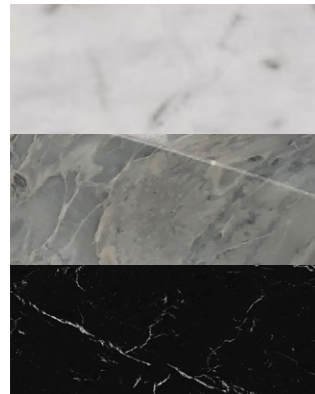
**CONNECTING JOINTS**  
 Chrome Metal  
 High Quality  
 Made in Italy



**PLAYING SURFACE**  
 Alcantara®  
 Laser cut Logo  
 Made in Italy



**ARMRESTS**  
 Handcrafted Leather  
 High Quality  
 Made in Italy



**MARBLE FRAME**  
 Bianco di Carrara,  
 Bardoglio Nuvolato,  
 Nero Marquina  
 Chips holder  
 Made in Italy



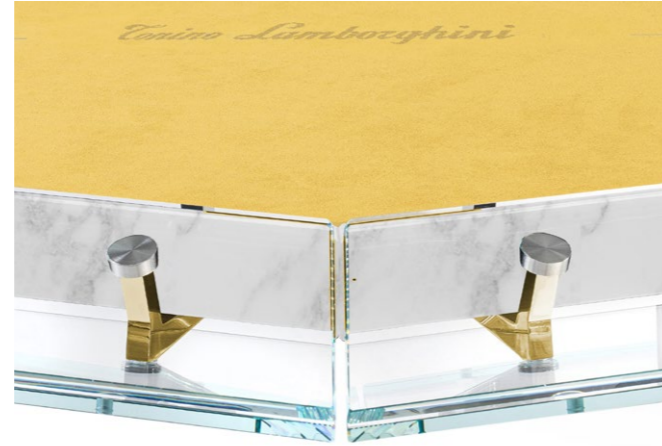
Tonino Lamborghini Logo



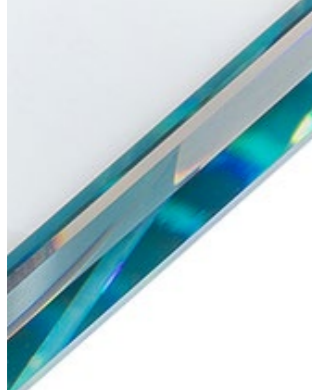
# GOLD EDITION



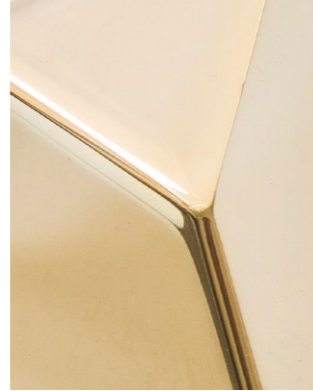
**METAL COMPONENTS**  
Connecting frame joints and legs  
High Quality  
Made in Italy



**MARBLE FRAME**  
Bianco di Carrara, Bardoglio Nuvolato, Nero Marquina  
Chips holder  
Made in Italy



**SOLID STRUCTURE**  
Low iron Glass  
Tonino Lamborghini Logo  
High Quality  
Durable  
Made in Italy



**GOLD PLATED DETAILS**  
High Quality  
Made in Italy



**PLAYING SURFACE**  
Alcantara®  
Laser cut Logo  
Made in Italy



**LEATHER ARMRESTS**  
Handcrafted Leather  
High Quality  
Made in Italy



# GAME SETS

Design by IMPATIA R&D

## BILLIARDS



### MATERIALS

Leather  
Low iron Glass with Logo  
Chrome Metal Details

### QUALITY

Handcrafted  
Made in Italy  
4 leather color options

### ACCESSORIES

1 Professional cue ball set  
1 Leather triangle rack  
Chalk Color as Billiard's cloth

### DIMENSIONS

36,3 Ø x 8,8 cm  
14,3 Ø x 3,3"  
Gross Weight: 8kg / 17 lbs

## POKER



### MATERIALS

Leather  
Low iron Glass with Logo  
Chrome Metal Details

### QUALITY

Handcrafted  
Made in Italy  
4 leather color options

### ACCESSORIES

Card Deck  
Dealer  
5 dice  
Chips set

### DIMENSIONS

35,6 x 35,6 x 6,5 (h) cm  
14 x 14 x 2,5 (h) "  
Gross Weight: 8kg / 17 lbs

# CUE STICKS AND RACK

## VERSO

Design by IMPATIA R&D

### MATERIALS

Low iron Glass

### QUALITY

Handcrafted  
Made in Italy  
Tonino Lamborghini logo

### DIMENSIONS

60 x 40 x 45 (h) cm  
24 x 16 x 18 (h)''

### WEIGHT

20 Kg / 44 lbs

### PACKAGING INFORMATION

72 x 52 x 60 (h) cm  
28 x 20 x 24 (h)''  
40 Kg / 88 lbs

## 4x CUE STICKS

### MATERIALS

Wood

### QUALITY

Handcrafted  
Made in Italy  
IMPATIA | Tonino Lamborghini Logo



## TOCCO

Design by Adriano Design

### MATERIALS

Solid Marble  
Bianco di Carrara  
Grigio Nebuloso  
Nero Marquina

### QUALITY

Handcrafted  
Made in Italy

### DIMENSIONS

28 x 28 x 28 (h) cm  
11 x 11 x 11 (h)''

### WEIGHT

36 Kg / 79 lbs

### PACKAGING INFORMATION

35 x 35 x 40 (h) cm  
14 x 14 x 16 (h)''  
40 Kg / 88 lbs



# GAME TABLE COLLECTION

## POOL TABLE FILOTTO



DIMENSIONS  
268 x 152 x 82 (h) cm  
105,5 x 60 x 32 (h) "

PRODUCT WEIGHT  
640 Kg / 1410 lbs

PACKAGING INFORMATION  
165 x 134 x 76 (h) cm  
65 x 52 x 30 (h) "  
780 Kg / 1719 lbs

SUGGESTED ROOM DIMENSION  
600 cm x 485 cm / 234" x 190"

## SHUFFLEBOARD TABLE 12 ft\* SCIVOLO \*Available in 9ft



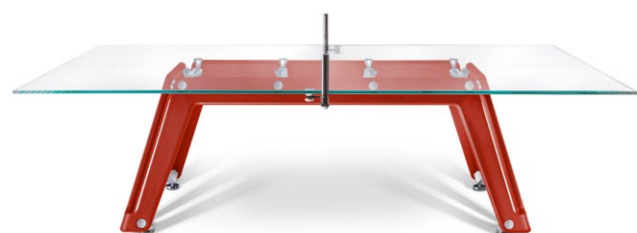
DIMENSIONS 12ft  
375 x 75 x 80 (h) cm  
148 x 30 x 32 (h) "

PRODUCT WEIGHT  
205 kg / 452 lbs

PACKAGING INFORMATION  
CRATE 1  
144 x 96 x 76 (h) cm  
56 x 37 x 29 (h) "  
240 kg / 430 lbs

CRATE 2  
332 x 65 x 32 (h) cm  
12 x 25 x 12 (h) "  
230 kg / 419 lbs

## PING PONG TABLE LUNGOLINEA



DIMENSIONS  
274 x 152,5 x 76 (h) cm  
108 x 60 x 30 (h) "

PRODUCT WEIGHT  
200 Kg / 441 lbs

PACKAGING INFORMATION  
204 cm x 151 cm x 40 (h) cm  
80 x 59 x 16 (h) "  
340 kg / 750 lbs

SET INCLUDES  
1 Table tennis net kit  
2 Professional rackets  
4 Professional balls

## FOOSBALL TABLE DERBY



DIMENSIONS  
153 x 122 x 85,8 (h) cm  
60 x 48 x 33,8 (h) "

PRODUCT WEIGHT  
80kg / 176 lbs

PACKAGING INFORMATION  
162 x 94 x 61 (h) cm  
64 x 37 x 24 (h) "  
160kg / 353 Lbs

## CARD GAME TABLE\* UNOTTO \*Available in 8 and 10 players



DIMENSIONS  
156 x 156 x 76 (h) cm  
61 x 61 x 30 (h) "

PRODUCT WEIGHT  
110 Kg / 242,5 lbs

PACKAGING INFORMATION  
142 x 142 x 40 (h) cm  
60 x 60 x 16 (h) "  
205 kg / 452 lbs

# ACCESSORIES

## BILLIARD GAME SET FILOTTO



DIMENSIONS AND WEIGHT  
36,3 Ø x 8,5 cm  
14,3" Ø x 3,3"  
Gross Weight: 8kg / 17 lbs

## POKER GAME SET UNOOTTO



DIMENSIONS AND WEIGHT  
35,6 x 35,6 x 6,5 (h) cm  
14 x 14 x 2,5 (h) "  
Gross Weight: 5kg / 11 lbs

## CARD TABLE ARMREST UNOOTTO



Handcrafted from leather  
Made in Italy

## REMOVABLE TOP\* UNOOTTO

\*Available in 8 and 10 players



FENIX Black custom top  
Made in Italy

DIMENSIONS AND WEIGHT  
122 x 122 x 1 (h) cm  
48 x 48 x 0,4 (h) "  
18 kg / 39 lb

## CUP HOLDER UNOOTTO



Handcrafted from leather  
Made in Italy

DIMENSIONS  
12 cm Ø x 7 (h) cm  
4,7 Ø x 2,7 (h) "

## VERSO CUE RACK



DIMENSIONS AND WEIGHT  
60 x 40 x 45 (h) cm  
24 x 16 x 18 (h) "  
20 Kg / 44 lbs

PACKAGING INFORMATION  
72 x 52 x 60 (h) cm  
28 x 20 x 24 (h) "  
40 Kg / 88 lbs

Cue Stick Set (4)

DIMENSIONS  
148,50 cm  
58,56"

## TOCCO CUE RACK

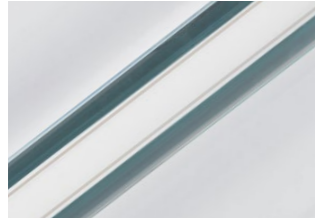


DIMENSIONS AND WEIGHT  
28 x 28 x 28 (h) cm  
11 x 11 x 11 (h) "  
36 Kg / 79 lbs

PACKAGING INFORMATION  
35 x 35 x 40 (h) cm  
14 x 14 x 16 (h) "  
40 Kg / 88 lbs  
14,3 Ø x 3,3 "

# MATERIAL OPTIONS

## SELECTED GLASS



Transparent Low Iron Glass

## SELECTED METAL



Chrome

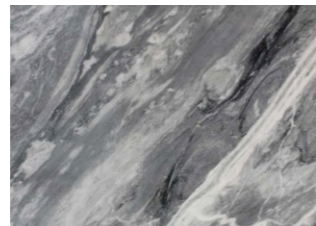


Gold

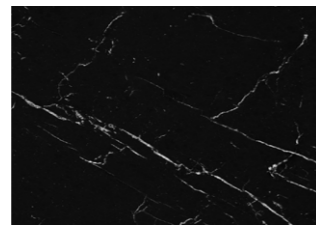
## SELECTED MARBLE



Bianco di Carrara



Bardoglio Nuvolato



Nero Marquina

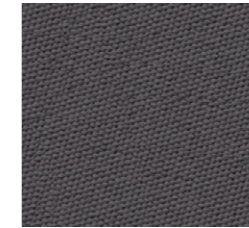
## BILLIARDS SIMONIS CLOTH



Red



Royal Blue



Slate Grey

## SIGNATURE LEATHER



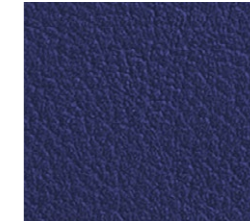
Rosso



Giallo



Verde



Blu



Nero

## SIGNATURE ALCANTARA



Pearl



Andy



Lichen



Infanta



Antrachite

## LACQUERED WOOD



Rosso



Giallo



Verde



Blu

## Terms and Conditions

### BINDING EFFECTS

This document contains the terms and conditions on which Impatia srl (Busto Arsizio, 21052 Italy), ("Seller") will sell products to you ("Customer"). By submitting an order or a deposit payment for any of Seller's products, Customer agrees to be bound by these terms and conditions. Any modifications, amendments, exceptions, and/or cancellations must be agreed upon exclusively, in writing and must be expressly accepted by Seller. These terms and conditions constitute an integral and essential part of the sales transaction. The placing of an order by Customer, even in the event of not being signed, or the submission of a deposit payment, constitutes 32 acknowledgment and acceptance of these general conditions. Furthermore, these terms and conditions will prevail over any other condition or agreement proposed by the Customer.

### PRICE AND PAYMENT TERMS

The price for the products being sold hereunder is set forth on the order confirmation. Payment shall be made 50% (of the total purchase price plus shipping and taxes, if applicable) upon the placing of the order by Customer, and the remaining 50% shall be due and payable on or before the estimated shipment date of the products from the manufacturer's facility in Italy. All payments shall be via ACH, wire transfer, cashier's check, or other forms of collected funds, and must be received by the Seller prior to the estimated shipping date. In the event the Customer fails to timely make any payment due hereunder, the Seller may, at its option, delay shipment of the products until payment has been made. Upon default by Customer hereunder, Customer shall be responsible for any collection costs, attorney fees, or other costs and expenses incurred by Seller in enforcing its rights hereunder. In addition, interest shall accrue on any sums due hereunder at a rate equal to 1.5% per month from its due date until paid.

### SHIPPING

All products sold hereunder FCA Olgate Olona, shipping point (Italy), ICC Incoterms® 2020 and the cost of transportation shall be borne by Customer. The seller cannot and does not guarantee a shipping date for the products. Any shipping date supplied by Seller to Customer is solely an "estimated" shipping date and Seller shall not be responsible for any delays in shipment, including but not limited to any delays caused by strikes, labor shortage, res, floods, customs, or import inspections. All products are shipped disassembled and flat-packed in fumigated crates.

### WARRANTY

Seller warrants that the goods to be supplied hereunder will conform to the description on the face hereof; that it will convey good title thereto; that such goods will be delivered free from any lawful security interest or other lien or encumbrance unknown to customer; and that such goods will be free from defects in material and workmanship for a period of two years from the date of delivery to the Customer. There is no warranty that the goods shall be fit for any particular purpose nor is there any other warranty, express or implied, except such as is expressly set forth herein. Seller shall not be liable for any incidental or consequential damages for any breach of warranty, seller's liability, and customer's exclusive remedy being expressly limited, at seller's option, to the repair of defective goods, or the replacement thereof with conforming goods at the fca point shown on the face hereof, or the repayment of the purchase price. Replacement of defective goods or repayment of the purchase price therefor will be made only upon return of the defective goods which may be returned at the cost of seller only after inspection by seller and receipt by customer of definite shipping instructions from seller.

### ALL SALES FINAL

All sales are final, and once shipped, products are not subject to return except in accordance with the terms of the limited warranty set forth in Section 4 above. This order may be canceled by Customer within 7 days after confirmation of the order by Customer, and Seller agrees to refund to Customer any deposit or other sums paid prior to cancellation, less 10%. Any order canceled more than 7 days after confirmation of the order shall result in a forfeiture of any deposits or other sums paid by Customer prior to cancellation.

### WAIVER

No provision hereof and no breach of any provision shall be deemed waived by reason of any previous waiver of such provision or any breach thereof.

### LIMITATIONS ON LIABILITY

In no event shall Seller be liable to Customer for special, incidental, or consequential damages (including, but not limited to, loss of profits, loss of data, or loss of use damages) arising out of the manufacture, sale, or supply of the products. All products are made for indoor use.

NO RIGHTS CAN DERIVE FROM THE IMAGES. IMPATIA RESERVES THE RIGHT TO MODIFY THE MODELS, AND THE COLORS WITHOUT ANY OBLIGATION TO MODIFY THE PRODUCTS ALREADY ON THE MARKET. COLORS ARE INDICATIVE.

IMPATIA



Manufactured under license of Tonino Lamborghini S.p.a.

ΙΜΠΑΤΙΑ



*Tonino Lamborghini*

TOTAL LIVING

[www.impatia.com](http://www.impatia.com)

[info@impatia.com](mailto:info@impatia.com)